


### Anti-TRA-1-60 (R) antibody [TRA-1-60] ab16288

★★★★★ 8 Abreviews 123 References 画像数 4

#### 製品の概要

製品名	Anti-TRA-1-60 (R) antibody [TRA-1-60]
製品の詳細	Mouse monoclonal [TRA-1-60] to TRA-1-60 (R)
由来種	Mouse
アプリケーション	適用あり: ICC, WB
種交差性	交差種: Human 交差が予測される動物種: Rabbit 
免疫原	Tissue, cells or virus corresponding to Human TRA-1-60 (R). Human embryonal carcinoma cell line 2102Ep cl.2A6.
ポジティブ・コントロール	WB: Human embryonic stem cell lysate. ICC: Human embryonic stem cells.
特記事項	<p>This antibody clone is manufactured by Abcam. If you require a custom buffer formulation or conjugation for your experiments, please contact <a href="mailto:orders@abcam.com">orders@abcam.com</a>.</p> <p>The Life Science industry has been in the grips of a reproducibility crisis for a number of years. Abcam is leading the way in addressing this with our range of recombinant monoclonal antibodies and knockout edited cell lines for gold-standard validation. Please check that this product meets your needs before purchasing.</p> <p>If you have any questions, special requirements or concerns, please send us an inquiry and/or contact our Support team ahead of purchase. Recommended alternatives for this product can be found below, along with publications, customer reviews and Q&amp;As</p>

#### 製品の特性

製品の状態	Liquid
保存方法	Shipped at 4°C. Store at +4°C short term (1-2 weeks). Upon delivery aliquot. Store at -20°C or -80°C. Avoid freeze / thaw cycle.
バッファー	pH: 7.40 Preservative: 0.02% Sodium azide Constituents: PBS, 6.97% L-Arginine
精製度	Tissue culture supernatant
特記事項 (精製)	Tissue culture supernatant was cross flow concentrated and buffer exchanged to PBS
ポリ/モノ	モノクローナル

クローン名	TRA-1-60
ミエローマ	P3x66Ag.8-Sp2/0
アイソタイプ	IgM

## アプリケーション

**The Abpromise guarantee** Abpromise保証は、 次のテスト済みアプリケーションにおけるab16288の使用に適用されます  
アプリケーションノートには、推奨の開始希釈率がありますが、適切な希釈率につきましてはご検討ください。

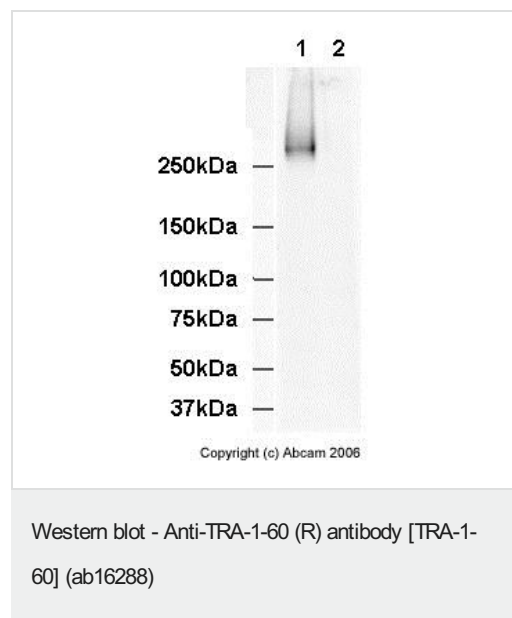
アプリケーション	Abreviews	特記事項
ICC		1/500.
WB	★★★★★ (1)	Use a concentration of 1 - 10 µg/ml. Detects a band of approximately 250 kDa (predicted molecular weight: 235 kDa).

## ターゲット情報

**関連性** TRA-1-60 is a marker of Human Embryonic Stem, Germ and Carcinoma Cells but Not Mouse Embryonic Stem, Germ or Carcinoma Cells. The TRA-1-60 target has been reported to be a carbohydrate epitope associated with podocalyxin (PubMed IDs: 10493530, 17124010).

**細胞内局在** Cell Membrane

## 画像



**All lanes :** Anti-TRA-1-60 (R) antibody [TRA-1-60] (ab16288) at 10 µg/ml

**Lane 1 :** Human Embryonic Stem Cell Lysate

**Lane 2 :** Mouse Embryonic Stem Cell Lysate

Lysates/proteins at 20 µg per lane.

### Secondary

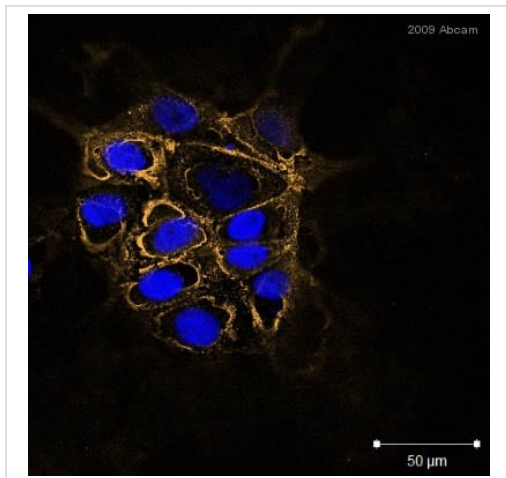
**All lanes :** Goat F(ab')<sub>2</sub> Anti-Mouse IgM mu chain (HRP) ([ab5930](#)) at 1/5000 dilution

**Predicted band size:** 235 kDa

**Observed band size:** 250 kDa

As expected, ab16288 recognizes a band in Human Embryonic Stem Cell Lysate but not Mouse Embryonic Stem Cell Lysate. The

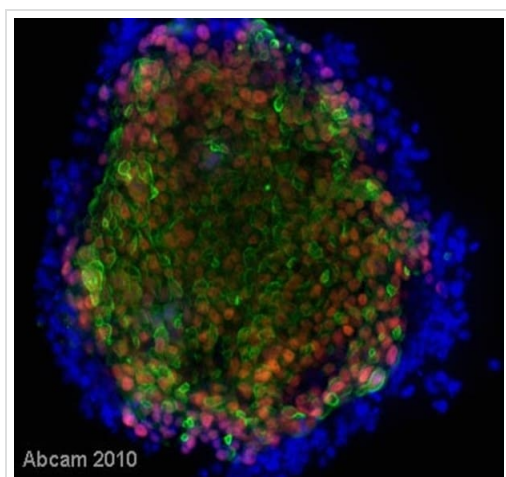
smear above the main band is due to protein glycosylation. The Western Blot profile is as expected for the TRA-1-60 monoclonal antibody.



Immunocytochemistry - Anti-TRA-1-60 (R) antibody  
[TRA-1-60] (ab16288)

This image is courtesy of an Abreview submitted by Ms Fiona Lewis

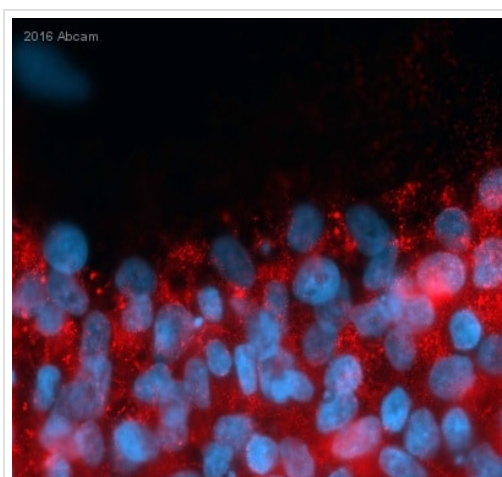
Immunocytochemical analysis of ab16288 staining TRA-160 (R) in HUES7 cells. Cells were fixed with paraformaldehyde, permeabilized with Triton and blocked in 10% serum for 1 hour at 24°C. Samples were incubated with primary antibody, dilution 1:500 (1% serum, 0.1% Triton in PBS), for 1 hour at 37°C. An Alexa Fluor® 647-conjugated goat polyclonal to mouse IgG, dilution 1:100, was used as secondary antibody.



Immunocytochemistry - Anti-TRA-1-60 (R) antibody  
[TRA-1-60] (ab16288)

This image is courtesy of an anonymous collaborator.

This image shows a colony of Human Embryonic Stem Cells stained with dapi (blue), anti-Oct4 antibody [ab19857](#) (red) and Tra-1-60 antibody ab16288 (green). The nuclei of Oct4-positive undifferentiated hESCs stained bright red, whereas Tra-1-60 staining was seen at the cell membrane. These antibodies can be used as markers of undifferentiated Human Embryonic Stem Cells.



Immunocytochemistry analysis of human iPSC cells labeling TRA-1-60 (R) with ab16288 at 1:500 dilution. Cells were fixed with paraformaldehyde and permeabilized with 0.5% TX100. 5% serum was used to block cells for 20 minutes at 25°C. A polyclonal goat anti-mouse Cy3 secondary antibody was used at 1:500 dilution.

Immunocytochemistry - Anti-TRA-1-60 (R) antibody

[TRA-1-60] (ab16288)

This image is courtesy of an abreview submitted by Vladimir Milenkovic, University Hospital Regensburg, Germany

**Please note:** All products are "FOR RESEARCH USE ONLY. NOT FOR USE IN DIAGNOSTIC PROCEDURES"

### Our Abpromise to you: Quality guaranteed and expert technical support

- Replacement or refund for products not performing as stated on the datasheet
- Valid for 12 months from date of delivery
- Response to your inquiry within 24 hours
- We provide support in Chinese, English, French, German, Japanese and Spanish
- Extensive multi-media technical resources to help you
- We investigate all quality concerns to ensure our products perform to the highest standards

If the product does not perform as described on this datasheet, we will offer a refund or replacement. For full details of the Abpromise, please visit <https://www.abcam.co.jp/abpromise> or contact our technical team.

### Terms and conditions

- Guarantee only valid for products bought direct from Abcam or one of our authorized distributors