


### Anti-TR150 antibody ab71985

[2 References](#) [画像数 2](#)

#### 製品の概要

製品名	Anti-TR150 antibody
製品の詳細	Rabbit polyclonal to TR150
由来種	Rabbit
アプリケーション	<b>適用あり:</b> WB, IHC-P
種交差性	<b>交差種:</b> Human, Chimpanzee <b>交差が予測される動物種:</b> Horse, Cow, Dog, Monkey 
免疫原	Synthetic peptide: E EGEIEDDESG TENREEKDNI QPTTE , corresponding to amino acids 930-955 of Human TR150. (NP_005110). <a href="#">Run BLAST with</a> <a href="#">Run BLAST with</a>
ポジティブ・コントロール	HeLa cell lysate, human colon tissue.
特記事項	<p>The Life Science industry has been in the grips of a reproducibility crisis for a number of years. Abcam is leading the way in addressing this with our range of recombinant monoclonal antibodies and knockout edited cell lines for gold-standard validation. Please check that this product meets your needs before purchasing.</p> <p>If you have any questions, special requirements or concerns, please send us an inquiry and/or contact our Support team ahead of purchase. Recommended alternatives for this product can be found below, along with publications, customer reviews and Q&amp;As</p>

#### 製品の特性

製品の状態	Liquid
保存方法	Shipped at 4°C. Store at +4°C short term (1-2 weeks). Upon delivery aliquot. Store at -20°C or -80°C. Avoid freeze / thaw cycle.
バッファー	pH: 7.4 Preservative: 0.05% Sodium azide Constituents: PBS, 0.05% BSA
精製度	Immunogen affinity purified
ポリ/モノ	ポリクローナル
アイソタイプ	IgG

## アプリケーション

**The Abpromise guarantee** **Abpromise保証は、** 次のテスト済みアプリケーションにおけるab71985の使用に適用されます  
アプリケーションノートには、推奨の開始希釈率がありますが、適切な希釈率につきましてはご検討ください。

アプリケーション	Abreviews	特記事項
WB		
IHC-P		

### 追加情報

IHC-P: Use at a concentration of 10 µg/ml.

WB: Use at a concentration of 0.1 - 1 µg/ml. Detects multiple bands of 140,109,60 and 40 kDa (predicted molecular weight: 109 kDa).

Not yet tested in other applications.

Optimal dilutions/concentrations should be determined by the end user.

## ターゲット情報

### 機能

Plays a role in transcriptional coactivation.

### 組織特異性

Ubiquitous.

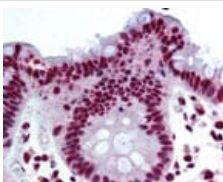
### 翻訳後修飾

Phosphorylated upon DNA damage, probably by ATM or ATR.

### 細胞内局在

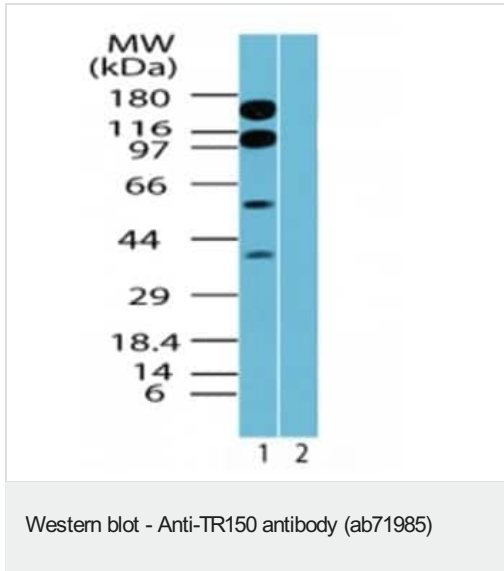
Nucleus.

## 画像



Paraffin embedded human colon tissue immunostained with ab71985 at 10 µg/ml.

Immunohistochemistry (Formalin/PFA-fixed paraffin-embedded sections) - Anti-TR150 antibody (ab71985)



**All lanes :** Anti-TR150 antibody (ab71985) at 0.1 µg/ml

**Lane 1 :** HeLa cell lysate

**Lane 2 :** HeLa cell lysate with immunising peptide

**Predicted band size:** 109 kDa

**Observed band size:** 109 kDa

**Additional bands at:** 140 kDa, 40 kDa, 60 kDa. We are unsure as to the identity of these extra bands.

**Please note:** All products are "FOR RESEARCH USE ONLY. NOT FOR USE IN DIAGNOSTIC PROCEDURES"

### Our Abpromise to you: Quality guaranteed and expert technical support

- Replacement or refund for products not performing as stated on the datasheet
- Valid for 12 months from date of delivery
- Response to your inquiry within 24 hours
- We provide support in Chinese, English, French, German, Japanese and Spanish
- Extensive multi-media technical resources to help you
- We investigate all quality concerns to ensure our products perform to the highest standards

If the product does not perform as described on this datasheet, we will offer a refund or replacement. For full details of the Abpromise, please visit <https://www.abcam.co.jp/abpromise> or contact our technical team.

### Terms and conditions

- Guarantee only valid for products bought direct from Abcam or one of our authorized distributors