


Anti-TPR antibody ab84516

19 References **画像数 4**

製品の概要

製品名	Anti-TPR antibody
製品の詳細	Rabbit polyclonal to TPR
由来種	Rabbit
アプリケーション	適用あり: IHC-P, ICC/IF
種交差性	交差種: Mouse, Human 交差が予測される動物種: Rabbit, Cow, Dog, Pig, Chimpanzee, Rhesus monkey, Gorilla, Chinese hamster, Elephant 
免疫原	Synthetic peptide, corresponding to a region between C terminal amino acids 2300-2349 of Human TPR (NP_003283.1).
ポジティブ・コントロール	Human Breast Carcinoma, Colon Carcinoma, Hodgkins Lymphoma, Linitis Plastica Stomach Cancer, Ovarian Carcinoma, Prostate Carcinoma, Skin Basal Cell Carcinoma, Skin Squamous Cell Carcinoma, Stomach Adenocarcinoma, Testicular Seminoma and mouse Squamous Cell Carcinoma tissue.
特記事項	<p>Concentration is optimized for IHC and not determined</p> <p>The Life Science industry has been in the grips of a reproducibility crisis for a number of years. Abcam is leading the way in addressing this with our range of recombinant monoclonal antibodies and knockout edited cell lines for gold-standard validation. Please check that this product meets your needs before purchasing.</p> <p>If you have any questions, special requirements or concerns, please send us an inquiry and/or contact our Support team ahead of purchase. Recommended alternatives for this product can be found below, along with publications, customer reviews and Q&As</p>

製品の特性

製品の状態	Liquid
保存方法	Shipped at 4°C. Upon delivery aliquot and store at -20°C. Avoid freeze / thaw cycles.
バッファー	<p>pH: 6.8</p> <p>Preservative: 0.09% Sodium azide</p> <p>Constituents: 0.1% BSA, Tris buffered saline</p>
精製度	Immunogen affinity purified
特記事項 (精製)	Affinity purified using an epitope specific to TPR immobilized on solid support.

ポリモノ ポリクローナル
アイソタイプ IgG

アプリケーション

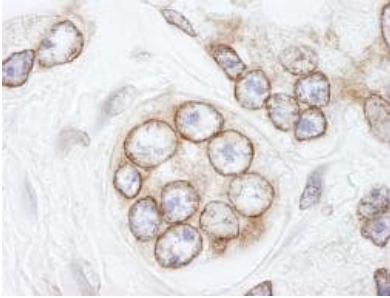
The Abpromise guarantee Abpromise保証は、次のテスト済みアプリケーションにおけるab84516の使用に適用されます
アプリケーションノートには、推奨の開始希釈率がありますが、適切な希釈率につきましてはご検討ください。

アプリケーション	Abreviews	特記事項
IHC-P		1/100 - 1/500. Epitope exposure is recommended. Exposure with citrate buffer will enhance staining. Likely to work with frozen sections.
ICC/IF		1/100 - 1/500. Permeabilization with Triton-X 100 is recommended.

ターゲット情報

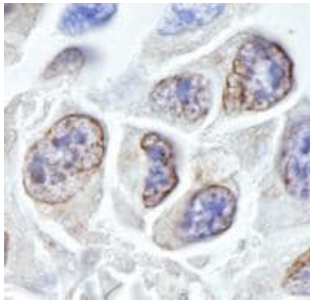
機能	Component of the cytoplasmic fibrils of the nuclear pore complex implicated in nuclear protein import. Its N-terminus is involved in activation of oncogenic kinases. Plays a role in the mitotic spindle checkpoint.
組織特異性	Highest in testis, lung, thymus, spleen and brain, lower levels in heart, liver and kidney.
関連疾患	Defects in TPR are a cause of thyroid papillary carcinoma (TPC) [MIM:188550]. TPC is a common tumor of the thyroid that typically arises as an irregular, solid or cystic mass from otherwise normal thyroid tissue. Papillary carcinomas are malignant neoplasm characterized by the formation of numerous, irregular, finger-like projections of fibrous stroma that is covered with a surface layer of neoplastic epithelial cells. Note=Chromosomal aberrations involving TPR are found in thyroid papillary carcinomas. Intrachromosomal rearrangement that links the 5'-end of the TPR gene to the protein kinase domain of NTRK1 forms the fusion protein TRK-T1. TRK-T1 is a 55 kDa protein reacting with antibodies against the carboxy terminus of the NTRK1 protein. Note=Involved in tumorigenic rearrangements with the MET or RAF genes.
翻訳後修飾	Phosphorylated upon DNA damage, probably by ATM or ATR.
細胞内局在	Nucleus > nuclear pore complex. Nucleus membrane. Chromosome > centromere > kinetochore. The assembly of the NPC is a stepwise process in which Trp-containing peripheral structures assemble after other components, including p62. Detected at kinetochores during prometaphase.

画像



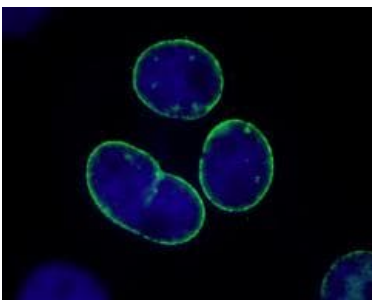
Immunohistochemistry (Formalin/PFA-fixed paraffin-embedded sections) - Anti-TPR antibody (ab84516)

ab84516 at a 1/250 dilution, staining in human TPR in human prostate carcinoma, by immunohistochemistry, Formalin/PFA-fixed paraffin-embedded tissue. Detection: DAB staining using anti-Rabbit secondary antibody at a dilution of 1/100.



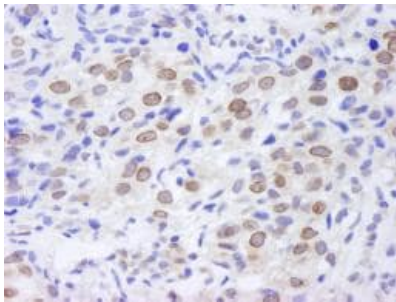
Immunohistochemistry (Formalin/PFA-fixed paraffin-embedded sections) - Anti-TPR antibody (ab84516)

ab84516 at a 1:250 dilution, staining mouse TPR in mouse squamous cell carcinoma, by immunohistochemistry, Formalin/PFA-fixed paraffin-embedded tissue. Detection: DAB staining using anti-Rabbit secondary antibody at a dilution of 1/100.



Immunocytochemistry/ Immunofluorescence - Anti-TPR antibody (ab84516)

ab84516 at a 1/250 dilution, staining human TPR in NBF-fixed asynchronous HeLa cells by immunocytochemistry. Detection: anti-rabbit IgG-FITC conjugate used at a dilution of 1/100.



ab84516 at a 1/250 dilution, staining TPR in human breast carcinoma, by immunohistochemistry, Formalin/PFA-fixed paraffin-embedded tissue. Detection: DAB staining using anti-Rabbit secondary antibody at a dilution of 1/100.

Immunohistochemistry (Formalin/PFA-fixed paraffin-embedded sections) - Anti-TPR antibody (ab84516)

Please note: All products are "FOR RESEARCH USE ONLY. NOT FOR USE IN DIAGNOSTIC PROCEDURES"

Our Abpromise to you: Quality guaranteed and expert technical support

- Replacement or refund for products not performing as stated on the datasheet
- Valid for 12 months from date of delivery
- Response to your inquiry within 24 hours
- We provide support in Chinese, English, French, German, Japanese and Spanish
- Extensive multi-media technical resources to help you
- We investigate all quality concerns to ensure our products perform to the highest standards

If the product does not perform as described on this datasheet, we will offer a refund or replacement. For full details of the Abpromise, please visit <https://www.abcam.co.jp/abpromise> or contact our technical team.

Terms and conditions

- Guarantee only valid for products bought direct from Abcam or one of our authorized distributors