

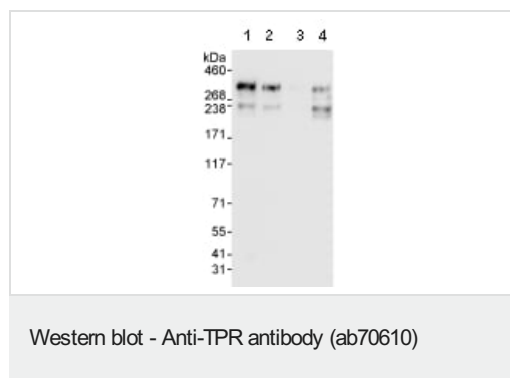
The Abpromise guarantee **Abpromise保証は、** 次のテスト済みアプリケーションにおけるab70610の使用に適用されず
 アプリケーションノートには、推奨の開始希釈率がありますが、適切な希釈率につきましてはご検討ください。

アプリケーション	Abreviews	特記事項
WB		1/2000 - 1/10000. Detects a band of approximately 300 kDa (predicted molecular weight: 267 kDa).
IP		Use at 2-5 µg/mg of lysate.

ターゲット情報

機能	Component of the cytoplasmic fibrils of the nuclear pore complex implicated in nuclear protein import. Its N-terminus is involved in activation of oncogenic kinases. Plays a role in the mitotic spindle checkpoint.
組織特異性	Highest in testis, lung, thymus, spleen and brain, lower levels in heart, liver and kidney.
関連疾患	Defects in TPR are a cause of thyroid papillary carcinoma (TPC) [MIM:188550]. TPC is a common tumor of the thyroid that typically arises as an irregular, solid or cystic mass from otherwise normal thyroid tissue. Papillary carcinomas are malignant neoplasm characterized by the formation of numerous, irregular, finger-like projections of fibrous stroma that is covered with a surface layer of neoplastic epithelial cells. Note=Chromosomal aberrations involving TPR are found in thyroid papillary carcinomas. Intrachromosomal rearrangement that links the 5'-end of the TPR gene to the protein kinase domain of NTRK1 forms the fusion protein TRK-T1. TRK-T1 is a 55 kDa protein reacting with antibodies against the carboxy terminus of the NTRK1 protein. Note=Involved in tumorigenic rearrangements with the MET or RAF genes.
翻訳後修飾	Phosphorylated upon DNA damage, probably by ATM or ATR.
細胞内局在	Nucleus > nuclear pore complex. Nucleus membrane. Chromosome > centromere > kinetochore. The assembly of the NPC is a stepwise process in which Trp-containing peripheral structures assemble after other components, including p62. Detected at kinetochores during prometaphase.

画像



All lanes : Anti-TPR antibody (ab70610) at 0.04 µg/ml

Lane 1 : HeLa whole cell lysate at 50 µg

Lane 2 : HeLa whole cell lysate at 15 µg

Lane 3 : HeLa whole cell lysate at 5 µg

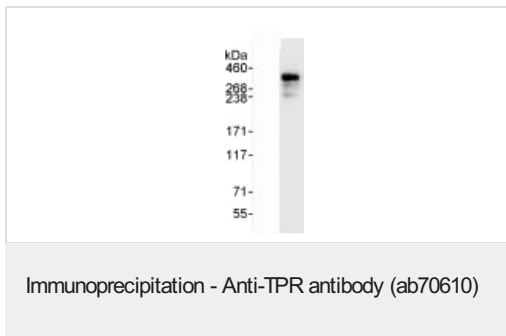
Lane 4 : 293T whole cell lysate at 50 µg

Predicted band size: 267 kDa

Observed band size: 300 kDa

Additional bands at: 235 kDa. We are unsure as to the identity of these extra bands.

Exposure time: 30 seconds



Detection of Human TPR by Western Blot of Immunoprecipitate. ab70610 at 1µg/ml staining TPR in HeLa whole cell lysates immunoprecipitated using ab70610 at 3µg/mg lysate (1 mg/IP; 20% of IP loaded/lane). Detection: Chemiluminescence with exposure time of 1 second.

Please note: All products are "FOR RESEARCH USE ONLY. NOT FOR USE IN DIAGNOSTIC PROCEDURES"

Our Abpromise to you: Quality guaranteed and expert technical support

- Replacement or refund for products not performing as stated on the datasheet
- Valid for 12 months from date of delivery
- Response to your inquiry within 24 hours
- We provide support in Chinese, English, French, German, Japanese and Spanish
- Extensive multi-media technical resources to help you
- We investigate all quality concerns to ensure our products perform to the highest standards

If the product does not perform as described on this datasheet, we will offer a refund or replacement. For full details of the Abpromise, please visit <https://www.abcam.co.jp/abpromise> or contact our technical team.

Terms and conditions

- Guarantee only valid for products bought direct from Abcam or one of our authorized distributors