


Anti-TPH2 antibody ab121013

★★★★☆ [4 Abreviews](#) [10 References](#) [画像数 1](#)

製品の概要

製品名	Anti-TPH2 antibody
製品の詳細	Goat polyclonal to TPH2
由来種	Goat
アプリケーション	適用あり: WB
種交差性	交差種: Human 交差が予測される動物種: Rat, Rabbit, Horse, Hamster, Cow, Dog, Pig, Cynomolgus monkey, Rhesus monkey, Gorilla, Orangutan 
免疫原	Synthetic peptide corresponding to Human TPH2 aa 1-100 (N terminal) (Cysteine residue). NP_775489.2 Database link: Q8IWU9 Run BLAST with Run BLAST with
ポジティブ・コントロール	WB: HEK293 lysate.
特記事項	The Life Science industry has been in the grips of a reproducibility crisis for a number of years. Abcam is leading the way in addressing this with our range of recombinant monoclonal antibodies and knockout edited cell lines for gold-standard validation. Please check that this product meets your needs before purchasing. If you have any questions, special requirements or concerns, please send us an inquiry and/or contact our Support team ahead of purchase. Recommended alternatives for this product can be found below, along with publications, customer reviews and Q&As

製品の特性

製品の状態	Liquid
保存方法	Shipped at 4°C. Upon delivery aliquot and store at -20°C. Avoid repeated freeze / thaw cycles.
バッファー	pH: 7.30 Preservative: 0.02% Sodium azide Constituents: 0.5% BSA, 99% Tris buffered saline
精製度	Immunogen affinity purified
特記事項 (精製)	ab121013 is purified from goat serum by ammonium sulphate precipitation followed by antigen affinity chromatography using the immunizing peptide.
ポリ/モノ	ポリクローナル

アプリケーション

The Abpromise guarantee Abpromise保証は、次のテスト済みアプリケーションにおけるab121013の使用に適用されます
アプリケーションノートには、推奨の開始希釈率がありますが、適切な希釈率につきましてはご確認ください。

アプリケーション	Abreviews	特記事項
WB		Use a concentration of 0.5 - 2 µg/ml. Detects a band of approximately 60 kDa (predicted molecular weight: 56 kDa). 1 hour primary incubation is recommended for this product.

ターゲット情報

組織特異性

Brain specific.

パスウェイ

Aromatic compound metabolism; serotonin biosynthesis; serotonin from L-tryptophan: step 1/2.

関連疾患

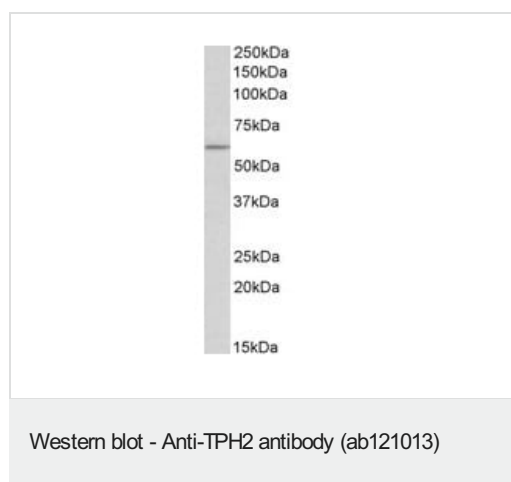
Genetic variation in TPH2 may influence susceptibility to major depressive disorder (MDD) [MIM:608516].

Defects in TPH2 are the cause of susceptibility to attention deficit-hyperactivity disorder type 7 (ADHD7) [MIM:613003]. ADHD is a neurobehavioral developmental disorder and is primarily characterized by the co-existence of attentional problems and hyperactivity, with each behavior occurring infrequently alone. Note=Naturally occurring variants of TPH2 with impaired enzyme activity could cause deficiency of serotonin production and result in an increased risk of developing behavioral disorders.

配列類似性

Belongs to the bipterin-dependent aromatic amino acid hydroxylase family.
Contains 1 ACT domain.

画像



Anti-TPH2 antibody (ab121013) at 0.5 µg/ml + HEK293 lysate in RIPA buffer at 35 µg

Predicted band size: 56 kDa

Primary incubation was 1 hour. Detected by chemiluminescence.

Our Abpromise to you: Quality guaranteed and expert technical support

- Replacement or refund for products not performing as stated on the datasheet
- Valid for 12 months from date of delivery
- Response to your inquiry within 24 hours

- We provide support in Chinese, English, French, German, Japanese and Spanish
- Extensive multi-media technical resources to help you
- We investigate all quality concerns to ensure our products perform to the highest standards

If the product does not perform as described on this datasheet, we will offer a refund or replacement. For full details of the Abpromise, please visit <https://www.abcam.co.jp/abpromise> or contact our technical team.

Terms and conditions

- Guarantee only valid for products bought direct from Abcam or one of our authorized distributors