

Anti-TOR1AIP1 antibody ab86307

★★★★★ [2 Abreviews](#) [1 References](#) [画像数 2](#)

製品の概要

製品名	Anti-TOR1AIP1 antibody
製品の詳細	Rabbit polyclonal to TOR1AIP1
由来種	Rabbit
アプリケーション	適用あり: WB, IP
種交差性	交差種: Human
免疫原	Synthetic peptide, corresponding to a region between residues 175 and 225 of human TOR1AIP1 (NP_056417.2).
ポジティブ・コントロール	WB: Jurkat nuclear extract lysate (ab14844), HeLa and 293T whole cell lysates. IP: HeLa whole cell lysate.
特記事項	<p>The Life Science industry has been in the grips of a reproducibility crisis for a number of years. Abcam is leading the way in addressing this with our range of recombinant monoclonal antibodies and knockout edited cell lines for gold-standard validation. Please check that this product meets your needs before purchasing.</p> <p>If you have any questions, special requirements or concerns, please send us an inquiry and/or contact our Support team ahead of purchase. Recommended alternatives for this product can be found below, along with publications, customer reviews and Q&As</p>

製品の特性

製品の状態	Liquid
保存方法	Shipped at 4°C. Upon delivery aliquot and store at -20°C. Avoid freeze / thaw cycles.
バッファー	pH: 6.8 Preservative: 0.09% Sodium azide Constituents: 0.1% BSA, Tris buffered saline
精製度	Immunogen affinity purified
特記事項(精製)	ab86307 was affinity purified using an epitope specific to TOR1AIP1 immobilized on solid support.
ポリ/モノ	ポリクローナル
アイソタイプ	IgG

アプリケーション

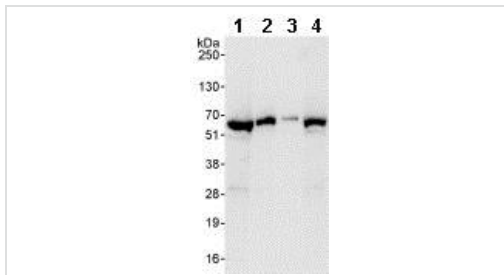
The Abpromise guarantee **Abpromise保証は、次のテスト済みアプリケーションにおけるab86307の使用に適用されます**
アプリケーションノートには、推奨の開始希釈率がありますが、適切な希釈率につきましてはご検討ください。

アプリケーション	Abreviews	特記事項
WB		1/2000 - 1/10000. Predicted molecular weight: 66 kDa.
IP		Use at 2-5 µg/mg of lysate.

ターゲット情報

機能	Binds to A- and B-type lamins. Possible role in membrane attachment and assembly of the nuclear lamina.
配列類似性	Belongs to the TOR1AIP family.
翻訳後修飾	Phosphorylated upon DNA damage, probably by ATM or ATR.
細胞内局在	Nucleus inner membrane.

画像



Western blot - Anti-TOR1AIP1 antibody (ab86307)

All lanes : Anti-TOR1AIP1 antibody (ab86307) at 0.04 µg/ml

Lane 1 : HeLa whole cell lysate at 50 µg

Lane 2 : HeLa whole cell lysate at 15 µg

Lane 3 : HeLa whole cell lysate at 5 µg

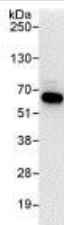
Lane 4 : 293T whole cell lysate at 50 µg

Developed using the ECL technique.

Predicted band size: 66 kDa

Observed band size: 66 kDa

Exposure time: 30 seconds



Immunoprecipitation - Anti-TOR1AIP1 antibody
(ab86307)

Detection of TOR1AIP1 by Western Blot of Immunoprecipitate.
ab86307, at 1 $\mu\text{g/ml}$, staining TOR1AIP1 in HeLa whole cell lysate
immunoprecipitated using ab86307 at 3 $\mu\text{g/mg}$ lysate (1 mg/IP;
20% of IP loaded/lane).

Detection: Chemiluminescence with an exposure time of 10
seconds.

Please note: All products are "FOR RESEARCH USE ONLY. NOT FOR USE IN DIAGNOSTIC PROCEDURES"

Our Abpromise to you: Quality guaranteed and expert technical support

- Replacement or refund for products not performing as stated on the datasheet
- Valid for 12 months from date of delivery
- Response to your inquiry within 24 hours
- We provide support in Chinese, English, French, German, Japanese and Spanish
- Extensive multi-media technical resources to help you
- We investigate all quality concerns to ensure our products perform to the highest standards

If the product does not perform as described on this datasheet, we will offer a refund or replacement. For full details of the Abpromise, please visit <https://www.abcam.co.jp/abpromise> or contact our technical team.

Terms and conditions

- Guarantee only valid for products bought direct from Abcam or one of our authorized distributors