


Anti-Topoisomerase II beta/TOP2B antibody ab125297

KO 評価済

2 References 画像数 3

製品の概要

製品名	Anti-Topoisomerase II beta/TOP2B antibody
製品の詳細	Rabbit polyclonal to Topoisomerase II beta/TOP2B
由来種	Rabbit
アプリケーション	適用あり: WB
種交差性	<p>交差種: Mouse, Human</p> <p>交差が予測される動物種: Rat, Cow, Dog, Pig, Chimpanzee, Macaque monkey, Gorilla, Orangutan </p>
免疫原	<p>Synthetic peptide corresponding to Human Topoisomerase II beta/TOP2B aa 1-100 conjugated to keyhole limpet haemocyanin.</p> <p>(Peptide available as ab156303)</p>
ポジティブ・コントロール	WB: Wild-type NALM-6 cell lysate. HeLa and NIH/3T3 whole cell lysate. Jurkat, K562, MCF7 and HepG2 cell lysate.
特記事項	<p>The Life Science industry has been in the grips of a reproducibility crisis for a number of years. Abcam is leading the way in addressing this with our range of recombinant monoclonal antibodies and knockout edited cell lines for gold-standard validation. Please check that this product meets your needs before purchasing.</p> <p>If you have any questions, special requirements or concerns, please send us an inquiry and/or contact our Support team ahead of purchase. Recommended alternatives for this product can be found below, along with publications, customer reviews and Q&As</p>

製品の特性

製品の状態	Liquid
保存方法	Shipped at 4°C. Store at +4°C short term (1-2 weeks). Upon delivery aliquot. Store at -20°C or -80°C. Avoid freeze / thaw cycle.
バッファー	<p>pH: 7.40</p> <p>Preservative: 0.02% Sodium azide</p> <p>Constituent: PBS</p>

Batches of this product that have a concentration < 1mg/ml may have BSA added as a stabilising

agent. If you would like information about the formulation of a specific lot, please contact our scientific support team who will be happy to help.

精製度

Immunogen affinity purified

ポリ/モノ

ポリクローナル

アイソタイプ

IgG

アプリケーション

The Abpromise guarantee

Abpromise保証は、次のテスト済みアプリケーションにおけるab125297の使用に適用されます

アプリケーションノートには、推奨の開始希釈率がありますが、適切な希釈率につきましてはご確認ください。

アプリケーション	Abreviews	特記事項
WB		Use a concentration of 1 µg/ml. Detects a band of approximately 183 kDa (predicted molecular weight: 183 kDa). Abcam recommends using milk as the blocking agent - 5%

ターゲット情報

機能

Control of topological states of DNA by transient breakage and subsequent rejoining of DNA strands. Topoisomerase II makes double-strand breaks. Indirectly involved in vitamin D-coupled transcription regulation via its association with the WINAC complex, a chromatin-remodeling complex recruited by vitamin D receptor (VDR), which is required for the ligand-bound VDR-mediated transrepression of the CYP27B1 gene.

配列類似性

Belongs to the type II topoisomerase family.

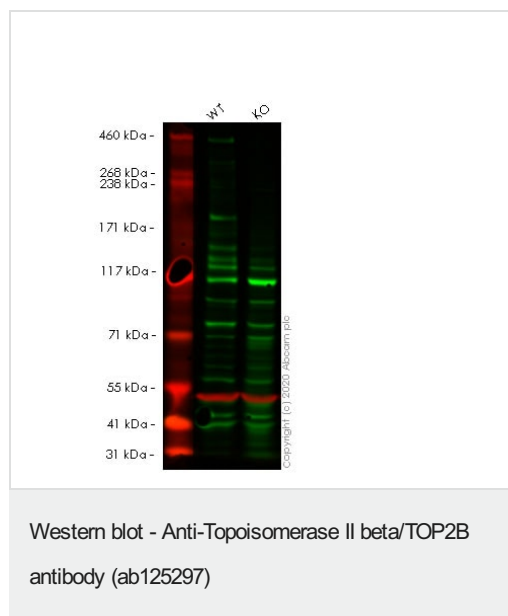
翻訳後修飾

Phosphorylated upon DNA damage, probably by ATM or ATR.

細胞内局在

Cytoplasm. Nucleus > nucleolus.

画像



All lanes : Anti-Topoisomerase II beta/TOP2B antibody (ab125297)

Lane 1 : Wild-type HEK-293T cell lysate

Lane 2 : TOP2B knockout HEK-293T cell lysate

Lysates/proteins at 40 µg per lane.

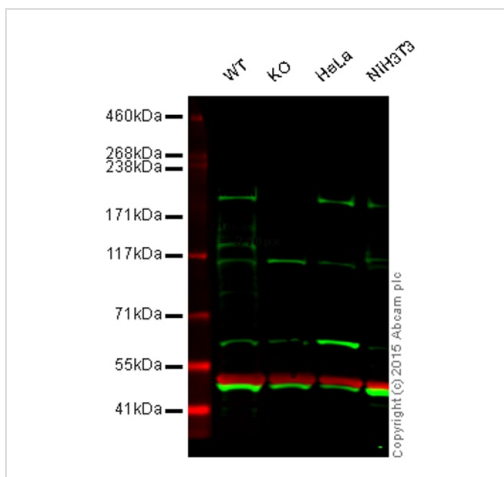
Performed under reducing conditions.

Predicted band size: 183 kDa

Observed band size: 183 kDa

Lanes 1- 2: Merged signal (red and green). Green - ab125297 observed at 183 kDa. Red - Anti-alpha Tubulin antibody [DM1A] - Loading Control ([ab7291](#)) observed at 50 kDa.

ab125297 was shown to react with Topoisomerase II beta/TOP2B in wild-type HEK-293T cells in western blot. Loss of signal was observed when knockout cell line [ab266340](#) (knockout cell lysate [ab257286](#)) was used. Wild-type HEK-293T and TOP2B knockout HEK-293T cell lysates were subjected to SDS-PAGE. ab125297 and Anti-alpha Tubulin antibody [DM1A] - Loading Control ([ab7291](#)) overnight at 4°C at a 1 µg/ml and a 1 in 20000 dilution respectively. Blots were developed with Goat anti-Rabbit IgG H&L (IRDye®800CW) preadsorbed ([ab216773](#)) and Goat anti-Mouse IgG H&L (IRDye®680RD) preadsorbed ([ab216776](#)) secondary antibodies at 1 in 20000 dilution for 1 hour at room temperature before imaging.



Western blot - Anti-Topoisomerase II beta/TOP2B antibody (ab125297)

Lane 1: Wild-type NALM-6 cell lysate (20 µg)

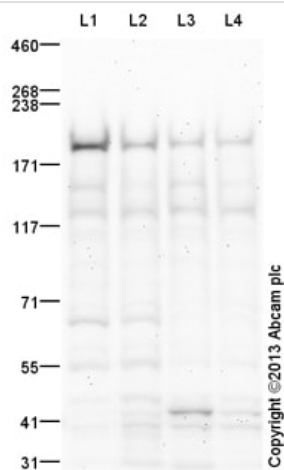
Lane 2: Topoisomerase II beta/TOP2B knockout NALM-6 cell lysate (20 µg)

Lane 3: HeLa cell lysate (20 µg)

Lane 4: NIH/3T3 cell lysate (20 µg)

Lanes 1 - 4: Merged signal (red and green). Green - ab125297 observed at 200 kDa. Red - loading control, [ab7291](#), observed at 50 kDa.

ab125297 was shown to recognize Topoisomerase II beta/TOP2B when Topoisomerase II beta/TOP2B knockout samples were used, along with additional cross-reactive bands. Wild-type and Topoisomerase II beta/TOP2B knockout samples were subjected to SDS-PAGE. ab125297 and [ab7291](#) (loading control to alpha tubulin) were diluted 1 µg/mL and 1/2000 and incubated overnight at 4°C. Blots were developed with Goat anti-Rabbit IgG H&L (IRDye® 800CW) preadsorbed [ab216773](#) and Goat anti-Mouse IgG H&L (IRDye® 680RD) preadsorbed [ab216776](#) secondary antibodies at 1/10000 dilution for 1 h at room temperature before imaging.



Western blot - Anti-Topoisomerase II beta/TOP2B antibody (ab125297)

All lanes : Anti-Topoisomerase II beta/TOP2B antibody (ab125297) at 1 µg/ml (Milk blocking - 5%)

Lane 1 : Jurkat (Human T cell lymphoblast-like cell line) Whole Cell Lysate

Lane 2 : K562 (Human erythromyeloblastoid leukemia cell line) Whole Cell Lysate

Lane 3 : MCF7 (Human breast adenocarcinoma cell line) Whole Cell Lysate

Lane 4 : HepG2 (Human hepatocellular liver carcinoma cell line) Whole Cell Lysate

Lysates/proteins at 25 µg per lane.

Secondary

All lanes : Goat Anti-Rabbit IgG H&L (HRP) ([ab97051](#)) at 1/10000 dilution

Developed using the ECL technique.

Performed under reducing conditions.

Predicted band size: 183 kDa

Observed band size: 183 kDa

Additional bands at: 120 kDa, 150 kDa, 42 kDa, 55 kDa, 66 kDa.

We are unsure as to the identity of these extra bands.

Exposure time: 8 minutes

Abcam recommends using milk as the blocking agent - 5%. This blot was produced using a 3-8% Tris Acetate gel under the TA buffer system. The gel was run at 150V for 60 minutes before being transferred onto a Nitrocellulose membrane at 30V for 70 minutes. The membrane was then blocked for an hour using 5% Milk before being incubated with ab125297 overnight at 4°C. Antibody binding was detected using an anti-rabbit antibody conjugated to HRP, and

visualised using ECL development solution.

Please note: All products are "FOR RESEARCH USE ONLY. NOT FOR USE IN DIAGNOSTIC PROCEDURES"

Our Abpromise to you: Quality guaranteed and expert technical support

- Replacement or refund for products not performing as stated on the datasheet
- Valid for 12 months from date of delivery
- Response to your inquiry within 24 hours
- We provide support in Chinese, English, French, German, Japanese and Spanish
- Extensive multi-media technical resources to help you
- We investigate all quality concerns to ensure our products perform to the highest standards

If the product does not perform as described on this datasheet, we will offer a refund or replacement. For full details of the Abpromise, please visit <https://www.abcam.co.jp/abpromise> or contact our technical team.

Terms and conditions

- Guarantee only valid for products bought direct from Abcam or one of our authorized distributors