

Anti-TopBP1 antibody ab2402

★★★★☆ **15 Abreviews** **40 References** 画像数 3

製品の概要

製品名	Anti-TopBP1 antibody
製品の詳細	Rabbit polyclonal to TopBP1
由来種	Rabbit
アプリケーション	適用あり: WB, IP
種交差性	交差種: Mouse, Human
免疫原	Synthetic peptide within Human TopBP1 aa 1400-1500. The exact immunogen sequence used to generate this antibody is proprietary information. If additional detail on the immunogen is needed to determine the suitability of the antibody for your needs, please contact our Scientific Support team to discuss your requirements. NP_008958.1 (GeneID 11073). Database link: Q92547
ポジティブ・コントロール	WB: HeLa, HEK-293T, TCMK-1, NIH/3T3 and Jurkat whole cell lysate. IP: TopBP1 in HeLa whole cell lysate.
特記事項	<p>The Life Science industry has been in the grips of a reproducibility crisis for a number of years. Abcam is leading the way in addressing this with our range of recombinant monoclonal antibodies and knockout edited cell lines for gold-standard validation. Please check that this product meets your needs before purchasing.</p> <p>If you have any questions, special requirements or concerns, please send us an inquiry and/or contact our Support team ahead of purchase. Recommended alternatives for this product can be found below, along with publications, customer reviews and Q&As</p>

製品の特性

製品の状態	Liquid
保存方法	Shipped at 4°C. Store at +4°C short term (1-2 weeks). Upon delivery aliquot. Store at -20°C. Avoid freeze / thaw cycle.
バッファー	pH: 7 Preservative: 0.1% Sodium azide Constituents: 0.021% PBS, 1.764% Sodium citrate, 1.815% Tris
精製度	Immunogen affinity purified
特記事項 (精製)	Antibody was affinity purified using the peptide immobilized on solid support. Antibody concentration was determined by extinction coefficient: absorbance at 280 nm of 1.4 equals 1.0

	mg of IgG.
ポリ/モノ	ポリクローナル
アイソタイプ	IgG

アプリケーション

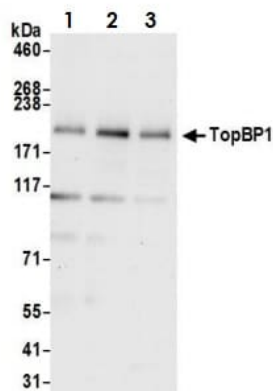
The Abpromise guarantee **Abpromise保証は、** 次のテスト済みアプリケーションにおけるab2402の使用に適用されます
アプリケーションノートには、推奨の開始希釈率がありますが、適切な希釈率につきましてはご検討ください。

アプリケーション	Abreviews	特記事項
WB	★★★★★ (8)	1/2000 - 1/10000. Detects a band of approximately 200 kDa (predicted molecular weight: 173.3 kDa).
IP	★★★★★ (2)	Use at 2-5 µg/mg of lysate.

ターゲット情報

機能	Required for DNA replication. Plays a role in the rescue of stalled replication forks and checkpoint control. Binds double-stranded DNA breaks and nicks as well as single-stranded DNA. Recruits the SWI/SNF chromatin remodeling complex to E2F1-responsive promoters. Down-regulates E2F1 activity and inhibits E2F1-dependent apoptosis during G1/S transition and after DNA damage. Induces a large increase in the kinase activity of ATR.
組織特異性	Highly expressed in heart, brain, placenta, lung and kidney.
配列類似性	Contains 8 BRCT domains.
翻訳後修飾	Phosphorylated on serine and threonine residues in response to X-ray irradiation. Ubiquitinated and degraded by the proteasome. X-ray irradiation reduces ubiquitination.
細胞内局在	Nucleus. Cytoplasm, cytoskeleton, microtubule organizing center, centrosome. Cytoplasm, cytoskeleton, spindle pole. Chromosome. Detected on unpaired autosomes in meiotic prophase cells. Detected on X and Y chromosomes during later stages of prophase. Colocalizes with ATR and H2AFX at unsynapsed chromosome cores during prophase (By similarity). Has a uniform nuclear distribution during G phase. Colocalizes with BRCA1 at stalled replication forks during S phase. In mitotic cells it colocalizes with BRCA1 at spindle poles and centrosomes during metaphase and anaphase. Detected in discrete foci together with PML and numerous DNA repair enzymes after DNA damage by alkylating agents, UV or gamma irradiation. Localizes to sites of DNA damage in a H2AX- independent manner.

画像



Western blot - Anti-TopBP1 antibody (ab2402)

All lanes : Anti-Cytokeratin 10 antibody [LHP1] ([ab2409](#)) at 0.1 µg/ml

Lane 1 : HeLa (Human epithelial cell line from cervix adenocarcinoma) whole cell lysate

Lane 2 : HEK-293T (Human epithelial cell line from embryonic kidney transformed with large T antigen) whole cell lysate

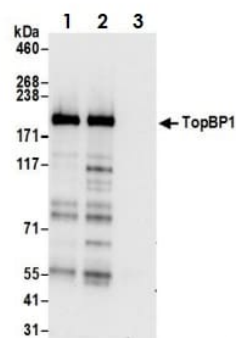
Lane 3 : Jurkat (Human T cell leukemia cell line from peripheral blood) whole cell lysate

Lysates/proteins at 15 µg per lane.

Predicted band size: 173.3 kDa

Exposure time: 10 seconds

Lysates prepared using NETN lysis buffer.



Immunoprecipitation - Anti-TopBP1 antibody (ab2402)

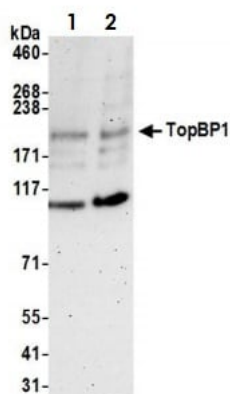
Samples: Whole cell lysate (1.0 mg per IP reaction; 20% of IP loaded) from HeLa cells prepared using NETN lysis buffer.

Antibodies: [ab2409](#) used for IP at 3 µg per reaction.

Two lots tested (Lanes 1 and 2).

Lane 3 is Control IgG.

For blotting immunoprecipitated TopBP1, [ab2409](#) was used at 0.4 µg/ml. Detection: Chemiluminescence with an exposure time of 10 seconds.



Western blot - Anti-TopBP1 antibody (ab2402)

All lanes : Anti-Cytokeratin 10 antibody [LHP1] ([ab2409](#)) at 0.1 µg/ml

Lane 1 : TCMK-1 (Mouse kidney epithelial cell line) whole cell lysate

Lane 2 : NIH/3T3 (Mouse embryonic fibroblast cell line) whole cell lysate

Lysates/proteins at 50 µg per lane.

Predicted band size: 173.3 kDa

Exposure time: 3 minutes

Lysates prepared using NETN lysis buffer.

Please note: All products are "FOR RESEARCH USE ONLY. NOT FOR USE IN DIAGNOSTIC PROCEDURES"

Our Abpromise to you: Quality guaranteed and expert technical support

- Replacement or refund for products not performing as stated on the datasheet
- Valid for 12 months from date of delivery
- Response to your inquiry within 24 hours
- We provide support in Chinese, English, French, German, Japanese and Spanish
- Extensive multi-media technical resources to help you
- We investigate all quality concerns to ensure our products perform to the highest standards

If the product does not perform as described on this datasheet, we will offer a refund or replacement. For full details of the Abpromise, please visit <https://www.abcam.co.jp/abpromise> or contact our technical team.

Terms and conditions

- Guarantee only valid for products bought direct from Abcam or one of our authorized distributors