

Anti-TOM1L2 antibody ab96320

8 References [画像検索?](#)

医薬用外劇物

製品の概要

製品名	Anti-TOM1L2 antibody
製品の詳細	Rabbit polyclonal to TOM1L2
由来種	Rabbit
アプリケーション	適用あり: WB, IP
種交差性	交差種: Human
免疫原	Synthetic peptide corresponding to a region within the internal sequence amino acids 394-457 (SLAEQRKTVTYEDPQAVGGLASALDNRKQSSEGIIPVAQPSVM DDIEVWLR TDCLKGDDLEEGVTS) of Human TOM1L2.

 [Run BLAST with](#)

 [Run BLAST with](#)

ポジティブ・コントロール A549, HeLa, Jurkat and NT2D1 cells

特記事項

The Life Science industry has been in the grips of a reproducibility crisis for a number of years. Abcam is leading the way in addressing this with our range of recombinant monoclonal antibodies and knockout edited cell lines for gold-standard validation. Please check that this product meets your needs before purchasing.

If you have any questions, special requirements or concerns, please send us an inquiry and/or contact our Support team ahead of purchase. Recommended alternatives for this product can be found below, along with publications, customer reviews and Q&As

製品の特性

製品の状態	Liquid
保存方法	Shipped at 4°C. Upon delivery aliquot and store at -20°C. Avoid repeated freeze / thaw cycles.
バッファー	pH: 7.00 Preservative: 0.01% Thimerosal (merthiolate) Constituents: 1.21% Tris, 0.75% Glycine, 10% Glycerol (glycerin, glycerine)
精製度	Immunogen affinity purified
ポリ/モノ	ポリクローナル
アイソタイプ	IgG

アプリケーション

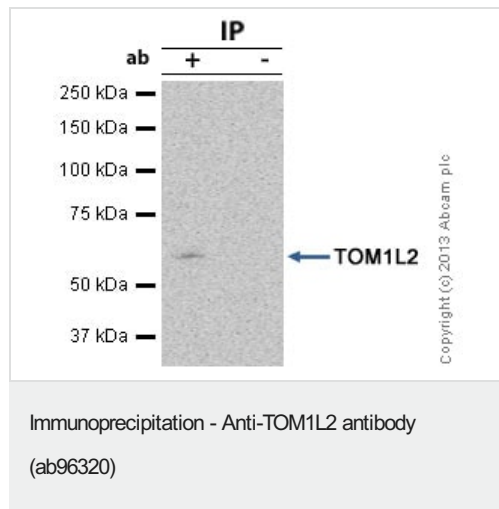
The Abpromise guarantee Abpromise保証は、次のテスト済みアプリケーションにおけるab96320の使用に適用されず
アプリケーションノートには、推奨の開始希釈率がありますが、適切な希釈率につきましてはご検討ください。

アプリケーション	Abreviews	特記事項
WB		1/500 - 1/3000. Predicted molecular weight: 56 kDa.
IP		Use a concentration of 5 µg/ml.

ターゲット情報

機能	Probable role in protein transport. May regulate growth factor-induced mitogenic signaling.
組織特異性	Ubiquitously expressed with higher expression in heart and skeletal muscle.
配列類似性	Belongs to the TOM1 family. Contains 1 GAT domain. Contains 1 VHS domain.
ドメイン	The GAT domain mediates interaction with TOLLIP.

画像



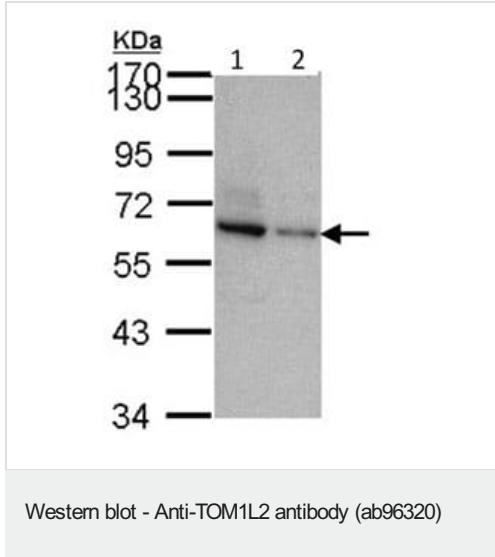
TOM1L2 was immunoprecipitated using 0.5mg Jurkat whole cell extract, 5µg of Rabbit polyclonal to TOM1L2 and 50µl of protein G magnetic beads (+). No antibody was added to the control (-).

The antibody was incubated under agitation with Protein G beads for 10min, Jurkat whole cell extract lysate diluted in RIPA buffer was added to each sample and incubated for a further 10min under agitation.

Proteins were eluted by addition of 40µl SDS loading buffer and incubated for 10min at 70°C; 10µl of each sample was separated on a SDS PAGE gel, transferred to a nitrocellulose membrane, blocked with 5% BSA and probed with ab96320.

Secondary: Mouse monoclonal [SB62a] Secondary Antibody to Rabbit IgG light chain (HRP) ([ab99697](#))

>Band: 56kDa; TOM1L2



All lanes : Anti-TOM1L2 antibody (ab96320) at 1/1000 dilution

Lane 1 : Jurkat whole cell lysate

Lane 2 : NT2D1 whole cell lysate

Lysates/proteins at 30 µg per lane.

Predicted band size: 56 kDa

7.5% SDS PAGE

Please note: All products are "FOR RESEARCH USE ONLY. NOT FOR USE IN DIAGNOSTIC PROCEDURES"

Our Abpromise to you: Quality guaranteed and expert technical support

- Replacement or refund for products not performing as stated on the datasheet
- Valid for 12 months from date of delivery
- Response to your inquiry within 24 hours
- We provide support in Chinese, English, French, German, Japanese and Spanish
- Extensive multi-media technical resources to help you
- We investigate all quality concerns to ensure our products perform to the highest standards

If the product does not perform as described on this datasheet, we will offer a refund or replacement. For full details of the Abpromise, please visit <https://www.abcam.co.jp/abpromise> or contact our technical team.

Terms and conditions

- Guarantee only valid for products bought direct from Abcam or one of our authorized distributors