



Anti-TOM1L2 antibody ab121716

画像数 5

製品の概要

製品名	Anti-TOM1L2 antibody
製品の詳細	Rabbit polyclonal to TOM1L2
由来種	Rabbit
アプリケーション	適用あり: ICC/IF, IHC-P, WB
種交差性	交差種: Mouse, Rat, Human
免疫原	antigen sequence, corresponding to amino acids 158-242 (ALSPIHTPQR SVPEVDPAAT MPRSQSQQRT SAGSYSSPPP APYSAPQAPA LSVTGPITAN SEQIARLRSE LDVVVRGNTKV MSEML) of Human TOM1L2.  Run BLAST with  Run BLAST with
ポジティブ・コントロール	Human heart muscle tissue; RT4, U251 MG, Human plasma, liver and tonsil lysates.
特記事項	<p>The Life Science industry has been in the grips of a reproducibility crisis for a number of years. Abcam is leading the way in addressing this with our range of recombinant monoclonal antibodies and knockout edited cell lines for gold-standard validation. Please check that this product meets your needs before purchasing.</p> <p>If you have any questions, special requirements or concerns, please send us an inquiry and/or contact our Support team ahead of purchase. Recommended alternatives for this product can be found below, along with publications, customer reviews and Q&As</p>

製品の特性

製品の状態	Liquid
保存方法	Shipped at 4°C. Upon delivery aliquot and store at -20°C. Avoid freeze / thaw cycles.
バッファー	pH: 7.20 Preservative: 0.02% Sodium azide Constituents: 40% Glycerol (glycerin, glycerine), 59% PBS
精製度	Immunogen affinity purified
ポリ/モノ	ポリクローナル
アイソタイプ	IgG

アプリケーション

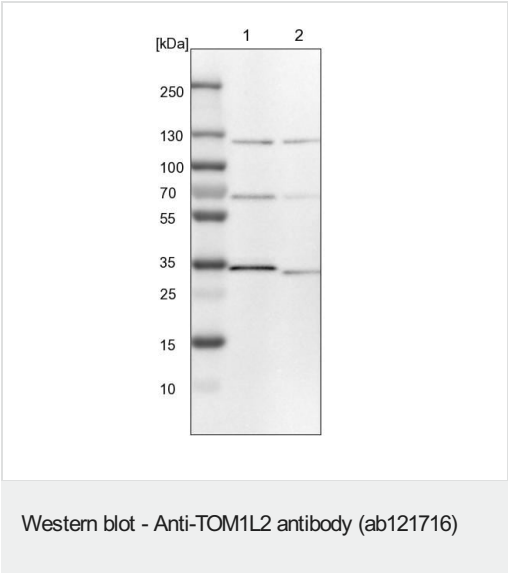
The Abpromise guarantee **Abpromise保証は、**次のテスト済みアプリケーションにおけるab121716の使用に適用されます
アプリケーションノートには、推奨の開始希釈率がありますが、適切な希釈率につきましてはご検討ください。

アプリケーション	Abreviews	特記事項
ICC/IF		Use a concentration of 1 - 4 µg/ml. Recommend PFA Fixation and Triton X-100 treatment
IHC-P		1/200 - 1/500. Perform heat mediated antigen retrieval with citrate buffer pH 6 before commencing with IHC staining protocol.
WB		Use a concentration of 0.04 - 0.4 µg/ml.

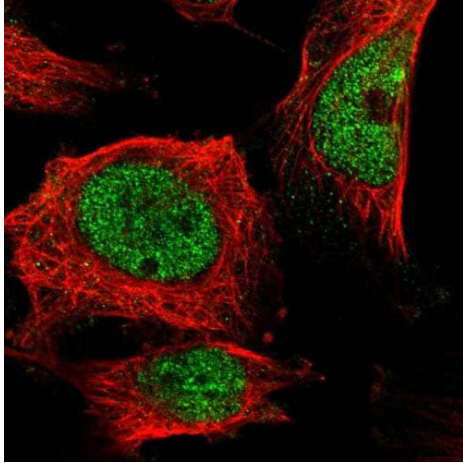
ターゲット情報

機能	Probable role in protein transport. May regulate growth factor-induced mitogenic signaling.
組織特異性	Ubiquitously expressed with higher expression in heart and skeletal muscle.
配列類似性	Belongs to the TOM1 family. Contains 1 GAT domain. Contains 1 VHS domain.
ドメイン	The GAT domain mediates interaction with TOLLIP.

画像

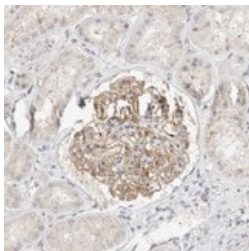


Lane 1: NIH-3T3 cell lysate (Mouse embryonic fibroblast cells)
Lane 2: NBT-II cell lysate (Rat Wistar bladder tumour cells)



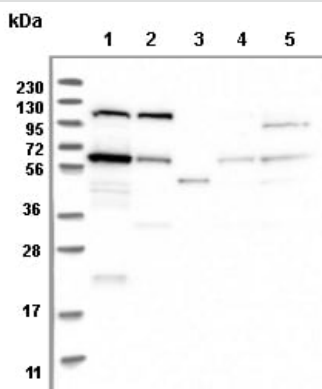
Immunocytochemistry/ Immunofluorescence - Anti-TOM1L2 antibody (ab121716)

Immunofluorescent staining of Human cell line U-251MG shows positivity in nuclei but not nucleoli. Recommended concentration of ab121716 1-4 µg/ml. Cells treated with PFA/Triton X-100.



Immunohistochemistry (Formalin/PFA-fixed paraffin-embedded sections) - Anti-TOM1L2 antibody (ab121716)

ab121716 at 1/250 dilution staining TOM1L2 in Paraffin-embedded Human heart muscle tissue by Immunohistochemistry.



Western blot - Anti-TOM1L2 antibody (ab121716)

All lanes : Anti-TOM1L2 antibody (ab121716) at 1/250 dilution

Lane 1 : RT4 cell lysate

Lane 2 : U251 MG cell lysate

Lane 3 : Human Plasma

Lane 4 : Human Liver tissue lysate

Lane 5 : Human Tonsil tissue lysate

Developed using the ECL technique.

Immunohistochemistry (Formalin/PFA-fixed paraffin-embedded sections) - Anti-TOM1L2 antibody (ab121716)

Immunohistochemical staining of Human heart muscle shows moderate cytoplasmic positivity in myocytes using ab121716

Please note: All products are "FOR RESEARCH USE ONLY. NOT FOR USE IN DIAGNOSTIC PROCEDURES"

Our Abpromise to you: Quality guaranteed and expert technical support

- Replacement or refund for products not performing as stated on the datasheet
- Valid for 12 months from date of delivery
- Response to your inquiry within 24 hours
- We provide support in Chinese, English, French, German, Japanese and Spanish
- Extensive multi-media technical resources to help you
- We investigate all quality concerns to ensure our products perform to the highest standards

If the product does not perform as described on this datasheet, we will offer a refund or replacement. For full details of the Abpromise, please visit <https://www.abcam.co.jp/abpromise> or contact our technical team.

Terms and conditions

- Guarantee only valid for products bought direct from Abcam or one of our authorized distributors