

The Abpromise guarantee **Abpromise保証は、** 次のテスト済みアプリケーションにおけるab99356の使用に適用されず
 アプリケーションノートには、推奨の開始希釈率がありますが、適切な希釈率につきましてはご検討ください。

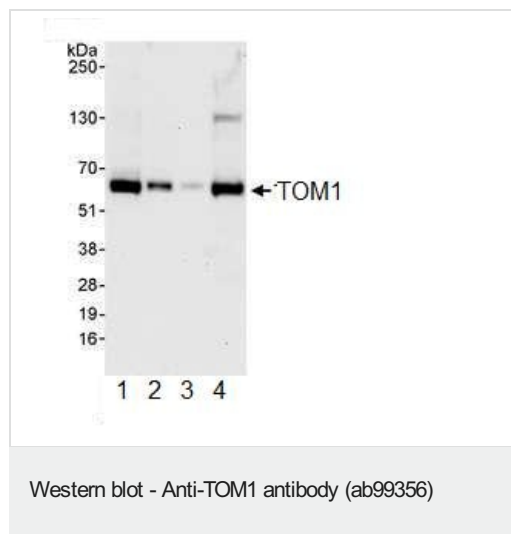
| アプリケーション | Abreviews | 特記事項 |
|----------|-----------|---|
| WB | | 1/2000 - 1/10000. Predicted molecular weight: 54 kDa. |
| IP | | Use at 2-5 µg/mg of lysate. |

ターゲット情報

関連性 Function: May be involved in intracellular trafficking. Probable association with membranes.
 Tissue specificity: Widely expressed. Highly expressed in skeletal muscle, heart, placenta and liver. Similarity: Belongs to the TOM1 family. Contains 1 GAT domain. Contains 1 VHS domain.

細胞内局在 Cytoplasm. Membrane; Peripheral membrane protein

画像



All lanes : Anti-TOM1 antibody (ab99356) at 0.04 µg/ml

Lane 1 : HeLa whole cell lysate at 50 µg

Lane 2 : HeLa whole cell lysate at 15 µg

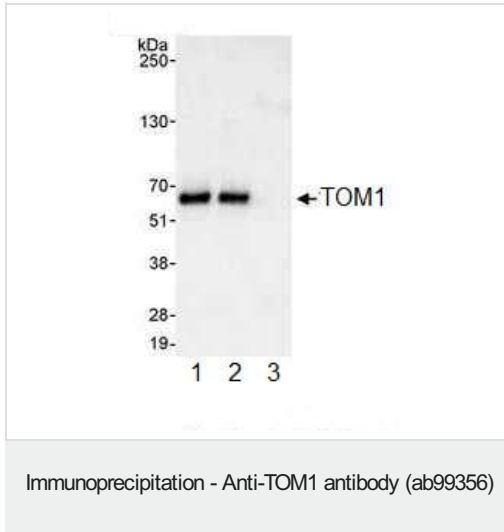
Lane 3 : HeLa whole cell lysate at 5 µg

Lane 4 : 293T whole cell lysate at 50 µg

Developed using the ECL technique.

Predicted band size: 54 kDa

Exposure time: 30 seconds



ab99356, at 1 µg/ml, detecting TOM1 in HeLa whole cell lysate by Western blot analysis following Immunoprecipitation (IP). Detection utilized ECL with a 3 second exposure.

For immunoprecipitation, ab99356 was used at 3 µg/mg lysate; 1 mg of lysate was used for IP and 20% of IP was loaded.

Lane 1; IP using **ab99355** (a rabbit anti-TOM1 antibody which recognizes an upstream epitope).

Lane 2; IP using ab99356.

Lane 3; IP using control IgG.

Please note: All products are "FOR RESEARCH USE ONLY. NOT FOR USE IN DIAGNOSTIC PROCEDURES"

Our Abpromise to you: Quality guaranteed and expert technical support

- Replacement or refund for products not performing as stated on the datasheet
- Valid for 12 months from date of delivery
- Response to your inquiry within 24 hours
- We provide support in Chinese, English, French, German, Japanese and Spanish
- Extensive multi-media technical resources to help you
- We investigate all quality concerns to ensure our products perform to the highest standards

If the product does not perform as described on this datasheet, we will offer a refund or replacement. For full details of the Abpromise, please visit <https://www.abcam.co.jp/abpromise> or contact our technical team.

Terms and conditions

- Guarantee only valid for products bought direct from Abcam or one of our authorized distributors