




Anti-TMPRSS4 antibody ab82176

3 References [画像数 1](#)

製品の概要

製品名	Anti-TMPRSS4 antibody
製品の詳細	Goat polyclonal to TMPRSS4
由来種	Goat
特異性	ab82176 is expected to recognize both reported isoforms (NP_063947.1 and NP_001077416.1).
アプリケーション	適用あり: WB
種交差性	交差種: Human
	交差が予測される動物種: Mouse 
免疫原	Synthetic peptide:
	DSTRCNADDAYQGE , corresponding to internal sequence amino acids 352-365 of Human TMPRSS4 (NP_063947.1) (or aa347-360 of NP_001077416.1).  Run BLAST with  Run BLAST with
ポジティブ・コントロール	WB: HEK-293 cell lysate.
特記事項	<p>The Life Science industry has been in the grips of a reproducibility crisis for a number of years. Abcam is leading the way in addressing this with our range of recombinant monoclonal antibodies and knockout edited cell lines for gold-standard validation. Please check that this product meets your needs before purchasing.</p> <p>If you have any questions, special requirements or concerns, please send us an inquiry and/or contact our Support team ahead of purchase. Recommended alternatives for this product can be found below, along with publications, customer reviews and Q&As</p>

製品の特性

製品の状態	Liquid
保存方法	Shipped at 4°C. Upon delivery aliquot and store at -20°C. Avoid repeated freeze / thaw cycles.
バッファー	pH: 7.30 Preservative: 0.02% Sodium azide Constituents: 0.5% Tris buffered saline, 0.5% BSA
精製度	Immunogen affinity purified

特記事項(精製)	ab82176 is purified from goat serum by ammonium sulphate precipitation followed by antigen affinity chromatography using the immunizing peptide.
ポリモノ	ポリクローナル
アイソタイプ	IgG

アプリケーション

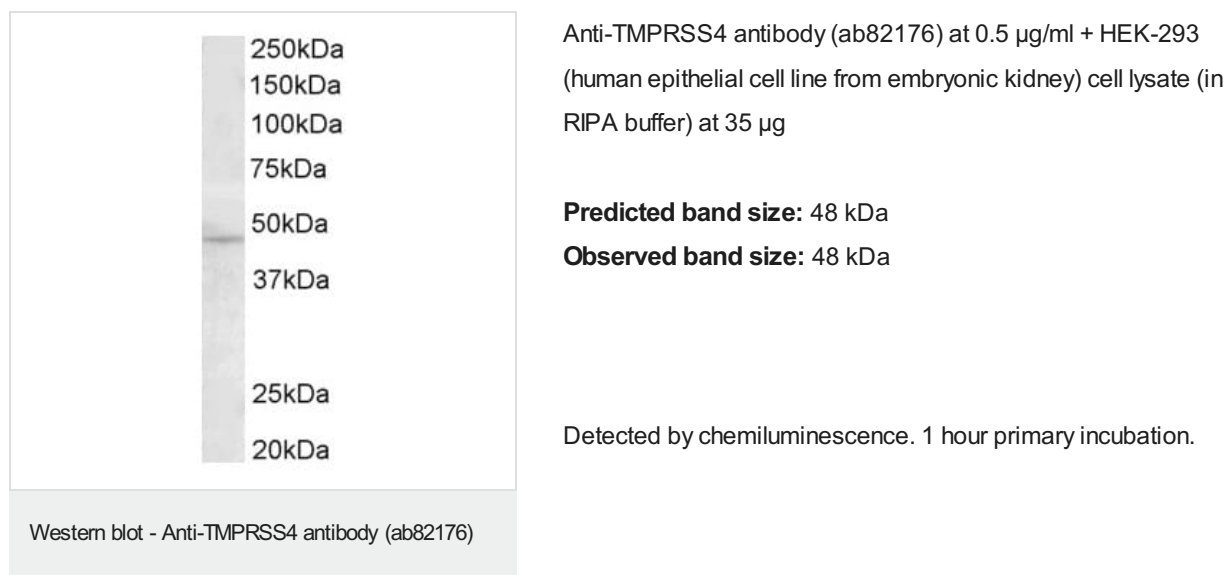
The Abpromise guarantee Abpromise保証は、次のテスト済みアプリケーションにおけるab82176の使用に適用されます
 アプリケーションノートには、推奨の開始希釈率がありますが、適切な希釈率につきましてはご検討ください。

アプリケーション	Abreviews	特記事項
WB		Use a concentration of 0.5 - 1.5 µg/ml. Predicted molecular weight: 48 kDa. 1 hour primary incubation is recommended for this product.

ターゲット情報

機能	Probable protease. Seems to be capable of activating ENaC.
組織特異性	High levels in pancreatic, gastric, colorectal and ampullary cancer. Very weak expression in normal gastrointestinal and urogenital tract.
配列類似性	Belongs to the peptidase S1 family. Contains 1 LDL-receptor class A domain. Contains 1 peptidase S1 domain. Contains 1 SRCR domain.
細胞内局在	Membrane.

画像



Please note: All products are "FOR RESEARCH USE ONLY. NOT FOR USE IN DIAGNOSTIC PROCEDURES"

Our Abpromise to you: Quality guaranteed and expert technical support

- Replacement or refund for products not performing as stated on the datasheet
- Valid for 12 months from date of delivery
- Response to your inquiry within 24 hours

- We provide support in Chinese, English, French, German, Japanese and Spanish
- Extensive multi-media technical resources to help you
- We investigate all quality concerns to ensure our products perform to the highest standards

If the product does not perform as described on this datasheet, we will offer a refund or replacement. For full details of the Abpromise, please visit <https://www.abcam.co.jp/abpromise> or contact our technical team.

Terms and conditions

- Guarantee only valid for products bought direct from Abcam or one of our authorized distributors