

Anti-TMPRSS13 antibody - Cytoplasmic domain ab59862

[4 References](#) [画像数 1](#)

製品の概要

製品名	Anti-TMPRSS13 antibody - Cytoplasmic domain
製品の詳細	Rabbit polyclonal to TMPRSS13 - Cytoplasmic domain
由来種	Rabbit
特異性	ab59862 recognizes the five forms of TMPRSS13 (581, 567, 562, 558 and 537 amino acids in length). We have a range of domain specific antibodies for this target. For a full list please see all TMPRSS13 antibodies .
アプリケーション	適用あり: WB
種交差性	交差種: Human
免疫原	Synthetic peptide based on the cytoplasmic domain of human TMPRSS13. Immunizing peptide available on request - please contact a member of staff to ask for availability
特記事項	<p>The Life Science industry has been in the grips of a reproducibility crisis for a number of years. Abcam is leading the way in addressing this with our range of recombinant monoclonal antibodies and knockout edited cell lines for gold-standard validation. Please check that this product meets your needs before purchasing.</p> <p>If you have any questions, special requirements or concerns, please send us an inquiry and/or contact our Support team ahead of purchase. Recommended alternatives for this product can be found below, along with publications, customer reviews and Q&As</p>

製品の特性

製品の状態	Liquid
保存方法	Shipped at 4°C. Store at -20°C. Stable for 12 months at -20°C.
バッファー	pH: 7.40 Preservative: 0.05% Sodium azide Constituents: PBS, 50% Glycerol, 2.9% Sodium chloride
精製度	Immunogen affinity purified
ポリクローナル	ポリクローナル
アイソタイプ	IgG

アプリケーション

The Abpromise guarantee

Abpromise保証は、次のテスト済みアプリケーションにおけるab59862の使用に適用されます

アプリケーションノートには、推奨の開始希釈率がありますが、適切な希釈率につきましてはご検討ください。

アプリケーション	Abreviews	特記事項
WB		Use at an assay dependent dilution. Predicted molecular weight: 63 kDa. A recommended starting concentration for Western blots is 1/1000 when using colorimetric substrates such as BCIP/NBT and 1/5000 for chemiluminescent substrates.

ターゲット情報

組織特異性

Isoform 1 and isoform 3 are predominantly expressed in lung, placenta, pancreas, and prostate. Isoform 3 is weakly expressed in testis and peripheral blood lymphocytes.

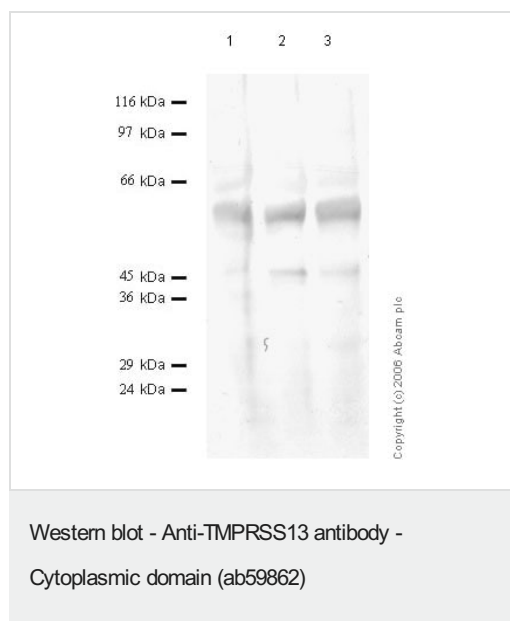
配列類似性

Belongs to the peptidase S1 family.
Contains 1 LDL-receptor class A domain.
Contains 1 peptidase S1 domain.
Contains 1 SRCR domain.

細胞内局在

Membrane.

画像



All lanes : Anti-TMPRSS13 antibody - Cytoplasmic domain (ab59862) at 1/1000 dilution

Lane 1 : Cell media from human prostate adenocarcinoma LNCaP cells (treated with SF)

Lane 2 : Cell media from human prostate adenocarcinoma LNCaP cells (treated with TPA)

Lane 3 : Cell media from human prostate adenocarcinoma LNCaP cells (treated with IL1-alpha)

Lysates/proteins at 20 µl per lane.

Predicted band size: 63 kDa

Please note: All products are "FOR RESEARCH USE ONLY. NOT FOR USE IN DIAGNOSTIC PROCEDURES"

Our Abpromise to you: Quality guaranteed and expert technical support

- Replacement or refund for products not performing as stated on the datasheet
- Valid for 12 months from date of delivery
- Response to your inquiry within 24 hours

- We provide support in Chinese, English, French, German, Japanese and Spanish
- Extensive multi-media technical resources to help you
- We investigate all quality concerns to ensure our products perform to the highest standards

If the product does not perform as described on this datasheet, we will offer a refund or replacement. For full details of the Abpromise, please visit <https://www.abcam.co.jp/abpromise> or contact our technical team.

Terms and conditions

- Guarantee only valid for products bought direct from Abcam or one of our authorized distributors