


Anti-TMLHE antibody ab97842

面格新 1

医薬用外劇物

製品の概要

製品名	Anti-TMLHE antibody
製品の詳細	Rabbit polyclonal to TMLHE
由来種	Rabbit
アプリケーション	適用あり: WB
種交差性	交差種: Human 交差が予測される動物種: Mouse, Rat, Cow 
免疫原	Recombinant fragment corresponding to Human TMLHE aa 100-400. NP_060666 Database link: Q9NVH6-1
ポジティブ・コントロール	HeLaS3 whole cells lysate; HepG2 and H1299 cells
特記事項	<p>The Life Science industry has been in the grips of a reproducibility crisis for a number of years. Abcam is leading the way in addressing this with our range of recombinant monoclonal antibodies and knockout edited cell lines for gold-standard validation. Please check that this product meets your needs before purchasing.</p> <p>If you have any questions, special requirements or concerns, please send us an inquiry and/or contact our Support team ahead of purchase. Recommended alternatives for this product can be found below, along with publications, customer reviews and Q&As</p>

製品の特性

製品の状態	Liquid
保存方法	Shipped at 4°C. Upon delivery aliquot and store at -20°C or -80°C. Avoid repeated freeze / thaw cycles.
バッファー	pH: 7.00 Preservative: 0.01% Thimerosal (merthiolate) Constituents: 1.21% Tris, 0.75% Glycine, 10% Glycerol (glycerin, glycerine)
精製度	Protein A purified
ポリ/モノ	ポリクローナル
アイソタイプ	IgG

アプリケーション

The Abpromise guarantee

Abpromise保証は、次のテスト済みアプリケーションにおけるab97842の使用に適用されます

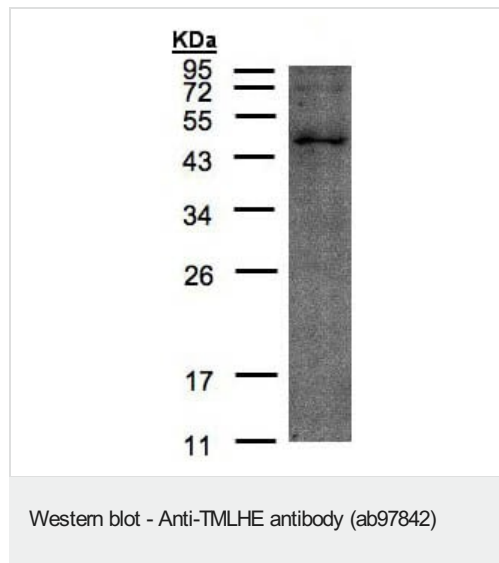
アプリケーションノートには、推奨の開始希釈率がありますが、適切な希釈率につきましてはご確認ください。

アプリケーション	Abreviews	特記事項
WB		1/100 - 1/1000. Predicted molecular weight: 50 kDa.

ターゲット情報

機能	Converts trimethyllysine (TML) into hydroxytrimethyllysine (HTML).
組織特異性	All isoforms, but isoform 8, are widely expressed in adult and fetal tissues. Isoform 8 is restricted to heart and skeletal muscle.
パスウェイ	Amine and polyamine biosynthesis; carnitine biosynthesis.
関連疾患	Autism, X-linked 6
配列類似性	Belongs to the gamma-BBH/TMLD family.
細胞内局在	Mitochondrion matrix.

画像



Anti-TMLHE antibody (ab97842) at 1/200 dilution + HeLaS3 whole cell lysate at 30 µg

Predicted band size: 50 kDa

12% SDS PAGE

Please note: All products are "FOR RESEARCH USE ONLY. NOT FOR USE IN DIAGNOSTIC PROCEDURES"

Our Abpromise to you: Quality guaranteed and expert technical support

- Replacement or refund for products not performing as stated on the datasheet
- Valid for 12 months from date of delivery
- Response to your inquiry within 24 hours
- We provide support in Chinese, English, French, German, Japanese and Spanish

- Extensive multi-media technical resources to help you
- We investigate all quality concerns to ensure our products perform to the highest standards

If the product does not perform as described on this datasheet, we will offer a refund or replacement. For full details of the Abpromise, please visit <https://www.abcam.co.jp/abpromise> or contact our technical team.

Terms and conditions

- Guarantee only valid for products bought direct from Abcam or one of our authorized distributors