

Anti-TMEM59 antibody ab105417

画像数 3

製品の概要

製品名	Anti-TMEM59 antibody
製品の詳細	Rabbit polyclonal to TMEM59
由来種	Rabbit
特異性	Multiple isoforms of TMEM59 are known to exist. This antibody is predicted to not cross-react with other TMEM family members.
アプリケーション	適用あり: WB, IHC-P
種交差性	交差種: Human
免疫原	A 16 amino acid peptide near amino terminus of Human TMEM59 (NP_004863)
ポジティブ・コントロール	Human Kidney Tissue Lysate
特記事項	<p>The Life Science industry has been in the grips of a reproducibility crisis for a number of years. Abcam is leading the way in addressing this with our range of recombinant monoclonal antibodies and knockout edited cell lines for gold-standard validation. Please check that this product meets your needs before purchasing.</p> <p>If you have any questions, special requirements or concerns, please send us an inquiry and/or contact our Support team ahead of purchase. Recommended alternatives for this product can be found below, along with publications, customer reviews and Q&As</p>

製品の特性

製品の状態	Liquid
保存方法	Shipped at 4°C. Store at +4°C.
バッファー	<p>pH: 7.2</p> <p>Preservative: 0.02% Sodium azide</p> <p>Constituent: PBS</p>
精製度	Immunogen affinity purified
ポリ/モノ	ポリクローナル
アイソタイプ	IgG

アプリケーション

The Abpromise guarantee

Abpromise保証は、次のテスト済みアプリケーションにおけるab105417の使用に適用されます

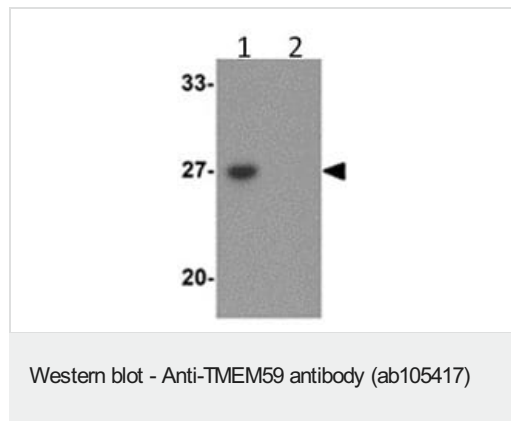
アプリケーションノートには、推奨の開始希釈率がありますが、適切な希釈率につきましてはご確認ください。

アプリケーション	Abreviews	特記事項
IF		Use a concentration of 20 µg/ml.
WB		Use a concentration of 1 - 2 µg/ml. Predicted molecular weight: 36 kDa.
IHC-P		Use a concentration of 2.5 µg/ml.

ターゲット情報

機能	Modulates the O-glycosylation and complex N-glycosylation steps occurring during the Golgi maturation of several proteins such as APP, BACE1, SEAP or PRNP. Inhibits APP transport to the cell surface and further shedding.
配列類似性	Belongs to the TMEM59 family.
翻訳後修飾	N-glycosylated.
細胞内局在	Golgi apparatus membrane.

画像



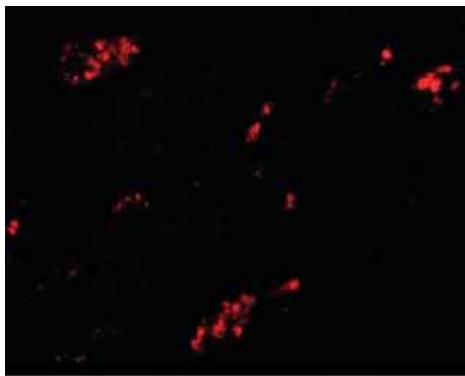
All lanes : Anti-TMEM59 antibody (ab105417) at 1 µg/ml

Lane 1 : Human kidney tissue lysate

Lane 2 : Human kidney tissue lysate with blocking peptide

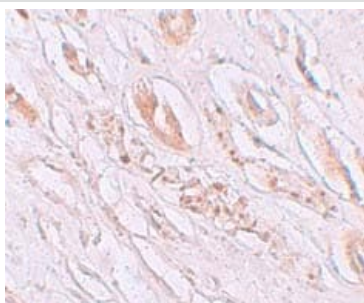
Lysates/proteins at 15 µg per lane.

Predicted band size: 36 kDa



Immunofluorescence of TMEM59 in Human kidney tissue with ab105417 at 20 ug/mL.

Immunofluorescence - Anti-TMEM59 antibody
(ab105417)



Immunohistochemistry of TMEM59 in human kidney tissue with ab105417 at 2.5 µg/ml.

Immunohistochemistry paraffin embedded sections -
Anti-TMEM59 antibody (ab105417)

Please note: All products are "FOR RESEARCH USE ONLY. NOT FOR USE IN DIAGNOSTIC PROCEDURES"

Our Abpromise to you: Quality guaranteed and expert technical support

- Replacement or refund for products not performing as stated on the datasheet
- Valid for 12 months from date of delivery
- Response to your inquiry within 24 hours
- We provide support in Chinese, English, French, German, Japanese and Spanish
- Extensive multi-media technical resources to help you
- We investigate all quality concerns to ensure our products perform to the highest standards

If the product does not perform as described on this datasheet, we will offer a refund or replacement. For full details of the Abpromise, please visit <https://www.abcam.co.jp/abpromise> or contact our technical team.

Terms and conditions

- Guarantee only valid for products bought direct from Abcam or one of our authorized distributors