


Anti-TMEM16A antibody [SP31] ab64085

リコンビナント RabMAb[®]

★★★★☆ **2 Abreviews** **49 References** **画像数 7**

製品の概要

製品名	Anti-TMEM16A antibody [SP31]
製品の詳細	Rabbit monoclonal [SP31] to TMEM16A
由来種	Rabbit
アプリケーション	適用あり: IHC-P, Flow Cyt (Intra), ICC/IF, WB
種交差性	交差種: Human 交差が予測される動物種: Cynomolgus monkey 
免疫原	Synthetic peptide within Human TMEM16A aa 400-500. The exact sequence is proprietary. Database link: Q5XXA6
ポジティブ・コントロール	IHC-P: Human GIST tumor, Human SBG from CF patients, Human surface epithelium tissue Flow Cyt (intra): PC-3 cells. WB: PC-3 whole cell lysate, Capan-1 whole cell lysate. ICC/IF: PC-3 (human prostate adenocarcinoma epithelial cell)
特記事項	ab64085 was switched from a hybridoma to recombinant production method on 23rd July 2019. This product is a recombinant monoclonal antibody, which offers several advantages including: - High batch-to-batch consistency and reproducibility - Improved sensitivity and specificity - Long-term security of supply - Animal-free production For more information see here . Our RabMAb [®] technology is a patented hybridoma-based technology for making rabbit monoclonal antibodies. For details on our patents, please refer to RabMAb[®] patents . This product is FOR RESEARCH USE ONLY. For commercial use, please contact partnerships@abcam.com.

製品の特性

製品の状態	Liquid
保存方法	Shipped at 4°C. Upon delivery aliquot and store at -20°C. Avoid freeze / thaw cycles.
バッファー	pH: 7.20 Preservative: 0.1% Sodium azide

	Constituents: 1% BSA, PBS
精製度	Protein A purified
ポリ/モノ	モノクローナル
クローン名	SP31
アイソタイプ	IgG

アプリケーション

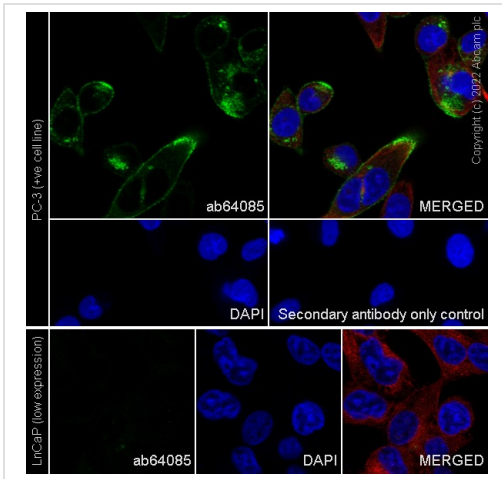
The Abpromise guarantee **Abpromise保証は、次のテスト済みアプリケーションにおけるab64085の使用に適用されず**
 アプリケーションノートには、推奨の開始希釈率がありますが、適切な希釈率につきましてはご検討ください。

アプリケーション	Abreviews	特記事項
IHC-P		1/100.
Flow Cyt (Intra)		Use at an assay dependent concentration.
ICC/IF		Use at an assay dependent concentration.
WB	★★★★☆ (2)	1/1000. Detects a band of approximately 130, 260 kDa (predicted molecular weight: 114 kDa). PMID: 22685202.

ターゲット情報

機能	Acts as a calcium-activated chloride channel. Required for normal tracheal development.
組織特異性	Broadly expressed with higher levels in liver and skeletal muscle.
配列類似性	Belongs to the anoctamin family.
ドメイン	The region spanning the fifth and sixth transmembrane domains probably forms the pore-forming region.
細胞内局在	Cell membrane. Cytoplasm.

画像



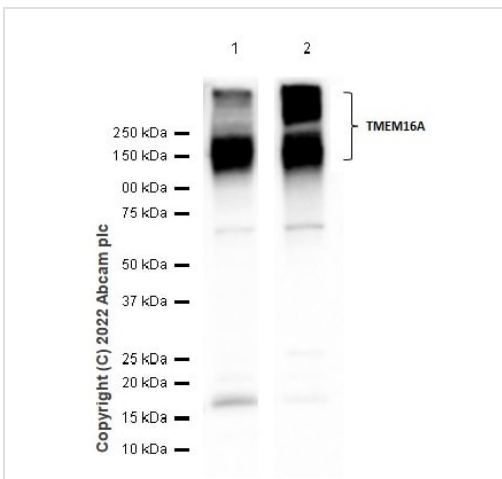
Immunocytochemistry/ Immunofluorescence - Anti-TMEM16A antibody [SP31] (ab64085)

ab64085 staining TMEM16A in PC-3 (human prostate adenocarcinoma epithelial cell) cells. The cells were fixed with 4% formaldehyde, permeabilized in 100% methanol. The cells were then incubated with ab64085 at 1/20 dilution, followed by secondary antibody **ab150077** AlexaFluor®488 Goat anti-Rabbit secondary at 1/1000 dilution (Green). **ab195889**, Anti-alpha Tubulin antibody [DM1A] - Microtubule Marker (Alexa Fluor® 594) was used for counterstain at 1/200 dilution (Red). Nuclear DNA was labelled in blue with DAPI.

Confocal image showing membranous and cytoplasmic staining in PC-3 cell line.

Low expression control: LnCaP (PMID: 29899325)

Image was taken with a confocal microscope (Leica-Microsystems, TCS SP8).



Western blot - Anti-TMEM16A antibody [SP31] (ab64085)

All lanes : Anti-TMEM16A antibody [SP31] (ab64085) at 1/1000 dilution

Lane 1 : PC-3 (Human prostate adenocarcinoma epithelial cell) whole cell lysate

Lane 2 : Capan-1 (Human pancreas adenocarcinoma epithelial cell) whole cell lysate

Lysates/proteins at 20 µg per lane.

Secondary

All lanes : Goat Anti-Rabbit IgG H&L (HRP) (**ab97051**) at 1/20000 dilution

Predicted band size: 114 kDa

Observed band size: 130,260 kDa

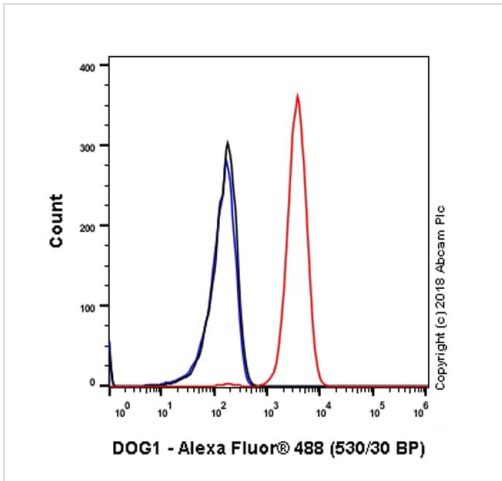
Blocking and diluting buffer and concentration: 5% NFDN/TBST

Exposure time:

Lane 1: 20 seconds

Lane 2: 10 seconds

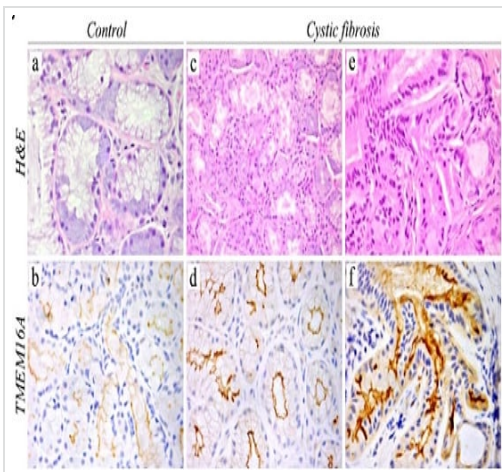
The observed molecular weights are consistent with PMID: 22685202.



Flow Cytometry (Intracellular) - Anti-TMEM16A antibody [SP31] (ab64085)

Intracellular Flow Cytometry analysis of PC-3 (Human prostate adenocarcinoma epithelial cell) cells labeling TMEM16A with purified ab64085. (red). Cells were fixed with 4% paraformaldehyde and permeabilised with 90% methanol. A Goat anti rabbit IgG (Alexa Fluor® 488, **ab150077**) secondary antibody. Isotype control - Rabbit monoclonal IgG (**ab172730**) / Black. Unlabeled control - Unlabelled cells / blue.

This image was generated from the hybridoma version.



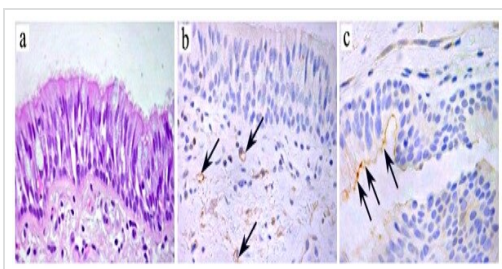
Immunohistochemistry (Formalin/PFA-fixed paraffin-embedded sections) - Anti-TMEM16A antibody [SP31] (ab64085)

This image is taken from Upregulation of TMEM16A Protein in Bronchial Epithelial Cells by Bacterial Pycyanin.

TMEM16A detected in paraffin-embedded sections of human submucosal glands from CF patients and control samples.

TMEM16A expression was modest in non-CF submucosal glands of non-CF samples (b) but markedly increased in tissues from CF patients (d), with a particularly strong signal (f) in histologically altered glands (e). Magnification: X630 in a, X400 in b-f. Images 4Aa and 4Ba,c,e show hematoxylin and eosin staining.

This image was generated from the hybridoma version.

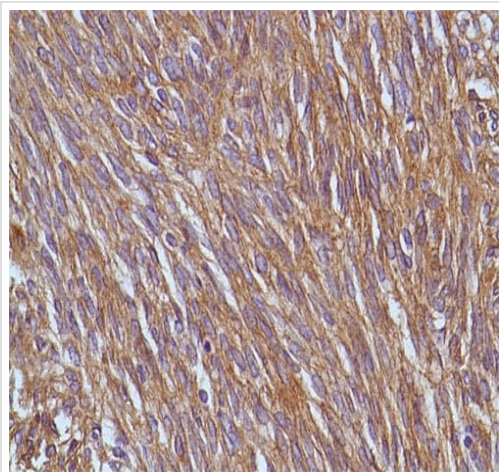


Immunohistochemistry (Formalin/PFA-fixed paraffin-embedded sections) - Anti-TMEM16A antibody [SP31] (ab64085)

This image is taken from Upregulation of TMEM16A Protein in Bronchial Epithelial Cells by Bacterial Pycyanin.

ab64085 showing expression of TMEM16A in human surface epithelium tissue. TMEM16A staining was mostly absent (b), and sometimes scanty (c) in the respiratory epithelium lining bronchi or bronchioles from CF patients (c, arrows). A weak expression was also detectable in microvessels of peri-bronchial connective tissue (b, arrows). Magnification: X400.

This image was generated from the hybridoma version.







Immunohistochemical analysis of Human Gastrointestinal Stromal Tumor tissue labelling TMEM16A with ab64085.

This image was generated from the hybridoma version.

Immunohistochemistry (Formalin/PFA-fixed paraffin-embedded sections) - Anti-TMEM16A antibody [SP31] (ab64085)

Why choose a recombinant antibody?

 <p>Research with confidence Consistent and reproducible results</p>	 <p>Long-term and scalable supply Recombinant technology</p>
 <p>Success from the first experiment Confirmed specificity</p>	 <p>Ethical standards compliant Animal-free production</p>

Anti-TMEM16A antibody [SP31] (ab64085)

Please note: All products are "FOR RESEARCH USE ONLY. NOT FOR USE IN DIAGNOSTIC PROCEDURES"

Our Abpromise to you: Quality guaranteed and expert technical support

- Replacement or refund for products not performing as stated on the datasheet
- Valid for 12 months from date of delivery
- Response to your inquiry within 24 hours
- We provide support in Chinese, English, French, German, Japanese and Spanish
- Extensive multi-media technical resources to help you
- We investigate all quality concerns to ensure our products perform to the highest standards

If the product does not perform as described on this datasheet, we will offer a refund or replacement. For full details of the Abpromise, please visit <https://www.abcam.co.jp/abpromise> or contact our technical team.

Terms and conditions

- Guarantee only valid for products bought direct from Abcam or one of our authorized distributors