


### Anti-TMEM16A antibody ab53212

★★★★☆ [5 Abreviews](#) [101 References](#) [画像数 2](#)

#### 製品の概要

製品名	Anti-TMEM16A antibody
製品の詳細	Rabbit polyclonal to TMEM16A
由来種	Rabbit
アプリケーション	<b>適用あり:</b> IHC-P
種交差性	<b>交差種:</b> Human <b>交差が予測される動物種:</b> Mouse, Rat 
免疫原	Synthetic peptide within Human TMEM16A aa 400-500. The exact sequence is proprietary. Database link: <a href="#">Q5XXA6</a>
特記事項	<p><b>This product is FOR RESEARCH USE ONLY. For commercial use, please contact <a href="mailto:partnerships@abcam.com">partnerships@abcam.com</a>.</b></p> <p>The Life Science industry has been in the grips of a reproducibility crisis for a number of years. Abcam is leading the way in addressing this with our range of recombinant monoclonal antibodies and knockout edited cell lines for gold-standard validation. Please check that this product meets your needs before purchasing.</p> <p>If you have any questions, special requirements or concerns, please send us an inquiry and/or contact our Support team ahead of purchase. Recommended alternatives for this product can be found below, along with publications, customer reviews and Q&amp;As</p>

#### 製品の特性

製品の状態	Liquid
保存方法	Shipped at 4°C. Upon delivery aliquot and store at -20°C. Avoid freeze / thaw cycles.
バッファー	pH: 7.60 Preservative: 0.1% Sodium azide Constituents: PBS, 1% BSA
精製度	Immunogen affinity purified
ポリ/モノ	ポリクローナル
アイソタイプ	IgG

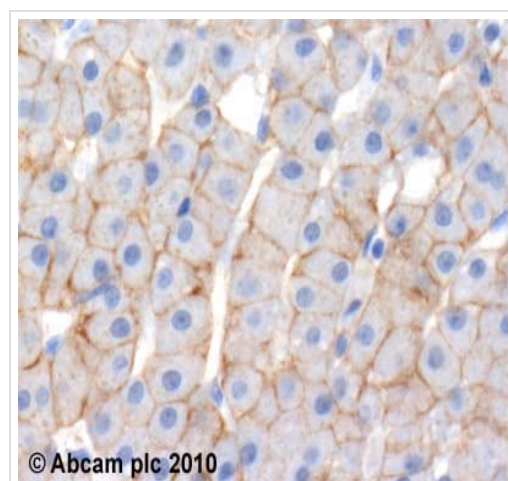
**The Abpromise guarantee** Abpromise保証は、 次のテスト済みアプリケーションにおけるab53212の使用に適用されます  
アプリケーションノートには、推奨の開始希釈率がありますが、適切な希釈率につきましてはご検討ください。

アプリケーション	Abreviews	特記事項
IHC-P	★★★★★ (2)	1/100.

## ターゲット情報

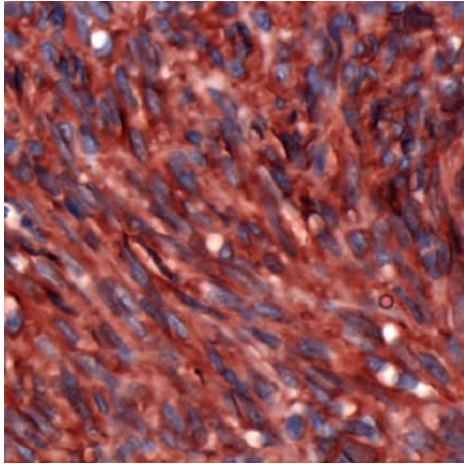
機能	Acts as a calcium-activated chloride channel. Required for normal tracheal development.
組織特異性	Broadly expressed with higher levels in liver and skeletal muscle.
配列類似性	Belongs to the anoctamin family.
ドメイン	The region spanning the fifth and sixth transmembrane domains probably forms the pore-forming region.
細胞内局在	Cell membrane. Cytoplasm.

## 画像



Immunohistochemistry (Formalin/PFA-fixed paraffin-embedded sections) - Anti-TMEM16A antibody (ab53212)

ab53212 (2µg/ml) staining TMEM16A in human liver (left panel) using an automated system (DAKO Autostainer Plus). Using this protocol there is strong staining of hepatocyte cell membrane. Sections were rehydrated and antigen retrieved with the Dako 3 in 1 AR buffer EDTA pH 9.0 in a DAKO PT link. Slides were peroxidase blocked in 3% H<sub>2</sub>O<sub>2</sub> in methanol for 10 mins. They were then blocked with Dako Protein block for 10 minutes (containing casein 0.25% in PBS) then incubated with primary antibody for 20 min and detected with Dako envision flex amplification kit for 30 minutes. Colorimetric detection was completed with Diaminobenzidine for 5 minutes. Slides were counterstained with Haematoxylin and coverslipped under DePeX. Please note that, for manual staining, optimization of primary antibody concentration and incubation time is recommended. Signal amplification may be required.



Immunohistochemistry (Formalin/PFA-fixed paraffin-embedded sections) analysis of human gastrointestinal stromal tumor labeling TMEM16A with ab53212.

Immunohistochemistry (Formalin/PFA-fixed paraffin-embedded sections) - Anti-TMEM16A antibody (ab53212)

**Please note:** All products are "FOR RESEARCH USE ONLY. NOT FOR USE IN DIAGNOSTIC PROCEDURES"

### Our Abpromise to you: Quality guaranteed and expert technical support

---

- Replacement or refund for products not performing as stated on the datasheet
- Valid for 12 months from date of delivery
- Response to your inquiry within 24 hours
- We provide support in Chinese, English, French, German, Japanese and Spanish
- Extensive multi-media technical resources to help you
- We investigate all quality concerns to ensure our products perform to the highest standards

If the product does not perform as described on this datasheet, we will offer a refund or replacement. For full details of the Abpromise, please visit <https://www.abcam.co.jp/abpromise> or contact our technical team.

### Terms and conditions

---

- Guarantee only valid for products bought direct from Abcam or one of our authorized distributors