

# Anti-TMEM164 antibody ab122510

画像数 3

### 製品の概要

---

製品名	Anti-TMEM164 antibody
製品の詳細	Rabbit polyclonal to TMEM164
由来種	Rabbit
アプリケーション	<b>適用あり:</b> ICC/IF, IHC-P, WB
種交差性	<b>交差種:</b> Human
免疫原	antigen, corresponding to amino acids 1-38 (MSRYSYQSLL DWLYGGVDPS FAGNGGPDCA AFLSWQQR) of Human TMEM164.

 [Run BLAST with ExPASy](#)  [Run BLAST with NCBI](#)

**ポジティブ・コントロール** Human lung tissue; RT4 and U251 MG cell lysates.

**特記事項** The Life Science industry has been in the grips of a reproducibility crisis for a number of years. Abcam is leading the way in addressing this with our range of recombinant monoclonal antibodies and knockout edited cell lines for gold-standard validation. Please check that this product meets your needs before purchasing.

If you have any questions, special requirements or concerns, please send us an inquiry and/or contact our Support team ahead of purchase. Recommended alternatives for this product can be found below, along with publications, customer reviews and Q&As

### 製品の特性

---

製品の状態	Liquid
保存方法	Shipped at 4°C. Upon delivery aliquot and store at -20°C. Avoid repeated freeze / thaw cycles.
バッファー	pH: 7.20 Preservative: 0.02% Sodium azide Constituents: 40% Glycerol (glycerin, glycerine), 59% PBS
精製度	Immunogen affinity purified
ポリ/モノ	ポリクローナル
アイソタイプ	IgG

### アプリケーション

---

## The Abpromise guarantee

**Abpromise保証は、次のテスト済みアプリケーションにおけるab122510の使用に適用されます**

アプリケーションノートには、推奨の開始希釈率がありますが、適切な希釈率につきましてはご検討ください。

アプリケーション	Abreviews	特記事項
ICC/IF		Use a concentration of 0.25 - 2 µg/ml.
IHC-P		1/50 - 1/200. Perform heat mediated antigen retrieval with citrate buffer pH 6 before commencing with IHC staining protocol. pH6.
WB		Use a concentration of 0.04 - 0.4 µg/ml.

## ターゲット情報

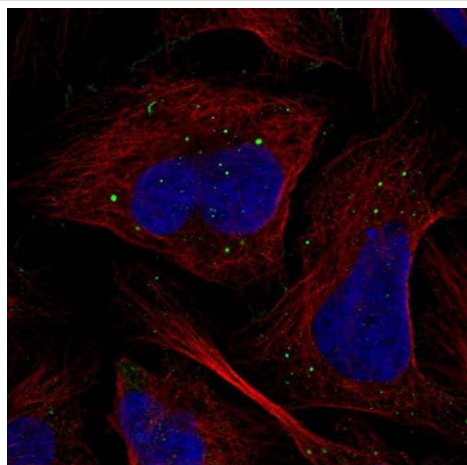
### 配列類似性

Belongs to the TMEM164 family.

### 細胞内局在

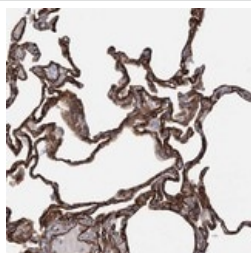
Membrane.

## 画像



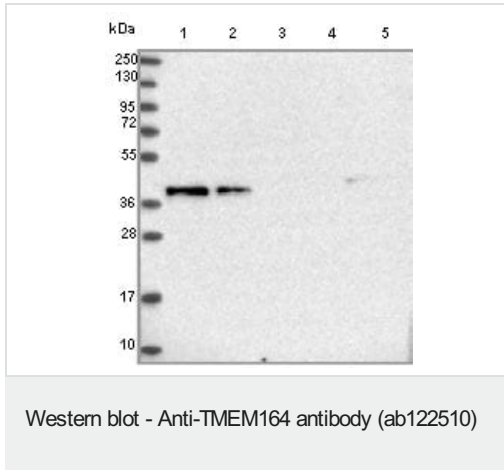
Immunocytochemistry/ Immunofluorescence - Anti-TMEM164 antibody (ab122510)

Immunofluorescent staining of Human cell line U-2 OS shows positivity in vesicles. Recommended concentration of ab122510 1-4 µg/ml. Cells treated with PFA/Triton X-100.



Immunohistochemistry (Formalin/PFA-fixed paraffin-embedded sections) - Anti-TMEM164 antibody (ab122510)

ab122510 at 1/150 dilution staining TMEM164 in Paraffin-embedded Human Lung tissue by Immunohistochemistry.



**All lanes :** Anti-TMEM164 antibody (ab122510) at 1/250 dilution

**Lane 1 :** RT4 lysate

**Lane 2 :** U251 MG lysate

**Lane 3 :** Human plasma

**Lane 4 :** Human liver lysate

**Lane 5 :** Human tonsil lysate

Developed using the ECL technique.

**Please note:** All products are "FOR RESEARCH USE ONLY. NOT FOR USE IN DIAGNOSTIC PROCEDURES"

### Our Abpromise to you: Quality guaranteed and expert technical support

---

- Replacement or refund for products not performing as stated on the datasheet
- Valid for 12 months from date of delivery
- Response to your inquiry within 24 hours
- We provide support in Chinese, English, French, German, Japanese and Spanish
- Extensive multi-media technical resources to help you
- We investigate all quality concerns to ensure our products perform to the highest standards

If the product does not perform as described on this datasheet, we will offer a refund or replacement. For full details of the Abpromise, please visit <https://www.abcam.co.jp/abpromise> or contact our technical team.

### Terms and conditions

---

- Guarantee only valid for products bought direct from Abcam or one of our authorized distributors