

Anti-TMC6 antibody ab67325

★★★★★ [1 Abreviews](#) [画像数 1](#)

製品の概要

製品名	Anti-TMC6 antibody
製品の詳細	Rabbit polyclonal to TMC6
由来種	Rabbit
アプリケーション	適用あり: WB
種交差性	交差種: Mouse
免疫原	a 14 amino acid synthetic peptide from near the amino terminus of human TMC6.
ポジティブ・コントロール	WB: A20 cell lysate
特記事項	<p>The Life Science industry has been in the grips of a reproducibility crisis for a number of years. Abcam is leading the way in addressing this with our range of recombinant monoclonal antibodies and knockout edited cell lines for gold-standard validation. Please check that this product meets your needs before purchasing.</p> <p>If you have any questions, special requirements or concerns, please send us an inquiry and/or contact our Support team ahead of purchase. Recommended alternatives for this product can be found below, along with publications, customer reviews and Q&As</p>

製品の特性

製品の状態	Liquid
保存方法	Shipped at 4°C. Store at +4°C.
バッファー	pH: 7.2 Preservative: 0.02% Sodium azide Constituent: PBS
精製度	Immunogen affinity purified
ポリ/モノ	ポリクローナル
アイソタイプ	IgG

アプリケーション

The Abpromise guarantee **Abpromise保証は、次のテスト済みアプリケーションにおけるab67325の使用に適用されます**
 アプリケーションノートには、推奨の開始希釈率がありますが、適切な希釈率につきましてはご検討ください。

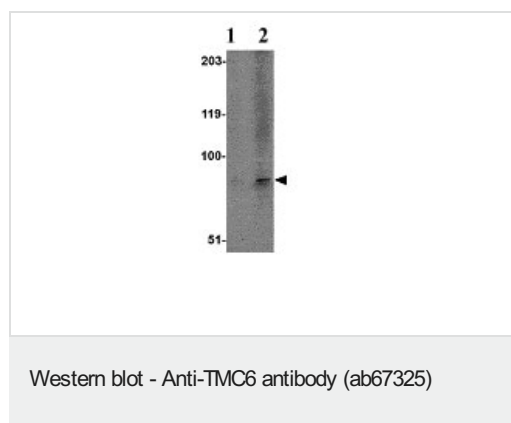
アプリケーション	Abreviews	特記事項
WB		Use a concentration of 1 - 2 µg/ml. Detects a band of approximately 90 kDa (predicted molecular weight: 90 kDa).

ターゲット情報

関連性 Defects in TMC6 are a cause of epidermodysplasia verruciformis, a rare autosomal recessive genodermatosis associated with a high risk of skin carcinoma that results from an abnormal susceptibility to infection by specific human papillomaviruses. Infection leads to persistent wart-like or macular lesions. TMC6 is expressed in placenta, prostate, testis, activated T-lymphocytes and lymphokine-activated killer (LAK) lymphocytes. There are four named isoforms.

細胞内局在 Endoplasmic reticulum membrane; Multi-pass membrane protein

画像



Lane 1 : Anti-TMC6 antibody (ab67325) at 1 µg/ml

Lane 2 : Anti-TMC6 antibody (ab67325) at 2 µg/ml

All lanes : A20 cell lysate

Lysates/proteins at 15 µg per lane.

Predicted band size: 90 kDa

Observed band size: 90 kDa

Please note: All products are "FOR RESEARCH USE ONLY. NOT FOR USE IN DIAGNOSTIC PROCEDURES"

Our Abpromise to you: Quality guaranteed and expert technical support

- Replacement or refund for products not performing as stated on the datasheet
- Valid for 12 months from date of delivery
- Response to your inquiry within 24 hours
- We provide support in Chinese, English, French, German, Japanese and Spanish
- Extensive multi-media technical resources to help you
- We investigate all quality concerns to ensure our products perform to the highest standards

If the product does not perform as described on this datasheet, we will offer a refund or replacement. For full details of the Abpromise, please visit <https://www.abcam.co.jp/abpromise> or contact our technical team.

Terms and conditions

- Guarantee only valid for products bought direct from Abcam or one of our authorized distributors