

Anti-TLX1 antibody ab105496

★☆☆☆☆ **1 Abreviews** [画像数 1](#)

製品の概要

製品名	Anti-TLX1 antibody
製品の詳細	Rabbit polyclonal to TLX1
由来種	Rabbit
アプリケーション	適用あり: WB
種交差性	交差種: Mouse
免疫原	Synthetic peptide corresponding to Mouse TLX1 aa 1-100 conjugated to keyhole limpet haemocyanin. (Peptide available as ab125503)
ポジティブ・コントロール	This antibody gave a positive signal in Mouse Hippocampus tissue lysate.
特記事項	<p>The Life Science industry has been in the grips of a reproducibility crisis for a number of years. Abcam is leading the way in addressing this with our range of recombinant monoclonal antibodies and knockout edited cell lines for gold-standard validation. Please check that this product meets your needs before purchasing.</p> <p>If you have any questions, special requirements or concerns, please send us an inquiry and/or contact our Support team ahead of purchase. Recommended alternatives for this product can be found below, along with publications, customer reviews and Q&As</p>

製品の特性

製品の状態	Liquid
保存方法	Shipped at 4°C. Store at +4°C short term (1-2 weeks). Upon delivery aliquot. Store at -20°C or -80°C. Avoid freeze / thaw cycle.
バッファー	<p>pH: 7.40</p> <p>Preservative: 0.02% Sodium azide</p> <p>Constituent: PBS</p> <p>Batches of this product that have a concentration < 1mg/ml may have BSA added as a stabilising agent. If you would like information about the formulation of a specific lot, please contact our scientific support team who will be happy to help.</p>
精製度	Immunogen affinity purified
ポリ/モノ	ポリクローナル

アプリケーション

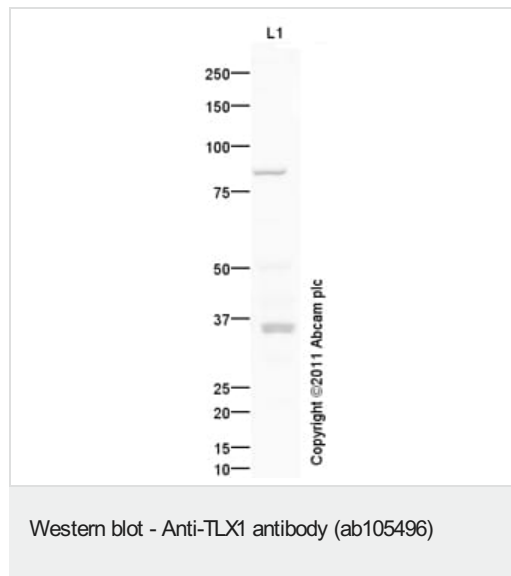
The Abpromise guarantee Abpromise保証は、 次のテスト済みアプリケーションにおけるab105496の使用に適用されます
アプリケーションノートには、推奨の開始希釈率がありますが、適切な希釈率につきましてはご検討ください。

アプリケーション	Abreviews	特記事項
WB		Use a concentration of 1 µg/ml. Detects a band of approximately 35 kDa (predicted molecular weight: 35 kDa).

ターゲット情報

機能	Controls the genesis of the spleen. Binds to the DNA sequence 5'-GGCGGTAAGTGG-3'.
関連疾患	Note=A chromosomal aberration involving TLX1 may be a cause of a form of T-cell acute lymphoblastic leukemia (T-ALL). Translocation t(10;14)(q24;q11) with TCRD.
配列類似性	Contains 1 homeobox DNA-binding domain.
細胞内局在	Nucleus.

画像



Anti-TLX1 antibody (ab105496) at 1 µg/ml + Mouse Hippocampus
Tissue Lysate at 10 µg

Secondary

Goat Anti-Rabbit IgG H&L (HRP) preadsorbed ([ab97080](#)) at
1/5000 dilution

Developed using the ECL technique.

Performed under reducing conditions.

Predicted band size: 35 kDa

Observed band size: 35 kDa

Additional bands at: 85 kDa. We are unsure as to the identity of these extra bands.

Exposure time: 1 minute

Please note: All products are "FOR RESEARCH USE ONLY. NOT FOR USE IN DIAGNOSTIC PROCEDURES"

Our Abpromise to you: Quality guaranteed and expert technical support

- Replacement or refund for products not performing as stated on the datasheet
- Valid for 12 months from date of delivery
- Response to your inquiry within 24 hours

- We provide support in Chinese, English, French, German, Japanese and Spanish
- Extensive multi-media technical resources to help you
- We investigate all quality concerns to ensure our products perform to the highest standards

If the product does not perform as described on this datasheet, we will offer a refund or replacement. For full details of the Abpromise, please visit <https://www.abcam.co.jp/abpromise> or contact our technical team.

Terms and conditions

- Guarantee only valid for products bought direct from Abcam or one of our authorized distributors