


### Anti-TLR7 antibody ab113524

★★★★★ [1 Abreviews](#) [2 References](#) [画像数 3](#)

#### 製品の概要

製品名	Anti-TLR7 antibody
製品の詳細	Rabbit polyclonal to TLR7
由来種	Rabbit
アプリケーション	<b>適用あり:</b> WB, IHC-P
種交差性	<b>交差種:</b> Human, Chimpanzee, Monkey <b>交差が予測される動物種:</b> Mouse, Rat, Horse, Cow, Dog 
免疫原	Synthetic peptide corresponding to a region within amino acids 900-950 of Human TLR7, conjugated to KLH.
ポジティブ・コントロール	Human lung and placenta tissues; Ramos cell lysate
特記事項	<p>The Life Science industry has been in the grips of a reproducibility crisis for a number of years. Abcam is leading the way in addressing this with our range of recombinant monoclonal antibodies and knockout edited cell lines for gold-standard validation. Please check that this product meets your needs before purchasing.</p> <p>If you have any questions, special requirements or concerns, please send us an inquiry and/or contact our Support team ahead of purchase. Recommended alternatives for this product can be found below, along with publications, customer reviews and Q&amp;As</p>

#### 製品の特性

製品の状態	Liquid
保存方法	Shipped at 4°C. Store at +4°C short term (1-2 weeks). Upon delivery aliquot. Store at -20°C long term. Avoid freeze / thaw cycle.
バッファー	Preservative: 0.05% Sodium azide Constituents: 99% PBS, 0.05% BSA
精製度	Protein G purified
ポリ/モノ	ポリクローナル
アイソタイプ	IgG

#### アプリケーション

## The Abpromise guarantee

**Abpromise保証は、次のテスト済みアプリケーションにおけるab113524の使用に適用されます**

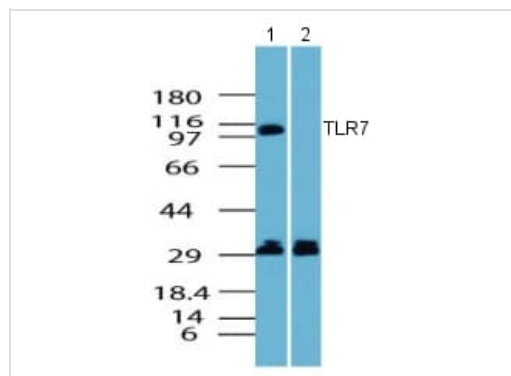
アプリケーションノートには、推奨の開始希釈率がありますが、適切な希釈率につきましてはご検討ください。

アプリケーション	Abreviews	特記事項
WB		Use a concentration of 0.5 - 2 µg/ml. Predicted molecular weight: 121 kDa.
IHC-P	★★★★★ (1)	Use a concentration of 10 µg/ml.

## ターゲット情報

機能	Key component of innate and adaptive immunity. TLRs (Toll-like receptors) control host immune response against pathogens through recognition of molecular patterns specific of microorganisms. TLR7 is a nucleotide-sensing TLR which is activated by single-stranded RNA. Acts via MYD88 and TRAF6, leading to NF-kappa-B activation, cytokine secretion and the inflammatory response.
組織特異性	Detected in brain, placenta, spleen, stomach, small intestine, lung and in plasmacytoid pre-dendritic cells.
配列類似性	Belongs to the Toll-like receptor family. Contains 27 LRR (leucine-rich) repeats. Contains 1 TIR domain.
細胞内局在	Endoplasmic reticulum membrane. Endosome. Lysosome. Cytoplasmic vesicle > phagosome. Relocalizes from endoplasmic reticulum to endosome and lysosome upon stimulation with agonist.

## 画像



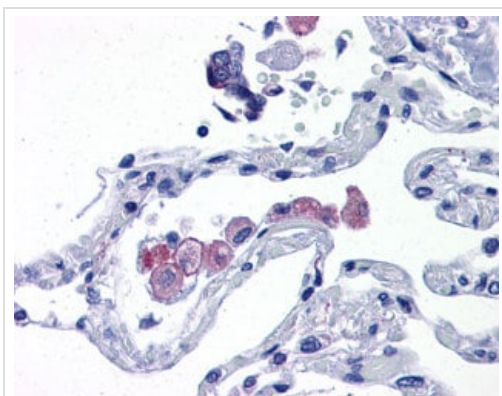
Western blot - Anti-TLR7 antibody (ab113524)

**All lanes :** Anti-TLR7 antibody (ab113524) at 1 µg/ml

**Lane 1 :** Ramos cell lysate

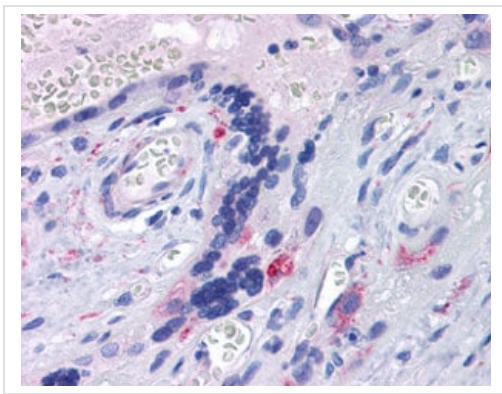
**Lane 2 :** Ramos cell lysate with immunizing peptide

**Predicted band size:** 121 kDa



ab113524, at 10 µg/ml, staining TLR7 in formalin fixed, paraffin embedded Human lung tissue by immunohistochemistry.

Immunohistochemistry (Formalin/PFA-fixed paraffin-embedded sections) - Anti-TLR7 antibody (ab113524)



ab113524, at 10 µg/ml, staining TLR7 in formalin fixed, paraffin embedded Human placenta tissue by immunohistochemistry.

Immunohistochemistry (Formalin/PFA-fixed paraffin-embedded sections) - Anti-TLR7 antibody (ab113524)

**Please note:** All products are "FOR RESEARCH USE ONLY. NOT FOR USE IN DIAGNOSTIC PROCEDURES"

### Our Abpromise to you: Quality guaranteed and expert technical support

- Replacement or refund for products not performing as stated on the datasheet
- Valid for 12 months from date of delivery
- Response to your inquiry within 24 hours
- We provide support in Chinese, English, French, German, Japanese and Spanish
- Extensive multi-media technical resources to help you
- We investigate all quality concerns to ensure our products perform to the highest standards

If the product does not perform as described on this datasheet, we will offer a refund or replacement. For full details of the Abpromise, please visit <https://www.abcam.co.jp/abpromise> or contact our technical team.

#### **Terms and conditions**

---

- Guarantee only valid for products bought direct from Abcam or one of our authorized distributors