

Anti-TLR6 antibody ab37072

7 References [画像数 3](#)

製品の概要

製品名	Anti-TLR6 antibody
製品の詳細	Rabbit polyclonal to TLR6
由来種	Rabbit
特異性	TLR6 antibody is specific to TLR6. It does not recognize TLR1.
アプリケーション	適用あり: WB, ICC/IF
種交差性	交差種: Human
免疫原	Synthetic peptide corresponding to 15 amino acids near the amino terminus of the human TLR6 protein.
ポジティブ・コントロール	Jurkat whole cell lysate (ab7899).
特記事項	<p>The Life Science industry has been in the grips of a reproducibility crisis for a number of years. Abcam is leading the way in addressing this with our range of recombinant monoclonal antibodies and knockout edited cell lines for gold-standard validation. Please check that this product meets your needs before purchasing.</p> <p>If you have any questions, special requirements or concerns, please send us an inquiry and/or contact our Support team ahead of purchase. Recommended alternatives for this product can be found below, along with publications, customer reviews and Q&As</p>

製品の特性

製品の状態	Liquid
保存方法	Shipped at 4°C. Store at +4°C.
バッファー	pH: 7.2 Preservative: 0.02% Sodium azide Constituent: PBS
精製度	Immunogen affinity purified
特記事項(精製)	This antibody was purified by affinity chromatography.
ポリ/モノ	ポリクローナル
アイソタイプ	IgG

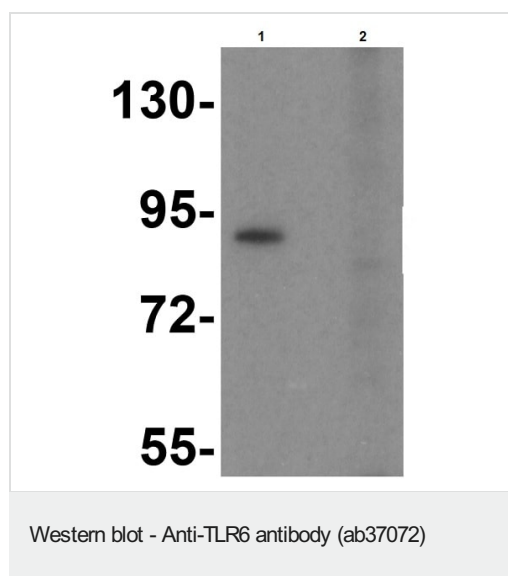
The Abpromise guarantee **Abpromise保証は、** 次のテスト済みアプリケーションにおけるab37072の使用に適用されます
アプリケーションノートには、推奨の開始希釈率がありますが、適切な希釈率につきましてはご検討ください。

アプリケーション	Abreviews	特記事項
WB		Use a concentration of 0.5 - 2 µg/ml. Detects a band of approximately 100 kDa (predicted molecular weight: 92 kDa).
ICC/IF		Use a concentration of 10 µg/ml.

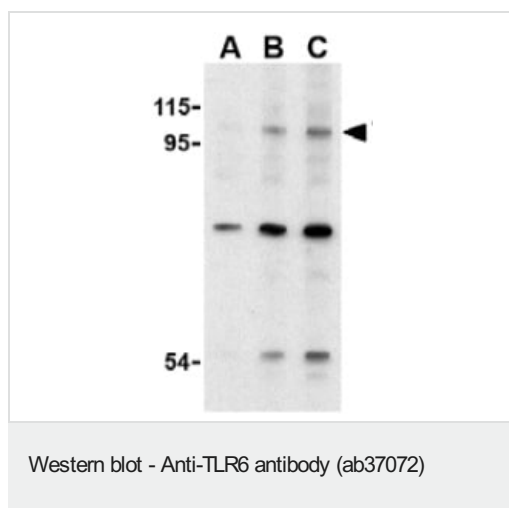
ターゲット情報

機能	Participates in the innate immune response to Gram-positive bacteria and fungi. Acts via MYD88 and TRAF6, leading to NF-kappa-B activation, cytokine secretion and the inflammatory response. Recognizes mycoplasmal macrophage-activating lipopeptide-2kD (MALP-2), soluble tuberculosis factor (STF), phenol-soluble modulins (PSM) and B.burgdorferi outer surface protein A lipoprotein (OspA-L) cooperatively with TLR2.
組織特異性	Detected in monocytes, CD11c+ immature dendritic cells, plasmacytoid pre-dendritic cells and dermal microvessel endothelial cells.
配列類似性	Belongs to the Toll-like receptor family. Contains 12 LRR (leucine-rich) repeats. Contains 1 LRRCT domain. Contains 1 TIR domain.
細胞内局在	Cell membrane. Cytoplasmic vesicle > phagosome membrane.

画像



Western Blot of Daudi cell lysate labeling TLR6 with Anti-TLR6 antibody (ab37072) at 1µg/ml in (1) the absence and (2) the presence of blocking peptide..



Lane 1 : Anti-TLR6 antibody (ab37072) at 0.5 µg/ml

Lane 2 : Anti-TLR6 antibody (ab37072) at 1 µg/ml

Lane 3 : Anti-TLR6 antibody (ab37072) at 2 µg/ml

All lanes : Jurkat cell lysate

Lysates/proteins at 15 µg per lane.

Secondary

All lanes : goat anti-rabbit HRP at 1/10000 dilution

Predicted band size: 92 kDa

Observed band size: 100 kDa

Additional bands at: 55 kDa, 80 kDa. We are unsure as to the identity of these extra bands.



ab37072 at 10 µg/ml staining TLR6 in Jurkat cells by ICC/IF

Please note: All products are "FOR RESEARCH USE ONLY. NOT FOR USE IN DIAGNOSTIC PROCEDURES"

Our Abpromise to you: Quality guaranteed and expert technical support

- Replacement or refund for products not performing as stated on the datasheet
- Valid for 12 months from date of delivery
- Response to your inquiry within 24 hours
- We provide support in Chinese, English, French, German, Japanese and Spanish
- Extensive multi-media technical resources to help you
- We investigate all quality concerns to ensure our products perform to the highest standards

If the product does not perform as described on this datasheet, we will offer a refund or replacement. For full details of the Abpromise, please visit <https://www.abcam.co.jp/abpromise> or contact our technical team.

Terms and conditions

- Guarantee only valid for products bought direct from Abcam or one of our authorized distributors