

Anti-TLR4 antibody ab13556

★★★★☆ [19 Abreviews](#) [281 References](#) [画像数 2](#)

製品の概要

製品名	Anti-TLR4 antibody
製品の詳細	Rabbit polyclonal to TLR4
由来種	Rabbit
特異性	TLR4 expression levels and cleavage or degradation products can vary between different cell and tissue samples. Customers have observed this variability in WB band size and our laboratory has confirmed this variability as well observing lower molecular weight cleavage and degradation products and in some samples a lack of the full length TLR4 band. The TLR4 cleavage and degradation products and potential lack of full length TLR4 are well documented in the literature, including PMID 16885150 and 22927440. We recommend running a positive control human intestine tissue lysate. We have obtained both positive and negative feedback from researchers using this antibody with rat samples (see Abreviews). Due to the inconsistency, we have removed rat as a guaranteed species and welcome any further feedback from researchers using this antibody.
アプリケーション	適用あり: WB, Flow Cyt 適用なし: IHC-Fr or IHC-P
種交差性	交差種: Human
免疫原	Synthetic peptide corresponding to Human TLR4 aa 420-435. Sequence: GLEQLEHLDFQ HSNLK

Database link: [O00206](#)

 [Run BLAST with](#)

 [Run BLAST with](#)

ポジティブ・コントロール WB: HEK-293T overexpressing TLR4 (unboiled) cell lysate

特記事項 The Life Science industry has been in the grips of a reproducibility crisis for a number of years. Abcam is leading the way in addressing this with our range of recombinant monoclonal antibodies and knockout edited cell lines for gold-standard validation. Please check that this product meets your needs before purchasing.

If you have any questions, special requirements or concerns, please send us an inquiry and/or contact our Support team ahead of purchase. Recommended alternatives for this product can be found below, along with publications, customer reviews and Q&As

製品の特性

製品の状態	Liquid
保存方法	Shipped at 4°C. Store at +4°C short term (1-2 weeks). Upon delivery aliquot. Store at -20°C or -80°C. Avoid freeze / thaw cycle.
バッファー	Preservative: 0.09% Sodium azide Constituents: PBS, 50% Glycerol (glycerin, glycerine)
精製度	Protein G purified
ポリ/モノ	ポリクローナル
アイソタイプ	IgG

アプリケーション

The Abpromise guarantee **Abpromise保証は、次のテスト済みアプリケーションにおけるab13556の使用に適用されます**
 アプリケーションノートには、推奨の開始希釈率がありますが、適切な希釈率につきましてはご検討ください。

アプリケーション	Abreviews	特記事項
WB	★★★★★ (5)	1/1000. Predicted molecular weight: 75-80 kDa. Block in 5% Skim Milk in 1X TBST. Other potential band(s): ~130kDa (TLR4+MD-2). We suggest use TLR4 overexpression 293T lysate (whole cell) (ab94063) as positive control.
Flow Cyt	★★★★★ (3)	Use at an assay dependent concentration. ab171870 - Rabbit polyclonal IgG, is suitable for use as an isotype control with this antibody.

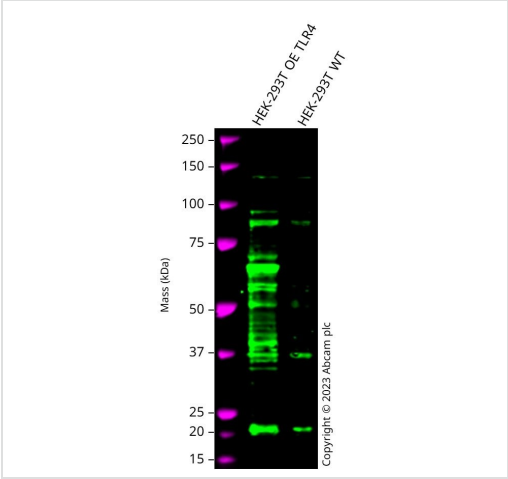
追加情報 Is unsuitable for IHC-Fr or IHC-P.

ターゲット情報

機能	Cooperates with LY96 and CD14 to mediate the innate immune response to bacterial lipopolysaccharide (LPS). Acts via MYD88, TIRAP and TRAF6, leading to NF-kappa-B activation, cytokine secretion and the inflammatory response. Also involved in LPS-independent inflammatory responses triggered by Ni(2+). These responses require non-conserved histidines and are, therefore, species-specific.
組織特異性	Highly expressed in placenta, spleen and peripheral blood leukocytes. Detected in monocytes, macrophages, dendritic cells and several types of T-cells.
関連疾患	Genetic variation in TLR4 is associated with age-related macular degeneration type 10 (ARMD10) [MIM:611488]. ARMD is a multifactorial eye disease and the most common cause of irreversible vision loss in the developed world. In most patients, the disease is manifest as ophthalmoscopically visible yellowish accumulations of protein and lipid that lie beneath the retinal pigment epithelium and within an elastin-containing structure known as Bruch membrane.
配列類似性	Belongs to the Toll-like receptor family. Contains 18 LRR (leucine-rich) repeats. Contains 1 LRRCT domain. Contains 1 TIR domain.
ドメイン	The TIR domain mediates interaction with NOX4.

翻訳後修飾	N-glycosylated. Glycosylation of Asn-526 and Asn-575 seems to be necessary for the expression of TLR4 on the cell surface and the LPS-response. Likewise, mutants lacking two or more of the other N-glycosylation sites were deficient in interaction with LPS.
細胞内局在	Membrane.

画像



Western blot - Anti-TLR4 antibody (ab13556)

All lanes : Anti-TLR4 antibody (ab13556) at 1/1000 dilution

Lane 1 : HEK-293T overexpressing TLR4 (unboiled) cell lysate

Lane 2 : HEK-293T untransfected (unboiled) cell lysate

Lysates/proteins at 20 µg per lane.

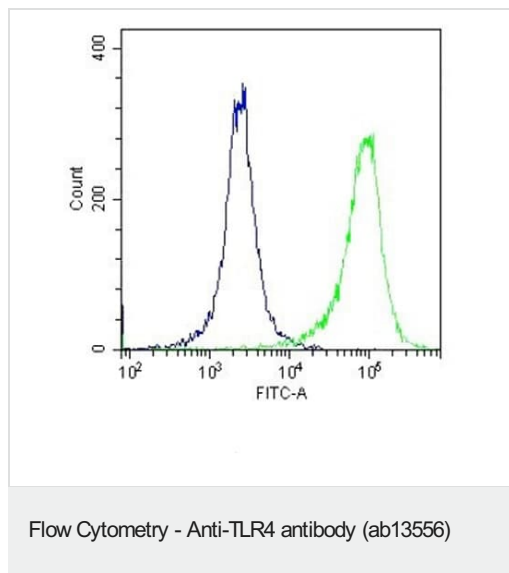
Developed using the ECL technique.

Performed under reducing conditions.

Predicted band size: 75-80 kDa

Observed band size: 70 kDa

Western blot: Anti-TLR4 antibody (ab13556) staining at 1/1000 dilution, shown in green; Mouse anti-GAPDH antibody [6C5] ([ab8245](#)) loading control staining at 1/20000 dilution, shown in magenta. In Western blot, ab13556 was shown to bind specifically to TLR4. First, unboiled samples were run on an SDS-PAGE gel then transferred onto a nitrocellulose membrane. Membranes were blocked in fluorescent western blot (TBS-based) blocking solution before incubation with primary antibodies overnight at 4°C. Blots were washed four times in TBS-T, incubated with secondary antibodies for 1 h at room temperature, washed again four times then imaged. Secondary antibodies used were Goat anti-Rabbit IgG H&L 800CW and Goat anti-Mouse IgG H&L 680RD at 1/20000 dilution.



Flow cytometry analysis of THP-1 (Human monocytic leukemia cell line). Cells were fixed with 2% formaldehyde for 10 minutes at room temperature. ab13556 was used at $2 \mu\text{g}/10^6$ cells for 60 minutes at 37°C (green). Goat Anti- Rabbit Dylight 488 was used as a secondary antibody at 1/200 dilution for 40 minutes at 37°C . Isotype control was Rabbit IgG under the same conditions (blue).

Please note: All products are "FOR RESEARCH USE ONLY. NOT FOR USE IN DIAGNOSTIC PROCEDURES"

Our Abpromise to you: Quality guaranteed and expert technical support

- Replacement or refund for products not performing as stated on the datasheet
- Valid for 12 months from date of delivery
- Response to your inquiry within 24 hours
- We provide support in Chinese, English, French, German, Japanese and Spanish
- Extensive multi-media technical resources to help you
- We investigate all quality concerns to ensure our products perform to the highest standards

If the product does not perform as described on this datasheet, we will offer a refund or replacement. For full details of the Abpromise, please visit <https://www.abcam.co.jp/abpromise> or contact our technical team.

Terms and conditions

- Guarantee only valid for products bought direct from Abcam or one of our authorized distributors