

Anti-TLR11 antibody ab21274

画像数 2

製品の概要

製品名	Anti-TLR11 antibody
製品の詳細	Rabbit polyclonal to TLR11
由来種	Rabbit
アプリケーション	適用あり: ICC/IF, WB
種交差性	交差種: Mouse
免疫原	Synthetic peptide corresponding to Mouse TLR11 (C terminal). The immunogen is located within the last 50 amino acids (peptide corresponding to 15 amino acids) of TLR11. Database link: Q6R5P0 (Peptide available as ab39867)
特記事項	<p>The Life Science industry has been in the grips of a reproducibility crisis for a number of years. Abcam is leading the way in addressing this with our range of recombinant monoclonal antibodies and knockout edited cell lines for gold-standard validation. Please check that this product meets your needs before purchasing.</p> <p>If you have any questions, special requirements or concerns, please send us an inquiry and/or contact our Support team ahead of purchase. Recommended alternatives for this product can be found below, along with publications, customer reviews and Q&As</p>

製品の特性

製品の状態	Liquid
保存方法	Shipped at 4°C. Store at +4°C.
バッファー	pH: 7.2 Preservative: 0.02% Sodium azide Constituent: PBS
特記事項(精製)	Ion exchange chromatography.
ポリ/モノ	ポリクローナル
アイソタイプ	IgG

アプリケーション

The Abpromise guarantee

Abpromise保証は、次のテスト済みアプリケーションにおけるab21274の使用に適用されます

アプリケーションノートには、推奨の開始希釈率がありますが、適切な希釈率につきましてはご検討ください。

アプリケーション	Abreviews	特記事項
ICC/IF		Use a concentration of 2 µg/ml.
WB		Use a concentration of 0.5 - 1 µg/ml. Detects a band of approximately 90 kDa.

ターゲット情報

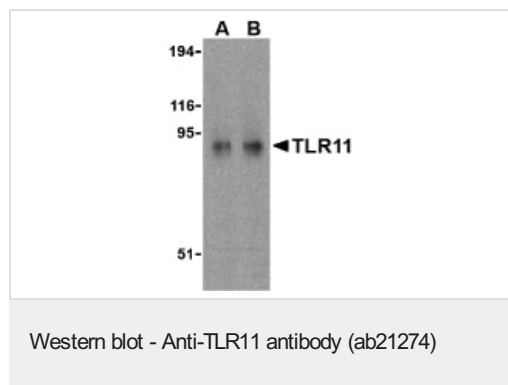
関連性

Toll like receptors (TLRs) are signaling molecules that recognize different microbial products during infection and serve as an important link between the innate and adaptive immune responses. These proteins act through adaptor molecules such as MyD88 and TIRAP to activate various kinases and transcription factors. TLR11 is one of three mouse TLRs that lack a human ortholog. It is activated specifically by uropathogenic bacteria, and mice lacking TLR11 showed a much greater susceptibility to uropathogenic infections, indicating a potentially important role for TLR11 in preventing infections in the urogenital system.

細胞内局在

Type I membrane protein

画像



Western blot analysis of TLR11 in RAW264.7 cell lysates with anti-TLR11 at (A) 0.5 and (B) 1 µg/ml. Western blot analysis of TLR11 in RAW264.7 cell lysates with anti-TLR11 at (A) 0.5 and (B) 1 µg/ml.



ab21274 at 2µg/ml staining TLR11 in RAW264.7 cells by ICC/IF

Please note: All products are "FOR RESEARCH USE ONLY. NOT FOR USE IN DIAGNOSTIC PROCEDURES"

Our Abpromise to you: Quality guaranteed and expert technical support

- Replacement or refund for products not performing as stated on the datasheet
- Valid for 12 months from date of delivery
- Response to your inquiry within 24 hours

- We provide support in Chinese, English, French, German, Japanese and Spanish
- Extensive multi-media technical resources to help you
- We investigate all quality concerns to ensure our products perform to the highest standards

If the product does not perform as described on this datasheet, we will offer a refund or replacement. For full details of the Abpromise, please visit <https://www.abcam.co.jp/abpromise> or contact our technical team.

Terms and conditions

- Guarantee only valid for products bought direct from Abcam or one of our authorized distributors