





# Anti-TLR10 antibody ab53631

**2 References**   [画像数 2](#)

### 製品の概要

製品名	Anti-TLR10 antibody
製品の詳細	Goat polyclonal to TLR10
由来種	Goat
アプリケーション	<b>適用あり:</b> IHC-P
種交差性	<b>交差種:</b> Human <b>交差が予測される動物種:</b> Cow 
免疫原	Synthetic peptide: C HNRIQQLDLK TFEFNKELRY LDLSNNRLKS V, corresponding to amino acids 80-111 of Human TLR10  <a href="#">Run BLAST with</a>  <a href="#">Run BLAST with</a> 
特記事項	<p>The Life Science industry has been in the grips of a reproducibility crisis for a number of years. Abcam is leading the way in addressing this with our range of recombinant monoclonal antibodies and knockout edited cell lines for gold-standard validation. Please check that this product meets your needs before purchasing.</p> <p>If you have any questions, special requirements or concerns, please send us an inquiry and/or contact our Support team ahead of purchase. Recommended alternatives for this product can be found below, along with publications, customer reviews and Q&amp;As</p>

### 製品の特性

製品の状態	Liquid
保存方法	Shipped at 4°C. Upon delivery aliquot. Avoid freeze / thaw cycle.
バッファー	pH: 7.20 Preservative: 0.1% Sodium azide Constituents: 0.1% BSA, 0.21% Potassium phosphate, 0.812% Sodium chloride, PBS
精製度	Immunogen affinity purified
ポリ/モノ	ポリクローナル
アイソタイプ	IgG

### アプリケーション

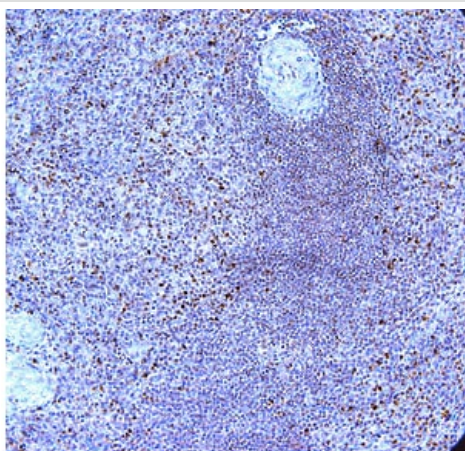
**The Abpromise guarantee**      **Abpromise保証は、**次のテスト済みアプリケーションにおけるab53631の使用に適用されます  
 アプリケーションノートには、推奨の開始希釈率がありますが、適切な希釈率につきましてはご検討ください。

アプリケーション	Abreviews	特記事項
IHC-P		1/250.

## ターゲット情報

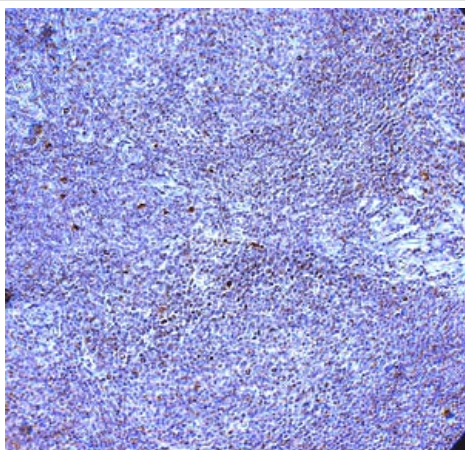
機能	Participates in the innate immune response to microbial agents. Acts via MYD88 and TRAF6, leading to NF-kappa-B activation, cytokine secretion and the inflammatory response.
組織特異性	Highly expressed in spleen, lymph node, thymus, tonsil and at lower levels in lung. Highly expressed in promyelocytic HL-60 cells and in B-cell lines.
配列類似性	Belongs to the Toll-like receptor family. Contains 15 LRR (leucine-rich) repeats. Contains 1 LRRCT domain. Contains 1 TIR domain.
細胞内局在	Membrane.

## 画像



ab53631 at 1/250 dilution staining TLR10 in human spleen by Immunohistochemistry, Paraffin embedded tissue.

Immunohistochemistry (Formalin/PFA-fixed paraffin-embedded sections) - Anti-TLR10 antibody (ab53631)



ab53631 at 1/250 dilution staining TLR10 in human tonsil by Immunohistochemistry, Paraffin embedded tissue.

Immunohistochemistry (Formalin/PFA-fixed paraffin-embedded sections) - Anti-TLR10 antibody (ab53631)

**Please note:** All products are "FOR RESEARCH USE ONLY. NOT FOR USE IN DIAGNOSTIC PROCEDURES"

### Our Abpromise to you: Quality guaranteed and expert technical support

---

- Replacement or refund for products not performing as stated on the datasheet
- Valid for 12 months from date of delivery
- Response to your inquiry within 24 hours
- We provide support in Chinese, English, French, German, Japanese and Spanish
- Extensive multi-media technical resources to help you
- We investigate all quality concerns to ensure our products perform to the highest standards

If the product does not perform as described on this datasheet, we will offer a refund or replacement. For full details of the Abpromise, please visit <https://www.abcam.co.jp/abpromise> or contact our technical team.

### Terms and conditions

---

- Guarantee only valid for products bought direct from Abcam or one of our authorized distributors