

Anti-TLE4 antibody ab64833

★★★★★ **2 Abreviews** **4 References** 画像数 2

製品の概要

製品名	Anti-TLE4 antibody
製品の詳細	Rabbit polyclonal to TLE4
由来種	Rabbit
アプリケーション	適用あり: WB
種交差性	交差種: Rat, Human
免疫原	Synthetic peptide corresponding to Human TLE4 (internal sequence). Database link: Q04727
ポジティブ・コントロール	WB: Jurkat, 293, HuvEc cell; rat muscle lysate.
特記事項	<p>The Life Science industry has been in the grips of a reproducibility crisis for a number of years. Abcam is leading the way in addressing this with our range of recombinant monoclonal antibodies and knockout edited cell lines for gold-standard validation. Please check that this product meets your needs before purchasing.</p> <p>If you have any questions, special requirements or concerns, please send us an inquiry and/or contact our Support team ahead of purchase. Recommended alternatives for this product can be found below, along with publications, customer reviews and Q&As</p>

製品の特性

製品の状態	Liquid
保存方法	Shipped at 4°C. Store at -20°C. Stable for 12 months at -20°C.
バッファー	<p>pH: 7.40</p> <p>Preservative: 0.02% Sodium azide</p> <p>Constituents: PBS, 50% Glycerol (glycerin, glycerine), 0.87% Sodium chloride</p>
精製度	Without Mg ²⁺ and Ca ²⁺
ポリ/モノ	Immunogen affinity purified
アイソタイプ	ポリクローナル
	IgG

アプリケーション

The Abpromise guarantee

Abpromise保証は、次のテスト済みアプリケーションにおけるab64833の使用に適用されます

アプリケーションノートには、推奨の開始希釈率がありますが、適切な希釈率につきましてはご検討ください。

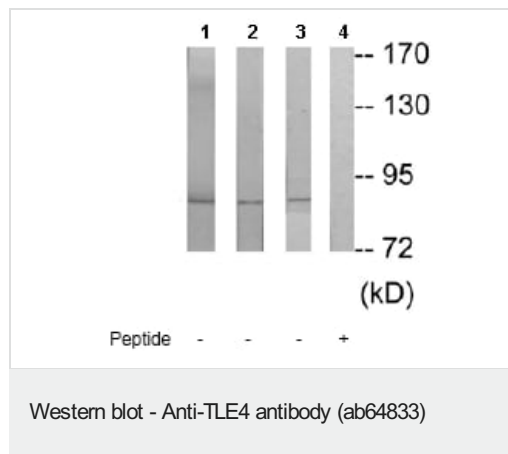
アプリケーション	Abreviews	特記事項
WB	★☆☆☆☆ (1)	1/500 - 1/1000. Detects a band of approximately 84 kDa (predicted molecular weight: 84 kDa).

ターゲット情報

関連性 TLE4 (Transducin-like enhancer protein 4) is a member of the Groucho family of transcriptional corepressors and inhibits the transcriptional activation mediated by Pax5 and by beta-catenin and TCF family members in Wnt signaling.

細胞内局在 Nuclear

画像



All lanes : Anti-TLE4 antibody (ab64833) at 1/500 dilution

Lane 1 : Jurkat cell extract at 30 µg

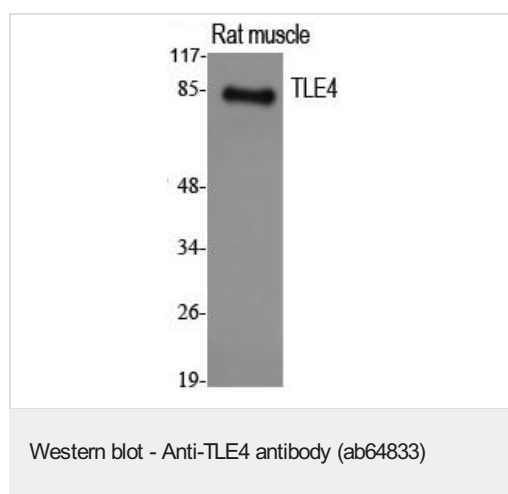
Lane 2 : 293 cell extract at 30 µg

Lane 3 : HuvEc cell extract at 30 µg

Lane 4 : HuvEc cell extract immunising peptide at 10 µg

Predicted band size: 84 kDa

Observed band size: 84 kDa



Anti-TLE4 antibody (ab64833) at 1/1000 dilution + Rat muscle lysate

Predicted band size: 84 kDa

Please note: All products are "FOR RESEARCH USE ONLY. NOT FOR USE IN DIAGNOSTIC PROCEDURES"

Our Abpromise to you: Quality guaranteed and expert technical support

- Replacement or refund for products not performing as stated on the datasheet
- Valid for 12 months from date of delivery
- Response to your inquiry within 24 hours

- We provide support in Chinese, English, French, German, Japanese and Spanish
- Extensive multi-media technical resources to help you
- We investigate all quality concerns to ensure our products perform to the highest standards

If the product does not perform as described on this datasheet, we will offer a refund or replacement. For full details of the Abpromise, please visit <https://www.abcam.co.jp/abpromise> or contact our technical team.

Terms and conditions

- Guarantee only valid for products bought direct from Abcam or one of our authorized distributors