


Anti-TLE 1 antibody ab125183

1 References [画像数 3](#)

製品の概要

製品名	Anti-TLE 1 antibody
製品の詳細	Rabbit polyclonal to TLE 1
由来種	Rabbit
アプリケーション	適用あり: WB, IP, IHC-P
種交差性	交差種: Human 交差が予測される動物種: Mouse, Rat, Horse, Guinea pig, Cow, Pig, Chimpanzee, Ferret, Rhesus monkey, Gorilla, Orangutan, Elephant 
免疫原	Synthetic peptide corresponding to Human TLE 1 aa 150-250. Database link: Q04724
ポジティブ・コントロール	WB: Jurkat, 293T and HeLa whole cell lysates. IP: 293T cells. IHC-P: Human breast carcinoma tissue.
特記事項	<p>The Life Science industry has been in the grips of a reproducibility crisis for a number of years. Abcam is leading the way in addressing this with our range of recombinant monoclonal antibodies and knockout edited cell lines for gold-standard validation. Please check that this product meets your needs before purchasing.</p> <p>If you have any questions, special requirements or concerns, please send us an inquiry and/or contact our Support team ahead of purchase. Recommended alternatives for this product can be found below, along with publications, customer reviews and Q&As</p>

製品の特性

製品の状態	Liquid
保存方法	Shipped at 4°C. Upon delivery aliquot and store at -20°C. Avoid freeze / thaw cycles.
バッファー	pH: 7 Preservative: 0.09% Sodium azide Constituent: 99% Tris citrate/phosphate
精製度	pH 7 to 8 Immunogen affinity purified
ポリモノ	ポリクローナル
アイソタイプ	IgG

アプリケーション

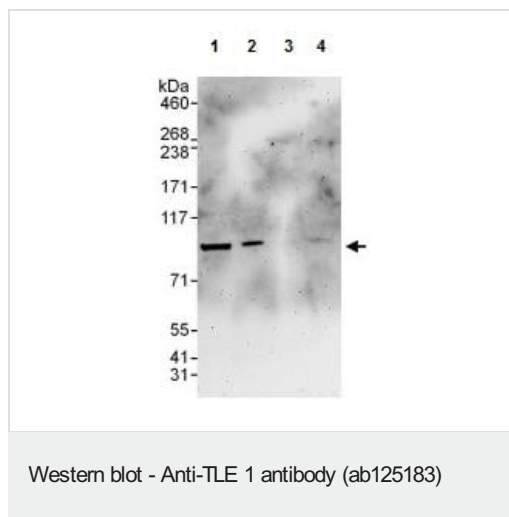
The Abpromise guarantee **Abpromise保証は、次のテスト済みアプリケーションにおけるab125183の使用に適用されます**
アプリケーションノートには、推奨の開始希釈率がありますが、適切な希釈率につきましてはご確認ください。

アプリケーション	Abreviews	特記事項
WB		1/2000 - 1/10000. Predicted molecular weight: 83 kDa.
IP		Use at 2-10 µg/mg of lysate.
IHC-P		1/500 - 1/2000.

ターゲット情報

機能	Transcriptional corepressor that binds to a number of transcription factors. Inhibits NF-kappa-B-regulated gene expression. Inhibits the transcriptional activation mediated by FOXA2, and by CTNNB1 and TCF family members in Wnt signaling. The effects of full-length TLE family members may be modulated by association with dominant-negative AES. Unusual function as coactivator for ESRRG.
組織特異性	In all tissues examined, mostly in brain, liver and muscle.
配列類似性	Belongs to the WD repeat Groucho/TLE family. Contains 6 WD repeats.
ドメイン	WD repeat Groucho/TLE family members are characterized by 5 regions, a glutamine-rich Q domain, a glycine/proline-rich GP domain, a central CcN domain, containing a nuclear localization signal, and a serine/proline-rich SP domain. The most highly conserved are the N-terminal Q domain and the C-terminal WD-repeat domain.
翻訳後修飾	Phosphorylated, probably by CDK1. The degree of phosphorylation varies throughout the cell cycle, and is highest at the G2/M transition. Becomes hyperphosphorylated in response to cell differentiation and interaction with HES1 or RUNX1. Ubiquitinated by XIAP/BIRC4.
細胞内局在	Nucleus. Nuclear and chromatin-associated, depending on isoforms and phosphorylation status. Hyperphosphorylation decreases the affinity for nuclear components.

画像



All lanes : Anti-TLE 1 antibody (ab125183) at 0.1 $\mu\text{g/ml}$

Lane 1 : 293T whole cell lysate at 50 μg

Lane 2 : 293T whole cell lysate at 15 μg

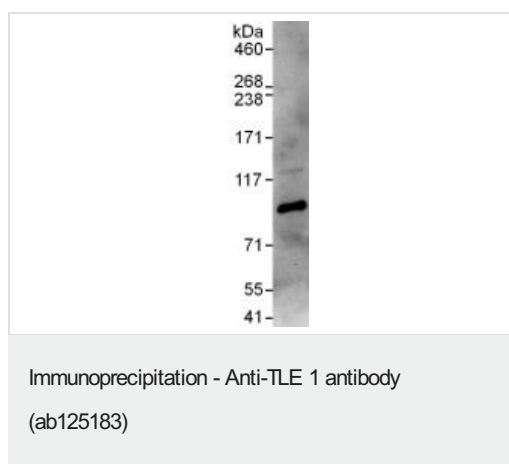
Lane 3 : Jurkat whole cell lysate at 50 μg

Lane 4 : HeLa whole cell lysate at 50 μg

Developed using the ECL technique.

Predicted band size: 83 kDa

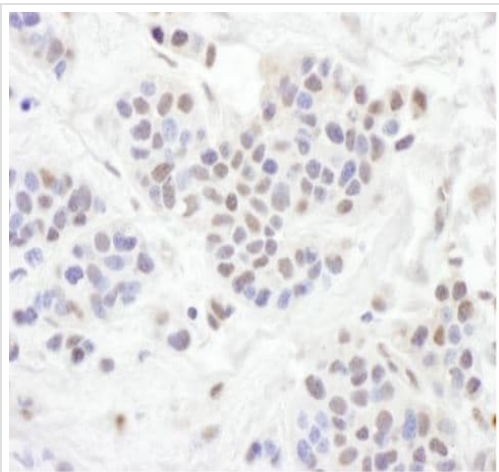
Exposure time: 3 minutes



ab125183, at 6 $\mu\text{g/mg}$ lysate, detecting TLE 1 in 293T cell lysate by Immunoprecipitation.

For the subsequent Western blot, ab125183 was used at 0.4 $\mu\text{g/ml}$ (1 mg of immunoprecipitate, 20% loaded in the lane).

The blot was developed using the ECL technique, with an exposure time of 30 seconds.



Paraffin embedded human breast carcinoma tissue stained for TLE 1 using ab125183 at 1/1000 dilution in immunohistochemical analysis.

Immunohistochemistry (Formalin/PFA-fixed paraffin-embedded sections) - Anti-TLE 1 antibody (ab125183)

Please note: All products are "FOR RESEARCH USE ONLY. NOT FOR USE IN DIAGNOSTIC PROCEDURES"

Our Abpromise to you: Quality guaranteed and expert technical support

- Replacement or refund for products not performing as stated on the datasheet
- Valid for 12 months from date of delivery
- Response to your inquiry within 24 hours
- We provide support in Chinese, English, French, German, Japanese and Spanish
- Extensive multi-media technical resources to help you
- We investigate all quality concerns to ensure our products perform to the highest standards

If the product does not perform as described on this datasheet, we will offer a refund or replacement. For full details of the Abpromise, please visit <https://www.abcam.co.jp/abpromise> or contact our technical team.

Terms and conditions

- Guarantee only valid for products bought direct from Abcam or one of our authorized distributors