

# Anti-Tissue Plasminogen Activator antibody [H27B6] ab28374

**4 References**   [画像数 1](#)

### 製品の概要

製品名	Anti-Tissue Plasminogen Activator antibody [H27B6]
製品の詳細	Mouse monoclonal [H27B6] to Tissue Plasminogen Activator
由来種	Mouse
アプリケーション	<b>適用あり:</b> WB, ELISA, IHC-P
種交差性	<b>交差種:</b> Mouse, Rat
免疫原	Recombinant full length protein (Mouse)
エピトープ	protease domain (see Declerck et al)
ポジティブ・コントロール	This antibody gave a positive result in IHC in the following FFPE tissue: Rat Normal Kidney.
特記事項	<p>The Life Science industry has been in the grips of a reproducibility crisis for a number of years. Abcam is leading the way in addressing this with our range of recombinant monoclonal antibodies and knockout edited cell lines for gold-standard validation. Please check that this product meets your needs before purchasing.</p> <p>If you have any questions, special requirements or concerns, please send us an inquiry and/or contact our Support team ahead of purchase. Recommended alternatives for this product can be found below, along with publications, customer reviews and Q&amp;As</p>

### 製品の特性

製品の状態	Liquid
保存方法	Shipped at 4°C. Upon delivery aliquot. Avoid freeze / thaw cycle.
バッファー	pH: 7.40 Constituents: 0.82% Sodium phosphate, 0.87% Sodium chloride
精製度	Protein A purified
特記事項 (精製)	Protein A Sepharose. Purity is = 98% assessed by visual inspection of a Coomassie® bluestained SDS-PAGE gel.
ポリ/モノ	モノクローナル
クローン名	H27B6
アイソタイプ	IgG

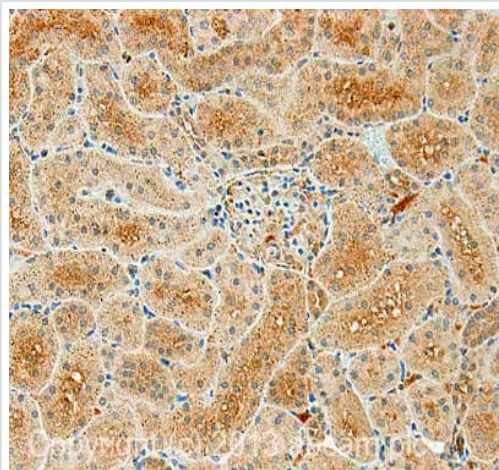
The Abpromise guarantee Abpromise保証は、次のテスト済みアプリケーションにおけるab28374の使用に適用されます  
アプリケーションノートには、推奨の開始希釈率がありますが、適切な希釈率につきましてはご検討ください。

アプリケーション	Abreviews	特記事項
WB		Use at an assay dependent concentration.
ELISA		Use at an assay dependent concentration.
IHC-P		Use a concentration of 10 µg/ml. Perform heat mediated antigen retrieval with citrate buffer pH 6 before commencing with IHC staining protocol.

## ターゲット情報

機能	Converts the abundant, but inactive, zymogen plasminogen to plasmin by hydrolyzing a single Arg-Val bond in plasminogen. By controlling plasmin-mediated proteolysis, it plays an important role in tissue remodeling and degradation, in cell migration and many other physiopathological events. Play a direct role in facilitating neuronal migration.
組織特異性	Synthesized in numerous tissues (including tumors) and secreted into most extracellular body fluids, such as plasma, uterine fluid, saliva, gingival crevicular fluid, tears, seminal fluid, and milk.
関連疾患	Note=Increased activity of TPA results in increased fibrinolysis of fibrin blood clots that is associated with excessive bleeding. Defective release of TPA results in hypofibrinolysis that can lead to thrombosis or embolism.
配列類似性	Belongs to the peptidase S1 family. Contains 1 EGF-like domain. Contains 1 fibronectin type-I domain. Contains 2 kringle domains. Contains 1 peptidase S1 domain.
ドメイン	Both FN1 and one of the kringle domains are required for binding to fibrin. Both FN1 and EGF-like domains are important for binding to LRP1. The FN1 domain mediates binding to annexin A2. The second kringle domain is implicated in binding to cytokeratin-8 and to the endothelial cell surface binding site.
翻訳後修飾	The single chain, almost fully active enzyme, can be further processed into a two-chain fully active form by a cleavage after Arg-310 catalyzed by plasmin, tissue kallikrein or factor Xa. Differential cell-specific N-linked glycosylation gives rise to two glycoforms, type I (glycosylated at Asn-219) and type II (not glycosylated at Asn-219). The single chain type I glycoform is less readily converted into the two-chain form by plasmin, and the two-chain type I glycoform has a lower activity than the two-chain type II glycoform in the presence of fibrin. N-glycosylation of Asn-152; the bound oligomannosidic glycan is involved in the interaction with the mannose receptor. Characterization of O-linked glycan was studied in Bowes melanoma cell line.
細胞内局在	Secreted > extracellular space.

## 画像



Immunohistochemistry (Formalin/PFA-fixed paraffin-embedded sections) - Anti-TPA Tissue Plasminogen Activator antibody [H27B6] (ab28374)

IHC image of TPA Tissue Plasminogen Activator staining in Rat Normal Kidney formalin fixed paraffin embedded tissue section, performed on a Leica Bond™ system using the standard protocol F. The section was pre-treated using heat mediated antigen retrieval with sodium citrate buffer (pH6, epitope retrieval solution 1) for 20 mins. The section was then incubated with ab28374, 10µg/ml, for 15 mins at room temperature and detected using an HRP conjugated compact polymer system. DAB was used as the chromogen. The section was then counterstained with haematoxylin and mounted with DPX.

For other IHC staining systems (automated and non-automated) customers should optimize variable parameters such as antigen retrieval conditions, primary antibody concentration and antibody incubation times.

**Please note:** All products are "FOR RESEARCH USE ONLY. NOT FOR USE IN DIAGNOSTIC PROCEDURES"

### Our Abpromise to you: Quality guaranteed and expert technical support

- Replacement or refund for products not performing as stated on the datasheet
- Valid for 12 months from date of delivery
- Response to your inquiry within 24 hours
- We provide support in Chinese, English, French, German, Japanese and Spanish
- Extensive multi-media technical resources to help you
- We investigate all quality concerns to ensure our products perform to the highest standards

If the product does not perform as described on this datasheet, we will offer a refund or replacement. For full details of the Abpromise, please visit <https://www.abcam.co.jp/abpromise> or contact our technical team.

### Terms and conditions

- Guarantee only valid for products bought direct from Abcam or one of our authorized distributors