

# Anti-Tissue kallikrein antibody ab28289

**4 References**   [画像数 2](#)

### 製品の概要

製品名	Anti-Tissue kallikrein antibody
製品の詳細	Rabbit polyclonal to Tissue kallikrein
由来種	Rabbit
特異性	ab28289 recognises the Kallikrein loop of Tissue kallikrein. It does not react with the other human Kallikreins.
アプリケーション	<b>適用あり:</b> WB, IHC-P
種交差性	<b>交差種:</b> Human
免疫原	Synthetic peptide corresponding to Human Tissue kallikrein. Corresponding to the the Kallikrein loop area of Tissue kallikrein. (Peptide available as <b>ab41419</b> )
特記事項	<p>The Life Science industry has been in the grips of a reproducibility crisis for a number of years. Abcam is leading the way in addressing this with our range of recombinant monoclonal antibodies and knockout edited cell lines for gold-standard validation. Please check that this product meets your needs before purchasing.</p> <p>If you have any questions, special requirements or concerns, please send us an inquiry and/or contact our Support team ahead of purchase. Recommended alternatives for this product can be found below, along with publications, customer reviews and Q&amp;As</p>

### 製品の特性

製品の状態	Liquid
保存方法	Shipped at 4°C. Store at +4°C short term (1-2 weeks). Upon delivery aliquot. Store at -20°C long term.
バッファー	Preservative: 0.05% Sodium azide Constituent: 50% Glycerol
精製度	Immunogen affinity purified
ポリ/モノ	ポリクローナル
アイソタイプ	IgG

### アプリケーション

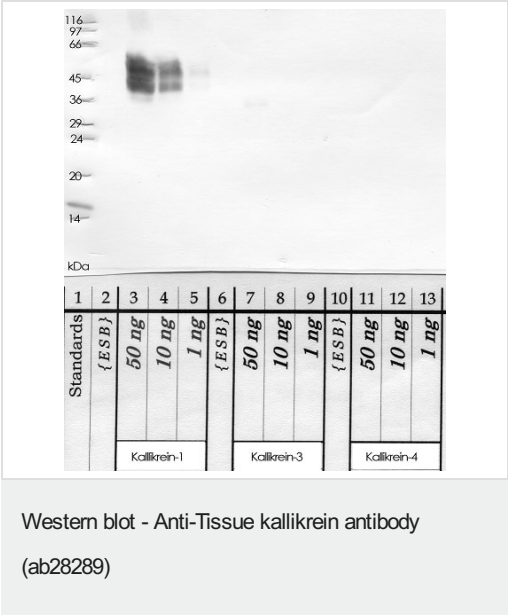
**The Abpromise guarantee**      **Abpromise保証は、**次のテスト済みアプリケーションにおけるab28289の使用に適用されます  
アプリケーションノートには、推奨の開始希釈率がありますが、適切な希釈率につきましてはご検討ください。

アプリケーション	Abreviews	特記事項
WB		1/1000 - 1/5000. Predicted molecular weight: 28 kDa.
IHC-P		Use a concentration of 1 µg/ml. Perform heat mediated antigen retrieval with Tris/EDTA buffer pH 9.0 before commencing with IHC staining protocol.

ターゲット情報

機能	Glandular kallikreins cleave Met-Lys and Arg-Ser bonds in kininogen to release Lys-bradykinin.
組織特異性	Isoform 2 is expressed in pancreas, salivary glands, kidney, colon, prostate gland, testis, spleen and the colon adenocarcinoma cell line T84.
配列類似性	Belongs to the peptidase S1 family. Kallikrein subfamily. Contains 1 peptidase S1 domain.
翻訳後修飾	The O-linked polysaccharides on Ser-93, Ser-104 and Ser-167 are probably the mucin type linked to GalNAc. In PubMed:3163150, GalNAc was detected with the corresponding peptides but not located.

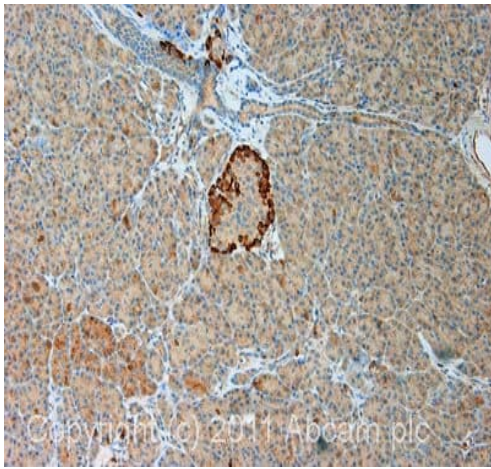
画像



**All lanes :** Anti-Tissue kallikrein antibody (ab28289) at 1/1000 dilution

- Lane 3 :** Kallikrein-1 (rhK-1) at 0.05 µg
- Lane 4 :** Kallikrein-1 (rhK-1) at 0.01 µg
- Lane 5 :** Kallikrein-1 (rhK-1) at 0.001 µg
- Lane 7 :** Kallikrein-3 (rhK-3) at 0.05 µg
- Lane 8 :** Kallikrein-3 (rhK-3) at 0.01 µg
- Lane 9 :** Kallikrein-3 (rhK-3) at 0.001 µg
- Lane 11 :** Kallikrein-4 (rhK-4) at 0.05 µg
- Lane 12 :** Kallikrein-4 (rhK-4) at 0.01 µg
- Lane 13 :** Kallikrein-4 (rhK-4) at 0.001 µg

**Predicted band size:** 28 kDa



Immunohistochemistry (Formalin/PFA-fixed paraffin-embedded sections) - Anti-Tissue kallikrein antibody (ab28289)

IHC image of ab28289 staining in human normal pancreas formalin fixed paraffin embedded tissue section, performed on a Leica Bond™ system using the standard protocol F. The section was pre-treated using heat mediated antigen retrieval with EDTA (pH9, epitope retrieval solution 2) for 20 mins. The section was then incubated with ab28289, 1 µg/ml, for 15 mins at room temperature and detected using an HRP conjugated compact polymer system. DAB was used as the chromogen. The section was then counterstained with haematoxylin and mounted with DPX.

For other IHC staining systems (automated and non-automated) customers should optimize variable parameters such as antigen retrieval conditions, primary antibody concentration and antibody incubation times.

**Please note:** All products are "FOR RESEARCH USE ONLY. NOT FOR USE IN DIAGNOSTIC PROCEDURES"

### Our Abpromise to you: Quality guaranteed and expert technical support

- Replacement or refund for products not performing as stated on the datasheet
- Valid for 12 months from date of delivery
- Response to your inquiry within 24 hours
- We provide support in Chinese, English, French, German, Japanese and Spanish
- Extensive multi-media technical resources to help you
- We investigate all quality concerns to ensure our products perform to the highest standards

If the product does not perform as described on this datasheet, we will offer a refund or replacement. For full details of the Abpromise, please visit <https://www.abcam.co.jp/abpromise> or contact our technical team.

### Terms and conditions

- Guarantee only valid for products bought direct from Abcam or one of our authorized distributors