

Anti-Tissue Factor antibody [EPR20369] ab211016

KO 評価済

リコンビナント

RabMAb

画像数 8

製品の概要

製品名	Anti-Tissue Factor antibody [EPR20369]
製品の詳細	Rabbit monoclonal [EPR20369] to Tissue Factor
由来種	Rabbit
アプリケーション	適用あり: WB, IHC-P
種交差性	交差種: Human
免疫原	Recombinant fragment. This information is proprietary to Abcam and/or its suppliers.
ポジティブ・コントロール	WB: Human Tissue Factor His-tagged recombinant protein (aa34-251); MDA-MB-231 and U-87 MG whole cell lysates; Human fetal kidney and lung cancer lysates. IHC-P: Human placenta, kidney and pancreas cancer tissues.
特記事項	<p>This product is a recombinant monoclonal antibody, which offers several advantages including:</p> <ul style="list-style-type: none">- High batch-to-batch consistency and reproducibility- Improved sensitivity and specificity- Long-term security of supply- Animal-free production <p>For more information see here.</p> <p>Our RabMAb[®] technology is a patented hybridoma-based technology for making rabbit monoclonal antibodies. For details on our patents, please refer to RabMAb[®] patents.</p>

製品の特性

製品の状態	Liquid
保存方法	Shipped at 4°C. Store at +4°C short term (1-2 weeks). Upon delivery aliquot. Store at -20°C long term. Avoid freeze / thaw cycle.
バッファー	pH: 7.2 Preservative: 0.01% Sodium azide Constituents: 59% PBS, 40% Glycerol (glycerin, glycerine), 0.05% BSA
精製度	Protein A purified
ポリ/モノ	モノクローナル
クローン名	EPR20369

アプリケーション

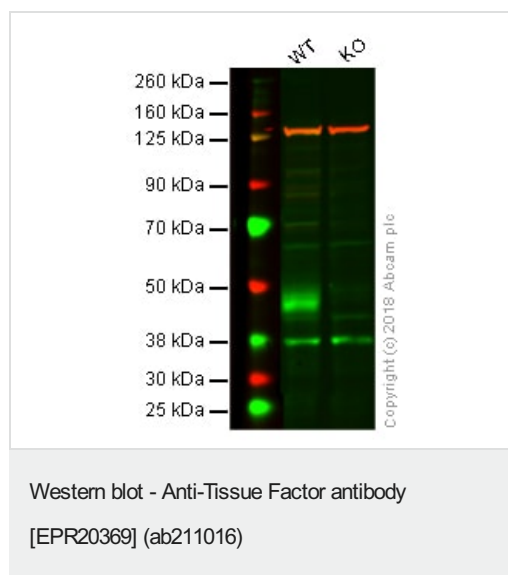
The Abpromise guarantee **Abpromise保証は、次のテスト済みアプリケーションにおけるab211016の使用に適用されず**
アプリケーションノートには、推奨の開始希釈率がありますが、適切な希釈率につきましてはご検討ください。

アプリケーション	Abreviews	特記事項
WB		1/1000. Detects a band of approximately 42 kDa (predicted molecular weight: 33 kDa).
IHC-P		1/50. Perform heat mediated antigen retrieval with Tris/EDTA buffer pH 9.0 before commencing with IHC staining protocol.

ターゲット情報

機能	Initiates blood coagulation by forming a complex with circulating factor VII or VIIa. The [TF:VIIa] complex activates factors IX or X by specific limited proteolysis. TF plays a role in normal hemostasis by initiating the cell-surface assembly and propagation of the coagulation protease cascade.
配列類似性	Belongs to the tissue factor family.
細胞内局在	Membrane.

画像



All lanes : Anti-Tissue Factor antibody [EPR20369] (ab211016) at 1/1000 dilution (Anti-Tissue Factor antibody NPD)

Lane 1 : Wild-type HAP1 whole cell lysate

Lane 2 : Tissue Factor knockout HAP1 whole cell lysate

Lysates/proteins at 40 µg per lane.

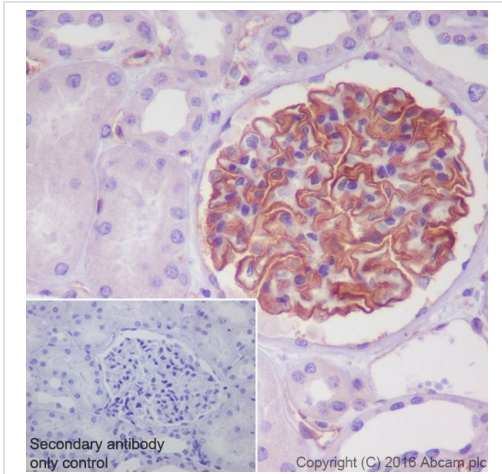
Predicted band size: 33 kDa

Observed band size: 39 kDa

Lanes 1 - 2: Merged signal (red and green). Green - ab211016 observed at 49 kDa. Red - loading control, **ab18058**, observed at 130 kDa.

ab211016 was shown to recognize Tissue Factor in wild-type HAP1 cells as signal was lost at the expected MW in Tissue Factor

knockout cells. Additional cross-reactive bands were observed in the wild-type and knockout cells. Wild-type and F3 (Tissue Factor) knockout samples were subjected to SDS-PAGE. Ab211016 and **ab18058** (Mouse anti-Vinculin loading control) were incubated overnight at 4°C at 1/1000 dilution and 1/20000 dilution respectively. Blots were developed with Goat anti-Rabbit IgG H&L (IRDye® 800CW) preabsorbed **ab216773** and Goat anti-Mouse IgG H&L (IRDye® 680RD) preabsorbed **ab216776** secondary antibodies at 1/20000 dilution for 1 hour at room temperature before imaging.



Immunohistochemistry (Formalin/PFA-fixed paraffin-embedded sections) - Anti-Tissue Factor antibody [EPR20369] (ab211016)

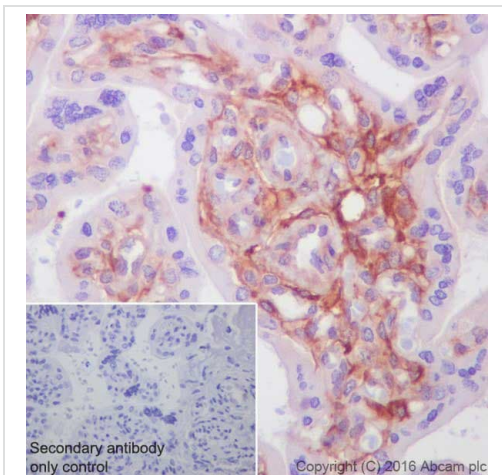
Immunohistochemical analysis of paraffin-embedded human kidney tissue labeling Tissue Factor with ab211016 at 1/50 dilution, followed by Rabbit specific IHC polymer detection kit HRP/DAB (**ab209101**) Ready to use.

Cytoplasmic staining on human kidney glomerulus is observed [PMID: 2237820].

Counter stained with Hematoxylin.

Secondary antibody only control: Used PBS instead of primary antibody, secondary antibody is Rabbit specific IHC polymer detection kit HRP/DAB (**ab209101**) Ready to use.

Perform heat mediated antigen retrieval with Tris/EDTA buffer pH 9.0 before commencing with IHC staining protocol.



Immunohistochemistry (Formalin/PFA-fixed paraffin-embedded sections) - Anti-Tissue Factor antibody [EPR20369] (ab211016)

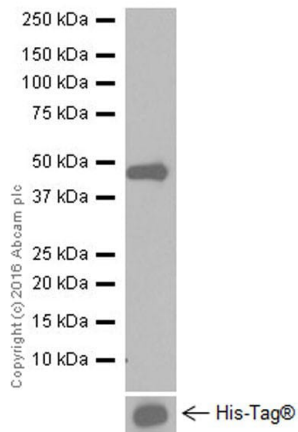
Immunohistochemical analysis of paraffin-embedded human placenta tissue labeling Tissue Factor with ab211016 at 1/50 dilution, followed by Rabbit specific IHC polymer detection kit HRP/DAB (**ab209101**) Ready to use.

Cytoplasmic staining on human placenta is observed [PMID: 2237820].

Counter stained with Hematoxylin.

Secondary antibody only control: Used PBS instead of primary antibody, secondary antibody is Rabbit specific IHC polymer detection kit HRP/DAB (**ab209101**) Ready to use.

Perform heat mediated antigen retrieval with Tris/EDTA buffer pH 9.0 before commencing with IHC staining protocol.



Western blot - Anti-Tissue Factor antibody [EPR20369] (ab211016)

Anti-Tissue Factor antibody [EPR20369] (ab211016) at 1/1000 dilution + Human Tissue Factor His-tagged recombinant protein (aa34-251) at 0.01 μ g

Secondary

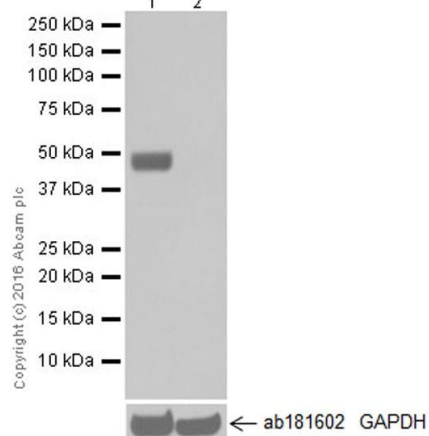
Goat Anti-Rabbit IgG H&L (HRP) ([ab97051](#)) at 1/100000 dilution

Predicted band size: 33 kDa

Observed band size: 42 kDa

Exposure time: 15 seconds

Blocking/Dilution buffer: 5% NFDm/TBST.



Western blot - Anti-Tissue Factor antibody [EPR20369] (ab211016)

All lanes : Anti-Tissue Factor antibody [EPR20369] (ab211016) at 1/5000 dilution

Lane 1 : MDA-MB-231 (Human breast adenocarcinoma cell line) whole cell lysate

Lane 2 : MCF7 (Human breast adenocarcinoma cell line) whole cell lysate

Lysates/proteins at 10 μ g per lane.

Secondary

All lanes : Goat Anti-Rabbit IgG H&L (HRP) ([ab97051](#)) at 1/100000 dilution

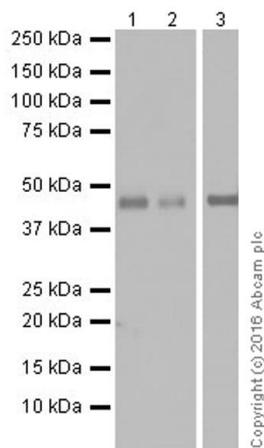
Predicted band size: 33 kDa

Observed band size: 42 kDa

Exposure time: 15 seconds

Blocking/Dilution buffer: 5% NFDm/TBST.

MCF7 is a negative control (PMID: 24137414).



Western blot - Anti-Tissue Factor antibody [EPR20369] (ab211016)

Lanes 1-2 : Anti-Tissue Factor antibody [EPR20369] (ab211016) at 1/1000 dilution

Lane 3 : Anti-Tissue Factor antibody [EPR20369] (ab211016) at 1/10000 dilution

Lane 1 : Human fetal kidney lysate

Lane 2 : Human lung cancer lysate

Lane 3 : U-87 MG (Human glioblastoma-astrocytoma epithelial cell line) whole cell lysate

Lysates/proteins at 20 µg per lane.

Secondary

All lanes : Goat Anti-Rabbit IgG H&L (HRP) ([ab97051](#)) at 1/100000 dilution

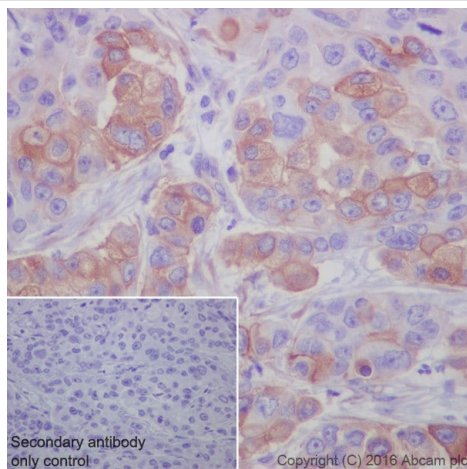
Predicted band size: 33 kDa

Observed band size: 42 kDa

Exposure time: 3 minutes

Blocking/Dilution buffer: 5% NFDm/TBST.

The observed molecular weight is consistent with the literature (PMID: 7992837).



Immunohistochemistry (Formalin/PFA-fixed paraffin-embedded sections) - Anti-Tissue Factor antibody [EPR20369] (ab211016)

Immunohistochemical analysis of paraffin-embedded human pancreas cancer tissue labeling Tissue Factor with ab211016 at 1/50 dilution, followed by Rabbit specific IHC polymer detection kit HRP/DAB ([ab209101](#)) Ready to use.

Membranous and cytoplasmic staining on tumor cells of human pancreas cancer is observed [PMID: 7648165].

Counter stained with Hematoxylin.

Secondary antibody only control: Used PBS instead of primary antibody, secondary antibody is Rabbit specific IHC polymer detection kit HRP/DAB ([ab209101](#)) Ready to use.

Perform heat mediated antigen retrieval with Tris/EDTA buffer pH 9.0 before commencing with IHC staining protocol.

Why choose a recombinant antibody?



Research with confidence
Consistent and reproducible results



Long-term and scalable supply
Recombinant technology



Success from the first experiment
Confirmed specificity



Ethical standards compliant
Animal-free production

Anti-Tissue Factor antibody [EPR20369] (ab211016)

Please note: All products are "FOR RESEARCH USE ONLY. NOT FOR USE IN DIAGNOSTIC PROCEDURES"

Our Abpromise to you: Quality guaranteed and expert technical support

- Replacement or refund for products not performing as stated on the datasheet
- Valid for 12 months from date of delivery
- Response to your inquiry within 24 hours
- We provide support in Chinese, English, French, German, Japanese and Spanish
- Extensive multi-media technical resources to help you
- We investigate all quality concerns to ensure our products perform to the highest standards

If the product does not perform as described on this datasheet, we will offer a refund or replacement. For full details of the Abpromise, please visit <https://www.abcam.co.jp/abpromise> or contact our technical team.

Terms and conditions

- Guarantee only valid for products bought direct from Abcam or one of our authorized distributors