

Anti-TIMP4 antibody ab58425

13 References [画像数 2](#)

製品の概要

製品名	Anti-TIMP4 antibody
製品の詳細	Rabbit polyclonal to TIMP4
由来種	Rabbit
アプリケーション	適用あり: ELISA, IHC-Fr, IHC-P, WB
種交差性	交差種: Mouse, Rat, Human
免疫原	Synthetic peptide derived from C terminal residues of human TIMP4
特記事項	<p>The Life Science industry has been in the grips of a reproducibility crisis for a number of years. Abcam is leading the way in addressing this with our range of recombinant monoclonal antibodies and knockout edited cell lines for gold-standard validation. Please check that this product meets your needs before purchasing.</p> <p>If you have any questions, special requirements or concerns, please send us an inquiry and/or contact our Support team ahead of purchase. Recommended alternatives for this product can be found below, along with publications, customer reviews and Q&As</p>

製品の特性

製品の状態	Liquid
保存方法	Store at -20°C. Stable for 12 months at -20°C
バッファー	<p>pH: 7.40</p> <p>Preservative: 0.02% Sodium azide</p> <p>Constituents: PBS, 50% Glycerol, 0.87% Sodium chloride</p>
精製度	Without Mg+2 and Ca+2
特記事項 (精製)	Immunogen affinity purified
	ab58425 was affinity purified from rabbit antiserum by affinity chromatography using epitope specific immunogen.
ポリモノ	ポリクローナル
アイソタイプ	IgG

アプリケーション

The Abpromise guarantee

Abpromise保証は、次のテスト済みアプリケーションにおけるab58425の使用に適用されます

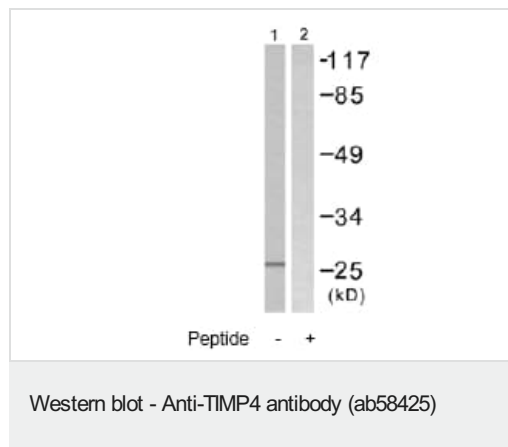
アプリケーションノートには、推奨の開始希釈率がありますが、適切な希釈率につきましてはご検討ください。

アプリケーション	Abreviews	特記事項
ELISA		Use at an assay dependent concentration.
IHC-Fr		Use at an assay dependent concentration. PubMed: 23525608
IHC-P		Use at an assay dependent concentration.
WB		1/500 - 1/1000. Detects a band of approximately 26 kDa (predicted molecular weight: 26 kDa).

ターゲット情報

機能	Complexes with metalloproteinases (such as collagenases) and irreversibly inactivates them by binding to their catalytic zinc cofactor. Known to act on MMP-1, MMP-2, MMP-3, MMP-7 and MMP-9.
組織特異性	Abundant in heart and present at low levels in many other tissues.
配列類似性	Belongs to the protease inhibitor I35 (TIMP) family. Contains 1 NTR domain.
細胞内局在	Secreted.

画像



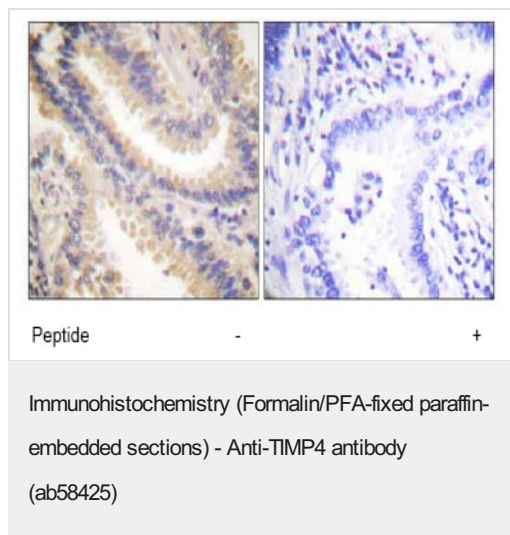
All lanes : Anti-TIMP4 antibody (ab58425) at 1/500 dilution

Lane 1 : NIH3T3 cell extract

Lane 2 : NIH3T3 cell extract with immunising peptide

Predicted band size: 26 kDa

Observed band size: 26 kDa



ab58425, at 1/50 dilution, staining TIMP4 in paraffin embedded human lung carcinoma tissue by Immunohistochemistry, in the absence (left image) or presence (right image) of the immunising peptide.

Please note: All products are "FOR RESEARCH USE ONLY. NOT FOR USE IN DIAGNOSTIC PROCEDURES"

Our Abpromise to you: Quality guaranteed and expert technical support

- Replacement or refund for products not performing as stated on the datasheet
- Valid for 12 months from date of delivery
- Response to your inquiry within 24 hours
- We provide support in Chinese, English, French, German, Japanese and Spanish
- Extensive multi-media technical resources to help you
- We investigate all quality concerns to ensure our products perform to the highest standards

If the product does not perform as described on this datasheet, we will offer a refund or replacement. For full details of the Abpromise, please visit <https://www.abcam.co.jp/abpromise> or contact our technical team.

Terms and conditions

- Guarantee only valid for products bought direct from Abcam or one of our authorized distributors