

Anti-TIMP3 antibody - Carboxyterminal end ab39185

★★★★★ [1 Abreviews](#) [4 References](#) [画像数 3](#)

製品の概要

| | |
|--------------|---|
| 製品名 | Anti-TIMP3 antibody - Carboxyterminal end |
| 製品の詳細 | Rabbit polyclonal to TIMP3 - Carboxyterminal end |
| 由来種 | Rabbit |
| 特異性 | This antibody recognizes both the glycosylated and unglycosylated forms of TIMP3, and works against native or reduced TIMP3. It does not cross react with the other TIMP family members (TIMP1, TIMP2, TIMP4). |
| アプリケーション | 適用あり: WB, ICC/IF, IHC-P |
| 種交差性 | 交差種: Human |
| 免疫原 | Synthetic peptide based on the carboxyterminal region of Human TIMP3. |
| ポジティブ・コントロール | Human amd mouse TIMP3. |
| 特記事項 | <p>The Life Science industry has been in the grips of a reproducibility crisis for a number of years. Abcam is leading the way in addressing this with our range of recombinant monoclonal antibodies and knockout edited cell lines for gold-standard validation. Please check that this product meets your needs before purchasing.</p> <p>If you have any questions, special requirements or concerns, please send us an inquiry and/or contact our Support team ahead of purchase. Recommended alternatives for this product can be found below, along with publications, customer reviews and Q&As</p> |

製品の特性

| | |
|--------|--|
| 製品の状態 | Liquid |
| 保存方法 | Shipped at 4°C. Store at +4°C short term (1-2 weeks). Upon delivery aliquot. Store at -20°C long term. |
| バッファー | Preservative: 0.05% Sodium azide Constituent: 50% Glycerol |
| 精製度 | Immunogen affinity purified |
| ポリ/モノ | ポリクローナル |
| アイソタイプ | IgG |

アプリケーション

The Abpromise guarantee

Abpromise保証は、次のテスト済みアプリケーションにおけるab39185の使用に適用されます

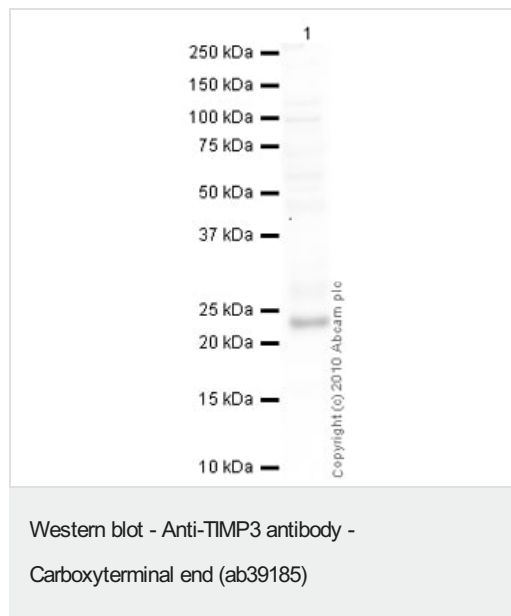
アプリケーションノートには、推奨の開始希釈率がありますが、適切な希釈率につきましてはご検討ください。

| アプリケーション | Abreviews | 特記事項 |
|----------|-----------|---|
| WB | | 1/1000 - 1/5000. Detects a band of approximately 21 kDa (predicted molecular weight: 24 kDa). Used under non reducing conditions. |
| ICC/IF | | Use a concentration of 1 µg/ml. |
| IHC-P | ★★★★★ (1) | Use at an assay dependent concentration. |

ターゲット情報

| | |
|-------|---|
| 機能 | Complexes with metalloproteinases (such as collagenases) and irreversibly inactivates them by binding to their catalytic zinc cofactor. May form part of a tissue-specific acute response to remodeling stimuli. Known to act on MMP-1, MMP-2, MMP-3, MMP-7, MMP-9, MMP-13, MMP-14 and MMP-15. |
| 関連疾患 | Defects in TIMP3 are the cause of Sorsby fundus dystrophy (SFD) [MIM:136900]. SFD is a rare autosomal dominant macular disorder with an age of onset in the fourth decade. It is characterized by loss of central vision from subretinal neovascularization and atrophy of the ocular tissues. Generally, macular disciform degeneration develops in the patients eye within 6 months to 6 years. |
| 配列類似性 | Belongs to the protease inhibitor I35 (TIMP) family. Contains 1 NTR domain. |
| 細胞内局在 | Secreted > extracellular space > extracellular matrix. |

画像



Anti-TIMP3 antibody - Carboxyterminal end (ab39185) at 1 µg/ml + Lung (Human) Tissue Lysate at 10 µg

Secondary

Goat Anti-Rabbit IgG H&L (HRP) preadsorbed ([ab97080](#)) at 1/5000 dilution

Developed using the ECL technique.

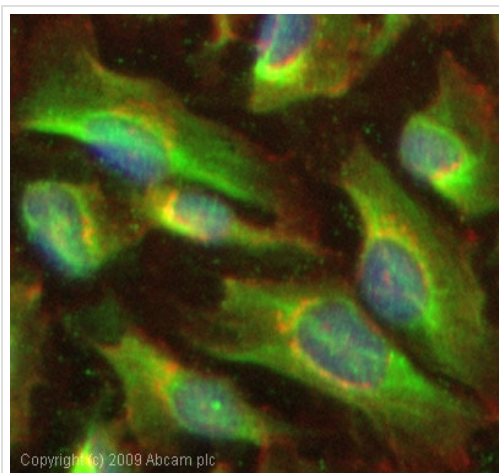
Performed under reducing conditions.

Predicted band size: 24 kDa

Observed band size: 24 kDa

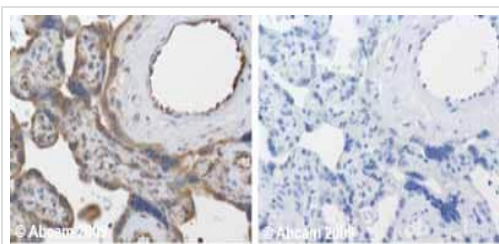
Additional bands at: 100 kDa. We are unsure as to the identity of these extra bands.

Exposure time: 90 seconds



Immunocytochemistry/ Immunofluorescence - Anti-TIMP3 antibody - Carboxyterminal end (ab39185)

ICC/IF image of ab39185 stained HeLa cells. The cells were 100% methanol fixed (5 min) and then incubated in 1%BSA / 10% normal goat serum / 0.3M glycine in 0.1% PBS-Tween for 1h to permeabilise the cells and block non-specific protein-protein interactions. The cells were then incubated with the antibody (ab39185, 1µg/ml) overnight at +4°C. The secondary antibody (green) was Alexa Fluor® 488 goat anti-rabbit IgG (H+L) used at a 1/1000 dilution for 1h. Alexa Fluor® 594 WGA was used to label plasma membranes (red) at a 1/200 dilution for 1h. DAPI was used to stain the cell nuclei (blue) at a concentration of 1.43µM.



Immunohistochemistry (Formalin/PFA-fixed paraffin-embedded sections) - Anti-TIMP3 antibody - Carboxyterminal end (ab39185)

Ab39185 staining Human normal placenta. Staining is localized to the cytoplasm or excreted.

Left panel: with primary antibody at 2 µg/ml. Right panel: isotype control.

Sections were stained using an automated system DAKO Autostainer Plus , at room temperature. Sections were rehydrated and antigen retrieved with the Dako 3-in-1 AR buffer citrate EDTA pH 9.0 in a DAKO PT Link. Slides were peroxidase blocked in 3% H₂O₂ in methanol for 10 minutes. They were then blocked with Dako Protein block for 10 minutes (containing casein 0.25% in PBS), then incubated with primary antibody for 20 minutes, and detected with Dako Envision Flex amplification kit for 30 minutes. Colorimetric detection was completed with diaminobenzidine for 5 minutes. Slides were counterstained with Haematoxylin and coverslipped under DePeX. Please note that for manual staining we recommend to optimize the primary antibody concentration and incubation time (overnight incubation), and amplification may be required.

Please note: All products are "FOR RESEARCH USE ONLY. NOT FOR USE IN DIAGNOSTIC PROCEDURES"

Our Abpromise to you: Quality guaranteed and expert technical support

- Replacement or refund for products not performing as stated on the datasheet

- Valid for 12 months from date of delivery
- Response to your inquiry within 24 hours
- We provide support in Chinese, English, French, German, Japanese and Spanish
- Extensive multi-media technical resources to help you
- We investigate all quality concerns to ensure our products perform to the highest standards

If the product does not perform as described on this datasheet, we will offer a refund or replacement. For full details of the Abpromise, please visit <https://www.abcam.co.jp/abpromise> or contact our technical team.

Terms and conditions

- Guarantee only valid for products bought direct from Abcam or one of our authorized distributors