

Anti-TIMP1 antibody - Carboxyterminal end ab38978

★★★★☆ **4 Abreviews** **34 References** 画像数 3

製品の概要

製品名	Anti-TIMP1 antibody - Carboxyterminal end
製品の詳細	Rabbit polyclonal to TIMP1 - Carboxyterminal end
由来種	Rabbit
特異性	This antibody recognizes both reduced and non reduced TIMP1 protein, but does not cross react with other TIMP family members (TIMP2, TIMP3, TIMP4).
アプリケーション	適用あり: WB, Sandwich ELISA
種交差性	交差種: Human
免疫原	Synthetic peptide based on the carboxyterminal region of human TIMP1.
特記事項	<p>The Life Science industry has been in the grips of a reproducibility crisis for a number of years. Abcam is leading the way in addressing this with our range of recombinant monoclonal antibodies and knockout edited cell lines for gold-standard validation. Please check that this product meets your needs before purchasing.</p> <p>If you have any questions, special requirements or concerns, please send us an inquiry and/or contact our Support team ahead of purchase. Recommended alternatives for this product can be found below, along with publications, customer reviews and Q&As</p>

製品の特性

製品の状態	Liquid
保存方法	Shipped at 4°C. Store at +4°C short term (1-2 weeks). Upon delivery aliquot. Store at -20°C long term.
バッファー	Preservative: 0.05% Sodium azide Constituent: 50% Glycerol
精製度	Immunogen affinity purified
ポリ/モノ	ポリクローナル
アイソタイプ	IgG

アプリケーション

The Abpromise guarantee

Abpromise保証は、 次のテスト済みアプリケーションにおけるab38978の使用に適用されます

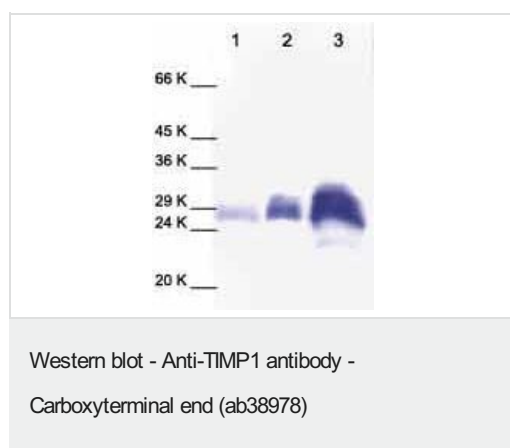
アプリケーションノートには、推奨の開始希釈率がありますが、適切な希釈率につきましてはご確認ください。

アプリケーション	Abreviews	特記事項
WB	★★★★★ (3)	1/1000 - 1/5000. Detects a band of approximately 29 kDa (predicted molecular weight: 23 kDa). Recommended starting dilution of 1/1000 when using colorimetric substrates such as BCIP/NBT and 1/5000 for chemiluminescent substrates. Detects a band of approximately 29 kDa when used against the reduced protein. Higher concentration of antibody may be needed for non human samples. Dilution optimised using Chromogenic
Sandwich ELISA		Use a concentration of 0.5 µg/ml. For sandwich ELISA, use this antibody as Detection at 0.5µg/ml with ab28261 as Capture.

ターゲット情報

機能	Complexes with metalloproteinases (such as collagenases) and irreversibly inactivates them by binding to their catalytic zinc cofactor. Also mediates erythropoiesis in vitro; but, unlike IL-3, it is species-specific, stimulating the growth and differentiation of only human and murine erythroid progenitors. Known to act on MMP-1, MMP-2, MMP-3, MMP-7, MMP-8, MMP-9, MMP-10, MMP-11, MMP-12, MMP-13 and MMP-16. Does not act on MMP-14.
配列類似性	Belongs to the protease inhibitor I35 (TIMP) family. Contains 1 NTR domain.
翻訳後修飾	The activity of TIMP1 is dependent on the presence of disulfide bonds.
細胞内局在	Secreted.

画像



All lanes : Anti-TIMP1 antibody - Carboxyterminal end (ab38978) at 1/1000 dilution

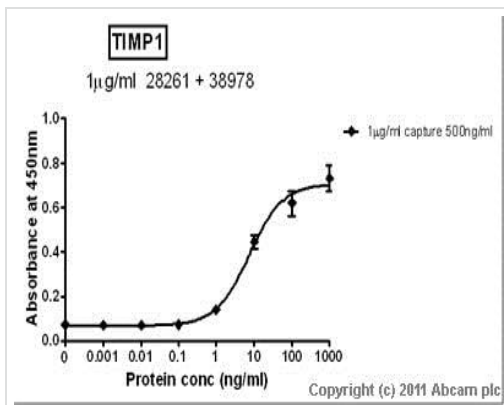
Lane 1 : Human TIMP1

Lane 2 : Cell media from human chondrosarcoma (no treatment)

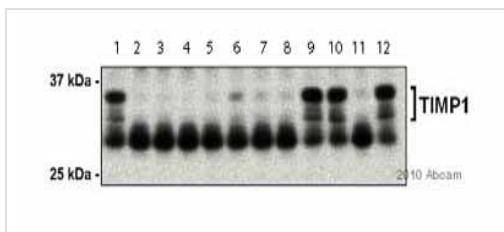
Lane 3 : Cell media from human chondrosarcoma (treated with TPA)

Predicted band size: 23 kDa

Observed band size: 29 kDa



Sandwich ELISA - Anti-TIMP1 antibody -
Carboxyterminal end (**ab38978**)



Western blot - Anti-TIMP1 antibody -
Carboxyterminal end (**ab38978**)

Image courtesy of Koji Ueda by Abreview

Each lane corresponds to a distinct lung adenocarcinoma patient sample. The primary antibody was used at 1/3000 dilution. 10µg/ml lysate has been added per lane. A sheep anti-rabbit monoclonal conjugated to HRP was used as the secondary antibody at 1/10,000 dilution.

Detection method used was Western Lightning. 3 minutes.
Performed under reducing conditions.

Samples blocked using 5% BSA for 1 hour at 25°C.

Non-specific band at 27kDa is thought to be Ig light chain.

Please note: All products are "FOR RESEARCH USE ONLY. NOT FOR USE IN DIAGNOSTIC PROCEDURES"

Our Abpromise to you: Quality guaranteed and expert technical support

- Replacement or refund for products not performing as stated on the datasheet
- Valid for 12 months from date of delivery
- Response to your inquiry within 24 hours
- We provide support in Chinese, English, French, German, Japanese and Spanish
- Extensive multi-media technical resources to help you
- We investigate all quality concerns to ensure our products perform to the highest standards

If the product does not perform as described on this datasheet, we will offer a refund or replacement. For full details of the Abpromise, please visit <https://www.abcam.co.jp/abpromise> or contact our technical team.

Terms and conditions

- Guarantee only valid for products bought direct from Abcam or one of our authorized distributors