

Anti-TIMP1 antibody ab61224

[60 References](#) [画像数 1](#)

製品の概要

製品名	Anti-TIMP1 antibody
製品の詳細	Rabbit polyclonal to TIMP1
由来種	Rabbit
アプリケーション	適用あり: WB
種交差性	交差種: Human 交差が予測される動物種: Mouse 
免疫原	Synthetic peptide derived from the internal region of human TIMP1.
特記事項	<p>This antibody has been used successfully in mouse tissue in a publication, however our WB testing data shows non-reactivity to mouse and we can not guarantee reactivity with mouse.</p> <p>The Life Science industry has been in the grips of a reproducibility crisis for a number of years. Abcam is leading the way in addressing this with our range of recombinant monoclonal antibodies and knockout edited cell lines for gold-standard validation. Please check that this product meets your needs before purchasing.</p> <p>If you have any questions, special requirements or concerns, please send us an inquiry and/or contact our Support team ahead of purchase. Recommended alternatives for this product can be found below, along with publications, customer reviews and Q&As</p>

製品の特性

製品の状態	Liquid
保存方法	Shipped at 4°C. Upon delivery aliquot and store at -20°C. Avoid freeze / thaw cycles.
バッファー	pH: 7 Preservative: 0.02% Sodium azide Constituents: PBS, 50% Glycerol, 0.87% Sodium chloride
精製度	Immunogen affinity purified
ポリ/モノ	ポリクローナル
アイソタイプ	IgG

アプリケーション

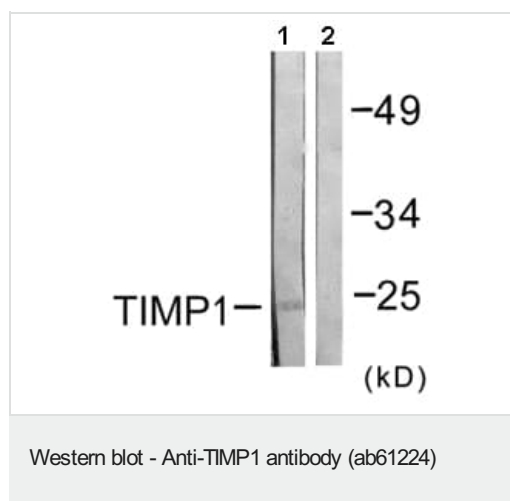
The Abpromise guarantee **Abpromise保証は、次のテスト済みアプリケーションにおけるab61224の使用に適用されます**
 アプリケーションノートには、推奨の開始希釈率がありますが、適切な希釈率につきましてはご検討ください。

アプリケーション	Abreviews	特記事項
WB		1/500 - 1/1000. Detects a band of approximately 23 kDa (predicted molecular weight: 23 kDa).

ターゲット情報

機能	Complexes with metalloproteinases (such as collagenases) and irreversibly inactivates them by binding to their catalytic zinc cofactor. Also mediates erythropoiesis in vitro; but, unlike IL-3, it is species-specific, stimulating the growth and differentiation of only human and murine erythroid progenitors. Known to act on MMP-1, MMP-2, MMP-3, MMP-7, MMP-8, MMP-9, MMP-10, MMP-11, MMP-12, MMP-13 and MMP-16. Does not act on MMP-14.
配列類似性	Belongs to the protease inhibitor I35 (TIMP) family. Contains 1 NTR domain.
翻訳後修飾	The activity of TIMP1 is dependent on the presence of disulfide bonds.
細胞内局在	Secreted.

画像



All lanes : Anti-TIMP1 antibody (ab61224) at 1/500 dilution

Lane 1 : extracts from 293 cells

Lane 2 : extracts from 293 cells with the immunizing peptide

Predicted band size: 23 kDa

Observed band size: 23 kDa

Please note: All products are "FOR RESEARCH USE ONLY. NOT FOR USE IN DIAGNOSTIC PROCEDURES"

Our Abpromise to you: Quality guaranteed and expert technical support

- Replacement or refund for products not performing as stated on the datasheet
- Valid for 12 months from date of delivery
- Response to your inquiry within 24 hours
- We provide support in Chinese, English, French, German, Japanese and Spanish
- Extensive multi-media technical resources to help you

- We investigate all quality concerns to ensure our products perform to the highest standards

If the product does not perform as described on this datasheet, we will offer a refund or replacement. For full details of the Abpromise, please visit <https://www.abcam.co.jp/abpromise> or contact our technical team.

Terms and conditions

- Guarantee only valid for products bought direct from Abcam or one of our authorized distributors