

# Anti-TIMM8A/DDP antibody ab88311

画像数 3

### 製品の概要

---

製品名	Anti-TIMM8A/DDP antibody
製品の詳細	Mouse polyclonal to TIMM8A/DDP
由来種	Mouse
アプリケーション	<b>適用あり:</b> WB, ICC/IF
種交差性	<b>交差種:</b> Human
免疫原	Recombinant full length protein within Human TIMM8A/DDP. The exact immunogen sequence used to generate this antibody is proprietary information. If additional detail on the immunogen is needed to determine the suitability of the antibody for your needs, please <b>contact</b> our Scientific Support team to discuss your requirements. Database link: <a href="#">NP_004076.1</a>
ポジティブ・コントロール	WB: HepG2 cell lysate and TIMM8A/DDP transfected 293T cell lysate. ICC/IF: Hela cell
特記事項	<p>The Life Science industry has been in the grips of a reproducibility crisis for a number of years. Abcam is leading the way in addressing this with our range of recombinant monoclonal antibodies and knockout edited cell lines for gold-standard validation. Please check that this product meets your needs before purchasing.</p> <p>If you have any questions, special requirements or concerns, please send us an inquiry and/or contact our Support team ahead of purchase. Recommended alternatives for this product can be found below, along with publications, customer reviews and Q&amp;As</p>

### 製品の特性

---

製品の状態	Liquid
保存方法	Shipped at 4°C. Upon delivery aliquot and store at -20°C or -80°C. Avoid repeated freeze / thaw cycles.
バッファー	pH: 7.40 Constituent: 100% PBS
精製度	Protein A purified
ポリモノ	ポリクローナル
アイソタイプ	IgG

## アプリケーション

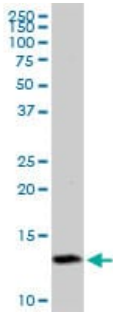
The Abpromise guarantee Abpromise保証は、次のテスト済みアプリケーションにおけるab88311の使用に適用されず  
アプリケーションノートには、推奨の開始希釈率がありますが、適切な希釈率につきましてはご確認ください。

アプリケーション	Abreviews	特記事項
WB		Use a concentration of 1 µg/ml. Predicted molecular weight: 11 kDa.
ICC/IF		Use a concentration of 10 µg/ml.

## ターゲット情報

機能	Mitochondrial intermembrane chaperone that participates in the import and insertion of some multi-pass transmembrane proteins into the mitochondrial inner membrane. Also required for the transfer of beta-barrel precursors from the TOM complex to the sorting and assembly machinery (SAM complex) of the outer membrane. Acts as a chaperone-like protein that protects the hydrophobic precursors from aggregation and guide them through the mitochondrial intermembrane space. The TIMM8-TIMM13 complex mediates the import of proteins such as TIMM23, SLC25A12/ARALAR1 and SLC25A13/ARALAR2, while the predominant TIMM9-TIMM10 70 kDa complex mediates the import of much more proteins. Probably necessary for normal neurologic development.
組織特異性	Highly expressed in fetal and adult brain, followed by fetal lung, liver and kidney. Also expressed in heart, placenta, lung, liver, kidney, pancreas, skeletal muscle and heart.
関連疾患	Defects in TIMM8A are the cause of Mohr-Tranebjaerg syndrome (MTS) [MIM:304700]; also known as dystonia-deafness syndrome (DDS) or X-linked progressive deafness type 1 (DFN-1). It is a recessive neurodegenerative syndrome characterized by postlingual progressive sensorineural deafness as the first presenting symptom in early childhood, followed by progressive dystonia, spasticity, dysphagia, mental deterioration, paranoia and cortical blindness. Defects in TIMM8A are the cause of Jensen syndrome (JENSS) [MIM:311150]; also known as opticoacoustic nerve atrophy with dementia. This X-linked disease is characterized by deafness, blindness and muscle weakness.
配列類似性	Belongs to the small Tim family.
ドメイン	The twin CX3C motif contains 4 conserved Cys residues that form 2 disulfide bonds in the mitochondrial intermembrane space. However, during the transit of TIMM8A from cytoplasm into mitochondrion, the Cys residues probably coordinate zinc, thereby preventing folding and allowing its transfer across mitochondrial outer membrane.
細胞内局在	Mitochondrion inner membrane.

## 画像



Western blot - Anti-TIMM8A/DDP antibody (ab88311)

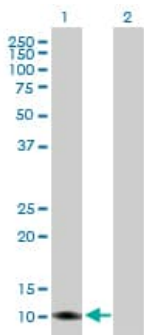
Anti-TIMM8A/DDP antibody (ab88311) at 1  $\mu$ g/ml + HepG2 cell lysate at 50  $\mu$ g

**Secondary**

Goat Anti-Mouse IgG (H&L)-HRP Conjugate at 1/5000 dilution

**Predicted band size:** 11 kDa

**Observed band size:** 13 kDa



Western blot - Anti-TIMM8A/DDP antibody (ab88311)

**All lanes :** Anti-TIMM8A/DDP antibody (ab88311) at 1  $\mu$ g/ml

**Lane 1 :** TIMM8A/DDP transfected 293T cell lysate

**Lane 2 :** non transfected 293T cell lysate

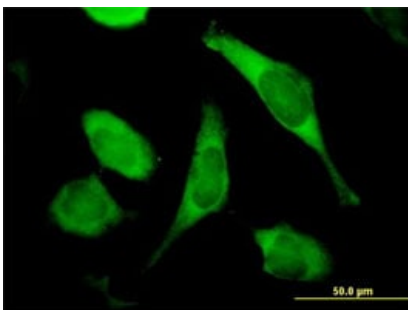
Lysates/proteins at 50  $\mu$ g per lane.

**Secondary**

**All lanes :** Goat Anti-Mouse IgG (H&L)-HRP Conjugate at 1/5000 dilution

**Predicted band size:** 11 kDa

**Observed band size:** 11 kDa



Immunocytochemistry/ Immunofluorescence - Anti-TIMM8A/DDP antibody (ab88311)

ab88311, at 10  $\mu$ g/ml, staining TIMM8A/DDP in HeLa cell by Immunofluorescence.

## **Our Abpromise to you: Quality guaranteed and expert technical support**

---

- Replacement or refund for products not performing as stated on the datasheet
- Valid for 12 months from date of delivery
- Response to your inquiry within 24 hours
  
- We provide support in Chinese, English, French, German, Japanese and Spanish
- Extensive multi-media technical resources to help you
- We investigate all quality concerns to ensure our products perform to the highest standards

If the product does not perform as described on this datasheet, we will offer a refund or replacement. For full details of the Abpromise, please visit <https://www.abcam.co.jp/abpromise> or contact our technical team.

## **Terms and conditions**

---

- Guarantee only valid for products bought direct from Abcam or one of our authorized distributors