


Anti-TIM50 antibody [EPR5785] ab109436

リコンビナント RabMAb[®]

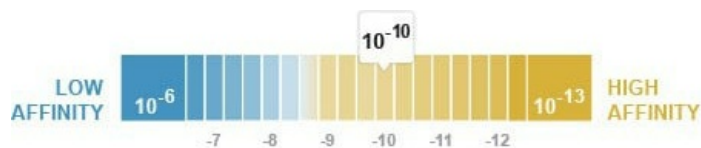
★★★★★ [2 Abreviews](#) [5 References](#) [画像数 3](#)

製品の概要

製品名	Anti-TIM50 antibody [EPR5785]
製品の詳細	Rabbit monoclonal [EPR5785] to TIM50
由来種	Rabbit
アプリケーション	適用あり: WB 適用なし: Flow Cyt, ICC/IF or IHC-P
種交差性	交差種: Human 交差が予測される動物種: Mouse, Rat 
免疫原	Synthetic peptide. This information is proprietary to Abcam and/or its suppliers.
ポジティブ・コントロール	293T, SH-SY5Y, HepG2, and HeLa whole cell lysate (ab150035)
特記事項	This product is a recombinant monoclonal antibody, which offers several advantages including: <ul style="list-style-type: none"> - High batch-to-batch consistency and reproducibility - Improved sensitivity and specificity - Long-term security of supply - Animal-free production For more information see here . Our RabMAb [®] technology is a patented hybridoma-based technology for making rabbit monoclonal antibodies. For details on our patents, please refer to RabMAb[®] patents .

製品の特性

製品の状態	Liquid
保存方法	Shipped at 4°C. Upon delivery aliquot and store at -20°C. Avoid freeze / thaw cycles.
解離定数 (K _D 値)	K _D = 1.56 x 10 ⁻¹⁰ M



[Learn more about K_D](#)

バッファー pH: 7.20

Preservative: 0.05% Sodium azide
Constituents: 0.1% BSA, 40% Glycerol (glycerin, glycerine), 9.85% Tris glycine, 50% Tissue culture supernatant

精製度 Protein A purified
ポリ/モノ モノクローナル
クローン名 EPR5785
アイソタイプ IgG

アプリケーション

The Abpromise guarantee Abpromise保証は、次のテスト済みアプリケーションにおけるab109436の使用に適用されます
アプリケーションノートには、推奨の開始希釈率がありますが、適切な希釈率につきましてはご検討ください。

アプリケーション	Abreviews	特記事項
WB	★★★★★ (1)	1/1000 - 1/10000. Predicted molecular weight: 40 kDa.

追加情報 Is unsuitable for Flow Cyt, ICC/IF or IHC-P.

ターゲット情報

機能 Essential component of the TIM23 complex, a complex that mediates the translocation of transit peptide-containing proteins across the mitochondrial inner membrane. Has some phosphatase activity in vitro; however such activity may not be relevant in vivo. Isoform 2 may participate in the release of snRNPs and SMN from the Cajal body.

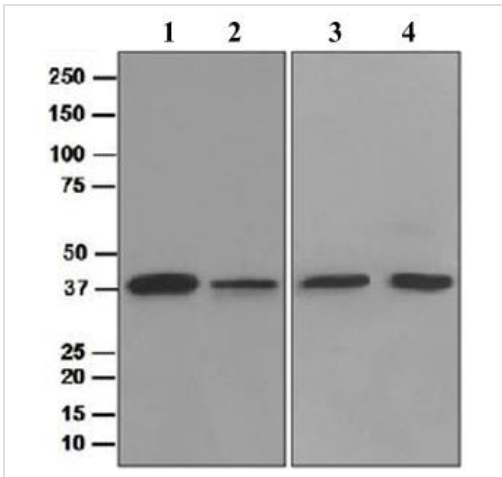
組織特異性 Widely expressed. Expressed at higher level in brain, kidney and liver (at protein level).

配列類似性 Belongs to the TIM50 family.
Contains 1 FCP1 homology domain.

ドメイン The FCP1 homology domain does not contain the canonical D-x-D-x-[TV] active site, suggesting that it probably does not display phosphatase activity in vivo.

細胞内局在 Mitochondrion inner membrane and Nucleus speckle. Nuclear and enriched in speckles with snRNPs.

画像



Western blot - Anti-TIM50 antibody [EPR5785]
(ab109436)

All lanes : Anti-TIM50 antibody [EPR5785] (ab109436) at 1/1000 dilution

Lane 1 : HEK-293T (Human epithelial cell line from embryonic kidney transformed with large T antigen) whole cell lysate

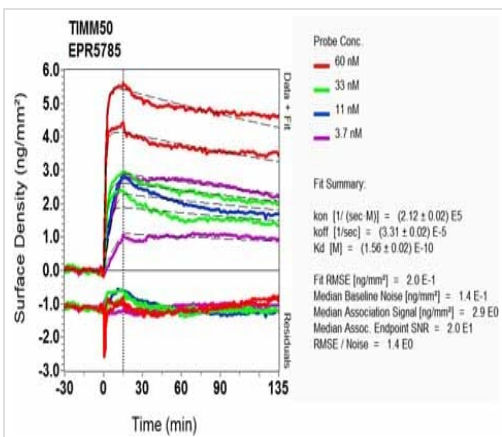
Lane 2 : SH-SY5Y (Human neuroblastoma cell line from bone marrow) whole cell lysate

Lane 3 : Hep G2 (Human liver hepatocellular carcinoma cell line) whole cell lysate

Lane 4 : HeLa (Human cervix adenocarcinoma epithelial cell) whole cell lysate

Lysates/proteins at 10 µg per lane.

Predicted band size: 40 kDa







OI-RD Scanning - Anti-TIM50 antibody [EPR5785]
(ab109436)

Equilibrium dissociation constant (K_D)

Learn more about K_D

[Click here to learn more about \$K_D\$](#)

Why choose a recombinant antibody?

 <p>Research with confidence Consistent and reproducible results</p>	 <p>Long-term and scalable supply Recombinant technology</p>
 <p>Success from the first experiment Confirmed specificity</p>	 <p>Ethical standards compliant Animal-free production</p>

Anti-TIM50 antibody [EPR5785] (ab109436)

Please note: All products are "FOR RESEARCH USE ONLY. NOT FOR USE IN DIAGNOSTIC PROCEDURES"

Our Abpromise to you: Quality guaranteed and expert technical support

- Replacement or refund for products not performing as stated on the datasheet
- Valid for 12 months from date of delivery
- Response to your inquiry within 24 hours
- We provide support in Chinese, English, French, German, Japanese and Spanish
- Extensive multi-media technical resources to help you
- We investigate all quality concerns to ensure our products perform to the highest standards

If the product does not perform as described on this datasheet, we will offer a refund or replacement. For full details of the Abpromise, please visit <https://www.abcam.co.jp/abpromise> or contact our technical team.

Terms and conditions

- Guarantee only valid for products bought direct from Abcam or one of our authorized distributors