




Anti-TIM50 antibody ab23938

★★★★★ [4 Abreviews](#) [9 References](#) [画像数 1](#)

製品の概要

製品名	Anti-TIM50 antibody
製品の詳細	Goat polyclonal to TIM50
由来種	Goat
アプリケーション	適用あり: WB
種交差性	交差種: Human 交差が予測される動物種: Mouse, Rat, Cow, Dog 
免疫原	Synthetic peptide corresponding to Human TIM50 aa 293-306. Sequence: (C)DVRTVLEHYALEDD <div>  Run BLAST with  Run BLAST with </div>
ポジティブ・コントロール	WB: human heart tissue lysate.
特記事項	<p>The Life Science industry has been in the grips of a reproducibility crisis for a number of years. Abcam is leading the way in addressing this with our range of recombinant monoclonal antibodies and knockout edited cell lines for gold-standard validation. Please check that this product meets your needs before purchasing.</p> <p>If you have any questions, special requirements or concerns, please send us an inquiry and/or contact our Support team ahead of purchase. Recommended alternatives for this product can be found below, along with publications, customer reviews and Q&As</p>

製品の特性

製品の状態	Liquid
保存方法	Shipped at 4°C. Upon delivery aliquot and store at -20°C. Avoid freeze / thaw cycles.
バッファー	pH: 7.30 Preservative: 0.02% Sodium azide Constituents: Tris buffered saline, 0.5% BSA
精製度	Immunogen affinity purified
特記事項 (精製)	Purified by ammonium sulphate precipitation followed by antigen affinity chromatography using the immunizing peptide.
ポリ/モノ	ポリクローナル

アイソタイプ

IgG

アプリケーション

The Abpromise guarantee

Abpromise保証は、次のテスト済みアプリケーションにおけるab23938の使用に適用されます

アプリケーションノートには、推奨の開始希釈率がありますが、適切な希釈率につきましてはご検討ください。

アプリケーション	Abreviews	特記事項
WB	★★★★★ (3)	Use a concentration of 0.5 - 1.5 µg/ml. Detects a band of approximately 40 kDa. 1 hour primary incubation is recommended for this product.

ターゲット情報

機能

Essential component of the TIM23 complex, a complex that mediates the translocation of transit peptide-containing proteins across the mitochondrial inner membrane. Has some phosphatase activity in vitro; however such activity may not be relevant in vivo. Isoform 2 may participate in the release of snRNPs and SMN from the Cajal body.

組織特異性

Widely expressed. Expressed at higher level in brain, kidney and liver (at protein level).

配列類似性

Belongs to the TIM50 family.
Contains 1 FCP1 homology domain.

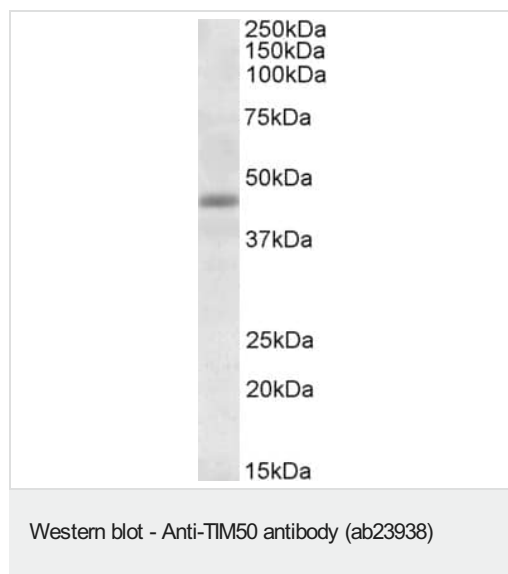
ドメイン

The FCP1 homology domain does not contain the canonical D-x-D-x-[TV] active site, suggesting that it probably does not display phosphatase activity in vivo.

細胞内局在

Mitochondrion inner membrane and Nucleus speckle. Nuclear and enriched in speckles with snRNPs.

画像



Anti-TIM50 antibody (ab23938) at 1 µg/ml + Human heart tissue lysate at 35 µg

Please note: All products are "FOR RESEARCH USE ONLY. NOT FOR USE IN DIAGNOSTIC PROCEDURES"

Our Abpromise to you: Quality guaranteed and expert technical support

- Replacement or refund for products not performing as stated on the datasheet
- Valid for 12 months from date of delivery
- Response to your inquiry within 24 hours
- We provide support in Chinese, English, French, German, Japanese and Spanish
- Extensive multi-media technical resources to help you
- We investigate all quality concerns to ensure our products perform to the highest standards

If the product does not perform as described on this datasheet, we will offer a refund or replacement. For full details of the Abpromise, please visit <https://www.abcam.co.jp/abpromise> or contact our technical team.

Terms and conditions

- Guarantee only valid for products bought direct from Abcam or one of our authorized distributors