

Anti-Tim 2 antibody [RM0134-5B23] ab86480

画像数 1

製品の概要

製品名	Anti-Tim 2 antibody [RM0134-5B23]
製品の詳細	Rat monoclonal [RM0134-5B23] to Tim 2
由来種	Rat
特異性	Does not cross react with TIM1 and TIM3.
アプリケーション	適用あり: WB
種交差性	交差種: Mouse
免疫原	Recombinant full length Mouse protein
ポジティブ・コントロール	WB: Mouse embryonic tissue
特記事項	<p>The Life Science industry has been in the grips of a reproducibility crisis for a number of years. Abcam is leading the way in addressing this with our range of recombinant monoclonal antibodies and knockout edited cell lines for gold-standard validation. Please check that this product meets your needs before purchasing.</p> <p>If you have any questions, special requirements or concerns, please send us an inquiry and/or contact our Support team ahead of purchase. Recommended alternatives for this product can be found below, along with publications, customer reviews and Q&As</p>

製品の特性

製品の状態	Liquid
保存方法	Shipped at 4°C. Upon delivery aliquot and store at -20°C or -80°C. Avoid repeated freeze / thaw cycles.
バッファー	Constituent: PBS
特記事項(精製)	The IgG fraction of culture supernatant was purified by protein A/G affinity chromatography and 0.2µm filtered.
ポリ/モノ	モノクローナル
クローン名	RM0134-5B23
アイソタイプ	IgG2

アプリケーション

The Abpromise guarantee

Abpromise保証は、次のテスト済みアプリケーションにおけるab86480の使用に適用されます

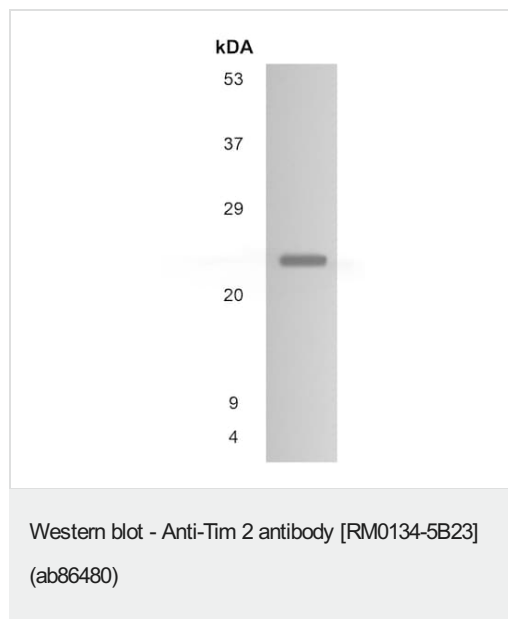
アプリケーションノートには、推奨の開始希釈率がありますが、適切な希釈率につきましてはご検討ください。

アプリケーション	Abreviews	特記事項
WB		1/500 - 1/1000.

ターゲット情報

機能	Probable receptor for SEMA4A involved in the regulation of T-cell function. The interaction with SEMA4A enhances T-cell activation.
配列類似性	Belongs to the immunoglobulin superfamily. TIM family. Contains 1 Ig-like V-type (immunoglobulin-like) domain.
細胞内局在	Cell membrane.

画像



Anti-Tim 2 antibody [RM0134-5B23] (ab86480) at 1/500 dilution +
Mouse embryonic tissue

Please note: All products are "FOR RESEARCH USE ONLY. NOT FOR USE IN DIAGNOSTIC PROCEDURES"

Our Abpromise to you: Quality guaranteed and expert technical support

- Replacement or refund for products not performing as stated on the datasheet
- Valid for 12 months from date of delivery
- Response to your inquiry within 24 hours
- We provide support in Chinese, English, French, German, Japanese and Spanish
- Extensive multi-media technical resources to help you
- We investigate all quality concerns to ensure our products perform to the highest standards

If the product does not perform as described on this datasheet, we will offer a refund or replacement. For full details of the Abpromise, please visit <https://www.abcam.co.jp/abpromise> or contact our technical team.

Terms and conditions

- Guarantee only valid for products bought direct from Abcam or one of our authorized distributors