

Anti-TIM 1 antibody ab78494

★★★★★ **2 Abreviews** **10 References** 画像数 3

製品の概要

製品名	Anti-TIM 1 antibody
製品の詳細	Rabbit polyclonal to TIM 1
由来種	Rabbit
アプリケーション	適用あり: WB, IHC-P
種交差性	交差種: Mouse, Human
免疫原	Synthetic peptide, corresponding to a portion of the amino acids 200-300 of Human TIM 1
ポジティブ・コントロール	Testis tissue
特記事項	<p>The Life Science industry has been in the grips of a reproducibility crisis for a number of years. Abcam is leading the way in addressing this with our range of recombinant monoclonal antibodies and knockout edited cell lines for gold-standard validation. Please check that this product meets your needs before purchasing.</p> <p>If you have any questions, special requirements or concerns, please send us an inquiry and/or contact our Support team ahead of purchase. Recommended alternatives for this product can be found below, along with publications, customer reviews and Q&As</p>

製品の特性

製品の状態	Liquid
保存方法	Shipped at 4°C. Upon delivery aliquot and store at -20°C. Avoid freeze / thaw cycles.
バッファー	Preservative: 0.05% Sodium azide Constituents: 0.05% BSA, PBS
精製度	Protein G purified
ポリ/モノ	ポリクローナル
アイソタイプ	IgG

アプリケーション

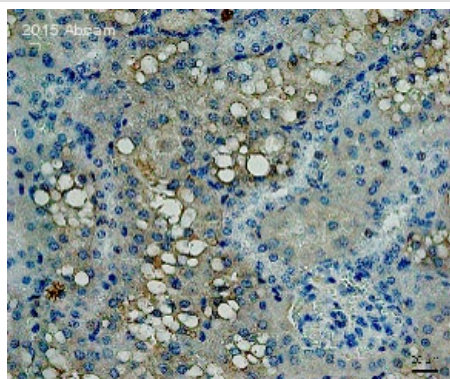
The Abpromise guarantee **Abpromise保証は、**次のテスト済みアプリケーションにおけるab78494の使用に適用されます
アプリケーションノートには、推奨の開始希釈率がありますが、適切な希釈率につきましてはご検討ください。

アプリケーション	Abreviews	特記事項
WB	★★★★★ (1)	Use a concentration of 1 - 3 µg/ml. Predicted molecular weight: 39 kDa.
IHC-P	★★★★★ (1)	Use a concentration of 2.5 - 5 µg/ml.

ターゲット情報

機能	May play a role in T-helper cell development and the regulation of asthma and allergic diseases. Receptor for TIMD4 (By similarity). In case of human hepatitis A virus (HHAV) infection, functions as a cell-surface receptor for the virus. May play a role in kidney injury and repair.
組織特異性	Widely expressed, with highest levels in kidney and testis. Expressed by activated CD4+ T-cells during the development of helper T-cells responses.
配列類似性	Belongs to the immunoglobulin superfamily. TIM family. Contains 1 Ig-like V-type (immunoglobulin-like) domain.
細胞内局在	Membrane.

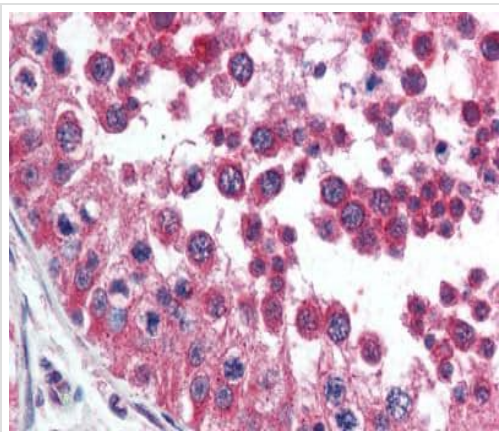
画像



Immunohistochemical analysis of Formaldehyde-fixed murine obese nephric tissue sections, labelling TIM 1 with ab78494 at a dilution of 1/2500 incubated for 12 hours at 4°C in PBS and 2.5% Horse serum. Heat mediated antigen retrieval was with Citrate buffer. Blocking was with 2.5% horse serum incubated for 1 hour at 25°C. Secondary was a horse anti-rabbit polyclonal HRP conjugate used undiluted. Counterstaining against nuclear DNA was with DAPI.

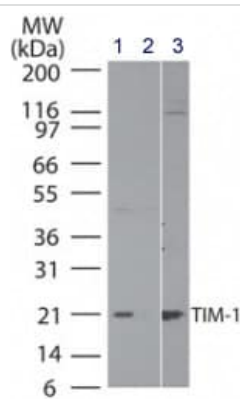
Immunohistochemistry (Formalin/PFA-fixed paraffin-embedded sections) - Anti-TIM 1 antibody (ab78494)

Image is courtesy of an anonymous AbReview.



Immunohistochemistry (Formalin/PFA-fixed paraffin-embedded sections) - Anti-TIM 1 antibody (ab78494)

Immunohistochemical analysis of formalin-fixed, paraffin-embedded Human testis tissue, staining TIM 1 with ab78494 at 5 µg/ml.



Western blot - Anti-TIM 1 antibody (ab78494)

All lanes : Anti-TIM 1 antibody (ab78494) at 3 µg/ml

Lane 1 : Human brain lysate

Lane 2 : Human brain lysate in presence of immunizing peptide

Lane 3 : Mouse brain lysate

Predicted band size: 39 kDa

Please note: All products are "FOR RESEARCH USE ONLY. NOT FOR USE IN DIAGNOSTIC PROCEDURES"

Our Abpromise to you: Quality guaranteed and expert technical support

- Replacement or refund for products not performing as stated on the datasheet
- Valid for 12 months from date of delivery
- Response to your inquiry within 24 hours
- We provide support in Chinese, English, French, German, Japanese and Spanish
- Extensive multi-media technical resources to help you
- We investigate all quality concerns to ensure our products perform to the highest standards

If the product does not perform as described on this datasheet, we will offer a refund or replacement. For full details of the Abpromise, please visit <https://www.abcam.co.jp/abpromise> or contact our technical team.

Terms and conditions

- Guarantee only valid for products bought direct from Abcam or one of our authorized distributors