


Anti-TIM 1 antibody [2B9] ab66062

★★★★★ [1 Abreviews](#) [3 References](#) [画像数 1](#)

製品の概要

製品名	Anti-TIM 1 antibody [2B9]
製品の詳細	Mouse monoclonal [2B9] to TIM 1
由来種	Mouse
アプリケーション	適用あり: WB
種交差性	交差種: Human 交差が予測される動物種: Chimpanzee 
免疫原	Recombinant fragment with tag: KVGGEAGPSV TLPCHYSGAV TSMCWNRGSC SLFTCQNGIV WTNGTHVTYR KDTRYKLLGD LSRRDVSLTIENTAVSDSGV YCCRVEHRGW FNDMKITVSL, corresponding to amino acids 23-123 of Human TIM 1 Run BLAST with ExPASy Run BLAST with NCBI
ポジティブ・コントロール	TIM 1 transfected 293T cell lysate.
特記事項	<p>This product was changed from ascites to tissue culture supernatant on 24th June 2019. Please note that the dilutions may need to be adjusted accordingly. If you have any questions, please do not hesitate to contact our scientific support team.</p> <p>The Life Science industry has been in the grips of a reproducibility crisis for a number of years. Abcam is leading the way in addressing this with our range of recombinant monoclonal antibodies and knockout edited cell lines for gold-standard validation. Please check that this product meets your needs before purchasing.</p> <p>If you have any questions, special requirements or concerns, please send us an inquiry and/or contact our Support team ahead of purchase. Recommended alternatives for this product can be found below, along with publications, customer reviews and Q&As</p>

製品の特性

製品の状態	Liquid
保存方法	Shipped at 4°C. Upon delivery aliquot and store at -20°C or -80°C. Avoid repeated freeze / thaw cycles.
バッファー	pH: 7.4 Constituent: PBS
精製度	Tissue culture supernatant
ポリ/モノ	モノクローナル

クローン名 2B9
アイソタイプ IgG2a

アプリケーション

The Abpromise guarantee Abpromise保証は、次のテスト済みアプリケーションにおけるab66062の使用に適用されます
アプリケーションノートには、推奨の開始希釈率がありますが、適切な希釈率につきましてはご確認ください。

アプリケーション	Abreviews	特記事項
WB		Use at an assay dependent concentration. Detects a band of approximately 36 kDa (predicted molecular weight: 39 kDa).

ターゲット情報

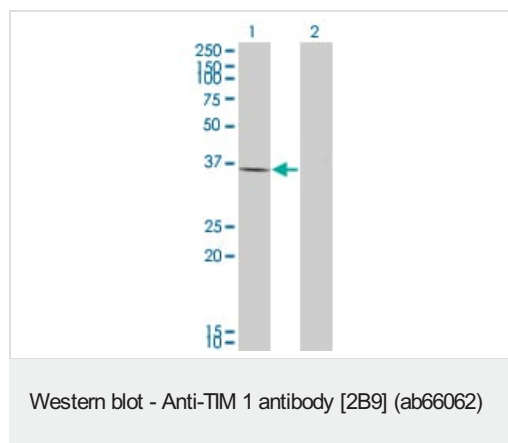
機能 May play a role in T-helper cell development and the regulation of asthma and allergic diseases. Receptor for TIMD4 (By similarity). In case of human hepatitis A virus (HHAV) infection, functions as a cell-surface receptor for the virus. May play a role in kidney injury and repair.

組織特異性 Widely expressed, with highest levels in kidney and testis. Expressed by activated CD4+ T-cells during the development of helper T-cells responses.

配列類似性 Belongs to the immunoglobulin superfamily. TIM family. Contains 1 Ig-like V-type (immunoglobulin-like) domain.

細胞内局在 Membrane.

画像



All lanes : Anti-TIM 1 antibody [2B9] (ab66062) at 1 µg/ml

Lane 1 : TIM 1 transfected 293T cell lysate

Lane 2 : Non-transfected 293T cell lysate

Lysates/proteins at 50 µg per lane.

Secondary

All lanes : Goat Anti-Mouse IgG at 1/2500 dilution

Predicted band size: 39 kDa

Observed band size: 36 kDa

This image was generated using the ascites version of the product.

Please note: All products are "FOR RESEARCH USE ONLY. NOT FOR USE IN DIAGNOSTIC PROCEDURES"

Our Abpromise to you: Quality guaranteed and expert technical support

- Replacement or refund for products not performing as stated on the datasheet
- Valid for 12 months from date of delivery
- Response to your inquiry within 24 hours

- We provide support in Chinese, English, French, German, Japanese and Spanish
- Extensive multi-media technical resources to help you
- We investigate all quality concerns to ensure our products perform to the highest standards

If the product does not perform as described on this datasheet, we will offer a refund or replacement. For full details of the Abpromise, please visit <https://www.abcam.co.jp/abpromise> or contact our technical team.

Terms and conditions

- Guarantee only valid for products bought direct from Abcam or one of our authorized distributors