

Anti-TIE1 antibody [8C9] ab27851

5 References [画像数 2](#)

製品の概要

製品名	Anti-TIE1 antibody [8C9]
製品の詳細	Mouse monoclonal [8C9] to TIE1
由来種	Mouse
アプリケーション	適用あり: WB, Flow Cyt
種交差性	交差種: Human, Recombinant fragment
免疫原	Recombinant fragment corresponding to Human TIE1. Recombinant human soluble extracellular TIE1. Database link: P35590
ポジティブ・コントロール	Flow Cyt: K562 (Human chronic myelogenous leukemia lymphoblast cell line) whole cell lysate WB: Recombinant human soluble TIE1
特記事項	<p>The Life Science industry has been in the grips of a reproducibility crisis for a number of years. Abcam is leading the way in addressing this with our range of recombinant monoclonal antibodies and knockout edited cell lines for gold-standard validation. Please check that this product meets your needs before purchasing.</p> <p>If you have any questions, special requirements or concerns, please send us an inquiry and/or contact our Support team ahead of purchase. Recommended alternatives for this product can be found below, along with publications, customer reviews and Q&As</p>

製品の特性

製品の状態	Liquid
保存方法	Shipped at 4°C. Store at +4°C short term (1-2 weeks). Upon delivery aliquot. Store at -20°C long term. Avoid freeze / thaw cycle.
バッファー	Constituent: PBS
精製度	Protein G purified
特記事項 (精製)	This antibody was purified from cell culture supernatant by chromatography.
ポリ/モノ	モノクローナル
クローン名	8C9
アイソタイプ	IgG1

アプリケーション

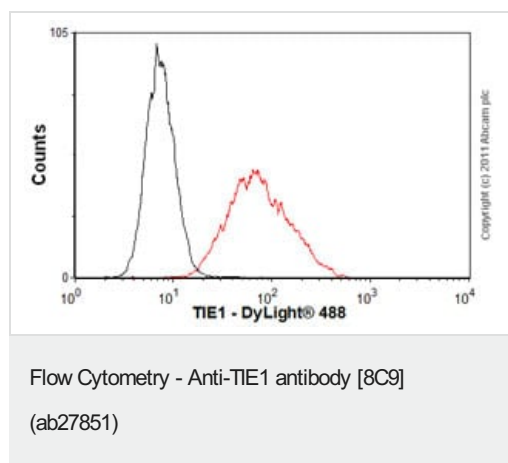
The Abpromise guarantee Abpromise保証は、 次のテスト済みアプリケーションにおけるab27851の使用に適用されます
アプリケーションノートには、推奨の開始希釈率がありますが、適切な希釈率につきましてはご確認ください。

アプリケーション	Abreviews	特記事項
WB		Use a concentration of 200000 - 500000 µg/ml. Predicted molecular weight: 125 kDa.
Flow Cyt		Use 1µg for 10 ⁶ cells. ab170190 - Mouse monoclonal IgG1, is suitable for use as an isotype control with this antibody.

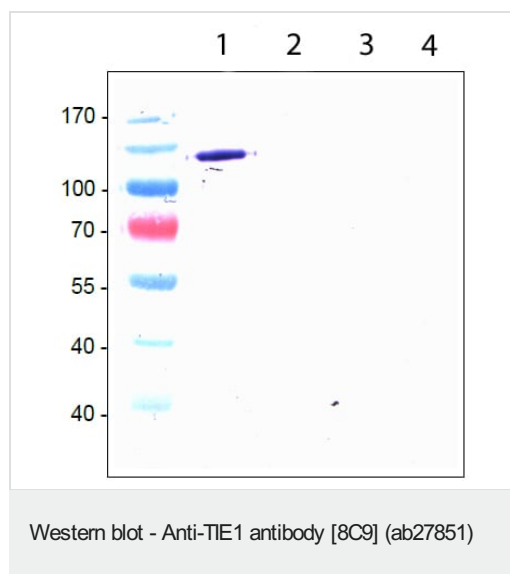
ターゲット情報

機能	Transmembrane tyrosine-protein kinase that may modulate TEK/TIE2 activity and contribute to the regulation of angiogenesis.
組織特異性	Specifically expressed in developing vascular endothelial cells.
配列類似性	Belongs to the protein kinase superfamily. Tyr protein kinase family. Tie subfamily. Contains 3 EGF-like domains. Contains 3 fibronectin type-III domains. Contains 2 Ig-like C2-type (immunoglobulin-like) domains. Contains 1 protein kinase domain.
翻訳後修飾	Phosphorylated on tyrosine residues in response to ANGPT1, most likely by TEK/TIE2.
細胞内局在	Cell membrane.

画像



Overlay histogram showing K562 cells stained with ab27851 (red line). The cells were fixed with 80% methanol (5 min) and then incubated in 1x PBS / 10% normal goat serum / 0.3M glycine to block non-specific protein-protein interactions. The cells were then incubated with the antibody (ab27851, 1µg/1x10⁶ cells) for 30 min at 22°C. The secondary antibody used was DyLight® 488 goat anti-mouse IgG (H+L) (**ab96879**) at 1/500 dilution for 30 min at 22°C. Isotype control antibody (black line) was mouse IgG1 [ICIGG1] (**ab91353**, 2µg/1x10⁶ cells) used under the same conditions. Acquisition of >5,000 events was performed. This antibody gave a positive signal in K562 cells fixed with 4% paraformaldehyde (10 min) used under the same conditions. Please note that Abcam do not have any data for use of this antibody on non-fixed cells. We welcome any customer feedback.



All lanes : Anti-TIE1 antibody [8C9] (ab27851)

Lane 1 : Recombinant human soluble TIE1

Lane 2 : Recombinant human soluble TIE2

Lane 3 : Recombinant mouse soluble TIE1

Lane 4 : Recombinant mouse soluble TIE2

Predicted band size: 125 kDa

Please note: All products are "FOR RESEARCH USE ONLY. NOT FOR USE IN DIAGNOSTIC PROCEDURES"

Our Abpromise to you: Quality guaranteed and expert technical support

- Replacement or refund for products not performing as stated on the datasheet
- Valid for 12 months from date of delivery
- Response to your inquiry within 24 hours
- We provide support in Chinese, English, French, German, Japanese and Spanish
- Extensive multi-media technical resources to help you
- We investigate all quality concerns to ensure our products perform to the highest standards

If the product does not perform as described on this datasheet, we will offer a refund or replacement. For full details of the Abpromise, please visit <https://www.abcam.co.jp/abpromise> or contact our technical team.

Terms and conditions

- Guarantee only valid for products bought direct from Abcam or one of our authorized distributors