

Anti-TICAM2 antibody [mAbcam77169] ab77169

画像数 2

製品の概要

| | |
|--------------|---|
| 製品名 | Anti-TICAM2 antibody [mAbcam77169] |
| 製品の詳細 | Mouse monoclonal [mAbcam77169] to TICAM2 |
| 由来種 | Mouse |
| アプリケーション | 適用あり: WB, Flow Cyt (Intra) |
| 種交差性 | 交差種: Human |
| 免疫原 | Synthetic peptide corresponding to Human TICAM2 aa 200 to the C-terminus conjugated to keyhole limpet haemocyanin. (Peptide available as ab57980) |
| ポジティブ・コントロール | Recombinant Human TICAM2 protein (ab123160) can be used as a positive control in WB. This antibody gave a positive signal in Human Kidney and Human Spleen Tissue Lyates |
| 特記事項 | <p>This antibody clone is manufactured by Abcam. If you require a custom buffer formulation or conjugation for your experiments, please contact orders@abcam.com.</p> <p>The Life Science industry has been in the grips of a reproducibility crisis for a number of years. Abcam is leading the way in addressing this with our range of recombinant monoclonal antibodies and knockout edited cell lines for gold-standard validation. Please check that this product meets your needs before purchasing.</p> <p>If you have any questions, special requirements or concerns, please send us an inquiry and/or contact our Support team ahead of purchase. Recommended alternatives for this product can be found below, along with publications, customer reviews and Q&As</p> |

製品の特性

| | |
|-------|---|
| 製品の状態 | Liquid |
| 保存方法 | Shipped at 4°C. Upon delivery aliquot and store at -20°C or -80°C. Avoid repeated freeze / thaw cycles. |
| バッファー | pH: 7.40 Preservative: 0.02% Sodium azide |
| 精製度 | IgG fraction |
| ポリ/モノ | モノクローナル |
| クローン名 | mAbcam77169 |

ミエローマ
アイソタイプ

Sp2/0-Ag14
IgG1

アプリケーション

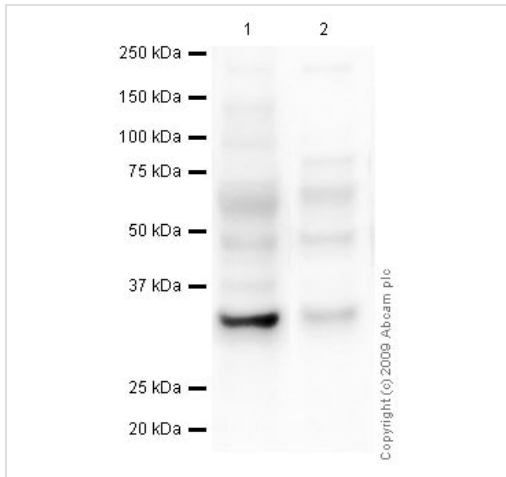
The Abpromise guarantee **Abpromise保証は、次のテスト済みアプリケーションにおけるab77169の使用に適用されず**
アプリケーションノートには、推奨の開始希釈率がありますが、適切な希釈率につきましてはご検討ください。

| アプリケーション | Abreviews | 特記事項 |
|------------------|-----------|---|
| WB | | Use a concentration of 10 µg/ml. Detects a band of approximately 32 kDa (predicted molecular weight: 27 kDa). |
| Flow Cyt (Intra) | | Use 1 µg for 10 ⁶ cells. ab170190 - Mouse monoclonal IgG1, is suitable for use as an isotype control with this antibody. |

ターゲット情報

| | |
|-------|--|
| 機能 | Functions in LPS-TLR4 signaling to regulate the MYD88-independent pathway during the innate immune response to LPS. Also involved in IL1-triggered NF-kappa-B activation, functioning upstream of IRAK1, IRAK2, TRAF6, and IKBKB. Physically bridges TLR4 and TICAM1 and functionally transmits LPS-TLR4 signal to TICAM1. |
| 組織特異性 | Expressed in spleen, prostate, testis, uterus, small intestine, colon, peripheral blood leukocytes, heart, placenta, lung, liver, skeletal muscle, and pancreas. |
| 配列類似性 | Contains 1 TIR domain. |
| ドメイン | The TIR domain mediates the interaction with TRAF6. |
| 翻訳後修飾 | Phosphorylated by PKCE in response to LPS. Phosphorylation is essential for its function. It is depleted from the membrane upon phosphorylation. Myristoylated. Required for membrane association which is critical for its ability to initiate efficient signaling. |
| 細胞内局在 | Cytoplasm. Golgi apparatus. Cell membrane. Localized to the plasma membrane as a result of myristoylation. Phosphorylation on Ser-16 leads to its depletion from the membrane. |

画像



Western blot - Anti-TICAM2 antibody
[mAbcam77169] (ab77169)

All lanes : Anti-TICAM2 antibody [mAbcam77169] (ab77169) at 10 μ g/ml

Lane 1 : Human kidney tissue lysate - total protein (**ab30203**)

Lane 2 : Human spleen tissue lysate - total protein (**ab29699**)

Lysates/proteins at 20 μ g per lane.

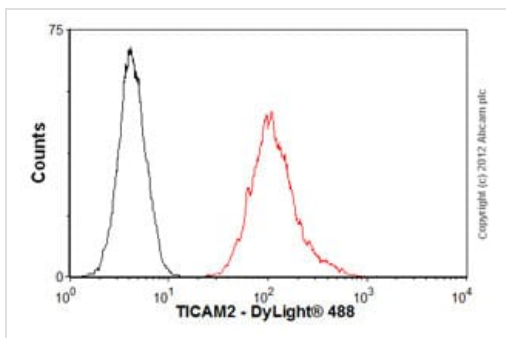
Secondary

All lanes : Goat polyclonal to Mouse IgG - H&L - Pre-Adsorbed (HRP) at 1/3000 dilution

Performed under reducing conditions.

Predicted band size: 27 kDa

Observed band size: 32 kDa



Flow Cytometry (Intracellular) - Anti-TICAM2
antibody [mAbcam77169] (ab77169)

Overlay histogram showing PC3 cells stained with ab77169 (red line). The cells were fixed with 80% methanol (5 min) and then permeabilized with 0.1% PBS-Tween for 20 min. The cells were then incubated in 1x PBS / 10% normal goat serum / 0.3M glycine to block non-specific protein-protein interactions. The cells were then incubated with the antibody (ab77169, 1 μ g/1x10⁶ cells) for 30 min at 22°C. The secondary antibody used was DyLight® 488 goat anti-mouse IgG (H+L) (**ab96879**) at 1/500 dilution for 30 min at 22°C. Isotype control antibody (black line) was mouse IgG1 [ICIGG1] (**ab91353**, 2 μ g/1x10⁶ cells) used under the same conditions. Acquisition of >5,000 events was performed.

Please note: All products are "FOR RESEARCH USE ONLY. NOT FOR USE IN DIAGNOSTIC PROCEDURES"

Our Abpromise to you: Quality guaranteed and expert technical support

- Replacement or refund for products not performing as stated on the datasheet
- Valid for 12 months from date of delivery
- Response to your inquiry within 24 hours

- We provide support in Chinese, English, French, German, Japanese and Spanish
- Extensive multi-media technical resources to help you
- We investigate all quality concerns to ensure our products perform to the highest standards

If the product does not perform as described on this datasheet, we will offer a refund or replacement. For full details of the Abpromise, please visit <https://www.abcam.co.jp/abpromise> or contact our technical team.

Terms and conditions

- Guarantee only valid for products bought direct from Abcam or one of our authorized distributors