


Anti-THOC5 antibody ab86074

画像数 3

製品の概要

製品名	Anti-THOC5 antibody
製品の詳細	Rabbit polyclonal to THOC5
由来種	Rabbit
アプリケーション	適用あり: WB, IP, IHC-P
種交差性	交差種: Mouse, Human 交差が予測される動物種: Rat, Rabbit, Horse, Guinea pig, Cow, Dog, Chimpanzee, Ferret, Rhesus monkey, Gorilla, Chinese hamster, Orangutan, Elephant 
免疫原	A region between residue 25 and 75 of human THOC5 (NP_003669.4)
ポジティブ・コントロール	293T cell lysate, NIH3T3 cell lysate and HeLa whole cell lysate (ab150035)
特記事項	<p>The Life Science industry has been in the grips of a reproducibility crisis for a number of years. Abcam is leading the way in addressing this with our range of recombinant monoclonal antibodies and knockout edited cell lines for gold-standard validation. Please check that this product meets your needs before purchasing.</p> <p>If you have any questions, special requirements or concerns, please send us an inquiry and/or contact our Support team ahead of purchase. Recommended alternatives for this product can be found below, along with publications, customer reviews and Q&As</p>

製品の特性

製品の状態	Liquid
保存方法	Shipped at 4°C. Upon delivery aliquot and store at -20°C. Avoid freeze / thaw cycles.
バッファー	<p>pH: 6.8</p> <p>Preservative: 0.09% Sodium azide</p> <p>Constituents: 0.1% BSA, Tris buffered saline</p>
精製度	Immunogen affinity purified
ポリ/モノ	ポリクローナル
アイソタイプ	IgG

アプリケーション

The Abpromise guarantee

Abpromise保証は、次のテスト済みアプリケーションにおけるab86074の使用に適用されます

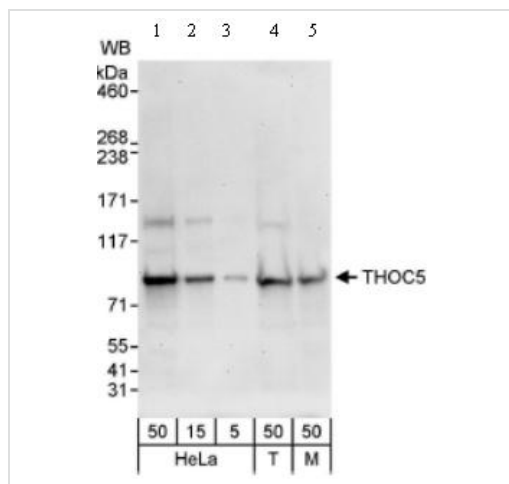
アプリケーションノートには、推奨の開始希釈率がありますが、適切な希釈率につきましてはご確認ください。

アプリケーション	Abreviews	特記事項
WB		1/2000 - 1/10000. Predicted molecular weight: 79 kDa.
IP		Use at 2-5 µg/mg of lysate.
IHC-P		1/100 - 1/500. Perform heat mediated antigen retrieval with citrate buffer pH 6 before commencing with IHC staining protocol.

ターゲット情報

機能	Component the THO subcomplex of the TREX complex. The TREX complex specifically associates with spliced mRNA and not with unspliced pre-mRNA. It is recruited to spliced mRNAs by a transcription-independent mechanism. Binds to mRNA upstream of the exon-junction complex (EJC) and is recruited in a splicing- and cap-dependent manner to a region near the 5' end of the mRNA where it functions in mRNA export. The recruitment occurs via an interaction between ALYREF/THOC4 and the cap-binding protein NCBP1. The TREX complex is essential for the export of Kaposi's sarcoma-associated herpesvirus (KSHV) intronless mRNAs and infectious virus production. The recruitment of the TREX complex to the intronless viral mRNA occurs via an interaction between KSHV ORF57 protein and ALYREF/THOC4. DDX39B functions as a bridge between ALYREF/THOC4 and the THO complex. THOC5 in conjunction with ALYREF/THOC4 functions in NXF1-NXT1 mediated nuclear export of HSP70 mRNA. Regulates the expression of myeloid transcription factors CEBPA, CEBPB and GAB2 by enhancing the levels of phosphatidylinositol 3,4,5-trisphosphate. May be involved in the differentiation of granulocytes and adipocytes. Essential for hematopoietic primitive cell survival and plays an integral role in monocytic development.
組織特異性	Ubiquitously expressed.
配列類似性	Belongs to the THOC5 family.
翻訳後修飾	Phosphorylated on tyrosine upon binding to activated CSF1R; which causes a dissociation of the two proteins. Phosphorylation on Ser-5 and/or Ser-6 is required for nuclear export. Phosphorylated on Thr-328 in insulin-stimulated adipocytes (By similarity). Phosphorylated upon DNA damage, probably by ATM or ATR.
細胞内局在	Nucleus. Cytoplasm. Shuttles between nucleus and cytoplasm.

画像



Western blot - Anti-THOC5 antibody (ab86074)

All lanes : Anti-THOC5 antibody (ab86074) at 0.04 µg/ml

Lane 1 : HeLa whole cell lysate at 50 µg

Lane 2 : HeLa whole cell lysate at 15 µg

Lane 3 : HeLa whole cell lysate at 5 µg

Lane 4 : 293T cell lysate at 50 µg

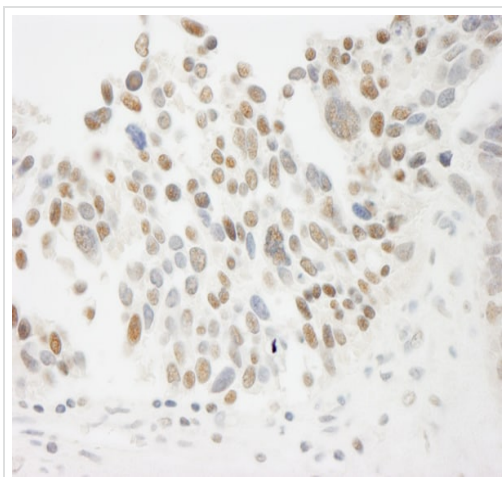
Lane 5 : mouse NIH3T3 cell lysate at 50 µg

Developed using the ECL technique.

Predicted band size: 79 kDa

Observed band size: 79 kDa

Exposure time: 30 seconds



Immunohistochemistry (Formalin/PFA-fixed paraffin-embedded sections) - Anti-THOC5 antibody (ab86074)

Immunohistochemistry (Formalin/PFA-fixed paraffin-embedded sections) analysis of human ovarian carcinoma tissue labelling THOC5 with ab86074 at 1/200 (1µg/ml). Detection: DAB.



Immunoprecipitation - Anti-THOC5 antibody
(ab86074)

Immunoprecipitation/ Western Blot of ab86074: Whole cell lysate from Hela cells at 1 mg for IP, 20% of IP loaded and ab86074 used for IP at 3 µg/mg lysate and 0.4 µg/ml for WB. Chemiluminescence with an exposure time of 10 seconds.

Please note: All products are "FOR RESEARCH USE ONLY. NOT FOR USE IN DIAGNOSTIC PROCEDURES"

Our Abpromise to you: Quality guaranteed and expert technical support

- Replacement or refund for products not performing as stated on the datasheet
- Valid for 12 months from date of delivery
- Response to your inquiry within 24 hours
- We provide support in Chinese, English, French, German, Japanese and Spanish
- Extensive multi-media technical resources to help you
- We investigate all quality concerns to ensure our products perform to the highest standards

If the product does not perform as described on this datasheet, we will offer a refund or replacement. For full details of the Abpromise, please visit <https://www.abcam.co.jp/abpromise> or contact our technical team.

Terms and conditions

- Guarantee only valid for products bought direct from Abcam or one of our authorized distributors