


Anti-Thioredoxin / TRX antibody ab26320

★★★★★ [5 Abreviews](#) [39 References](#) [画像数 5](#)

製品の概要

製品名	Anti-Thioredoxin / TRX antibody
製品の詳細	Rabbit polyclonal to Thioredoxin / TRX
由来種	Rabbit
アプリケーション	適用あり: IP, WB, ICC/IF
種交差性	交差種: Human, Chinese hamster 交差が予測される動物種: Mouse, Rat, Sheep, Cow, Cat, Pig 
免疫原	Synthetic peptide conjugated to KLH derived from within residues 50 to the C-terminus of Human Thioredoxin/ TRX. Immunogen の所有権に関して (Peptide available as ab27815 .)
特記事項	<p>The Life Science industry has been in the grips of a reproducibility crisis for a number of years. Abcam is leading the way in addressing this with our range of recombinant monoclonal antibodies and knockout edited cell lines for gold-standard validation. Please check that this product meets your needs before purchasing.</p> <p>If you have any questions, special requirements or concerns, please send us an inquiry and/or contact our Support team ahead of purchase. Recommended alternatives for this product can be found below, along with publications, customer reviews and Q&As</p>

製品の特性

製品の状態	Liquid
保存方法	Shipped at 4°C. Store at +4°C short term (1-2 weeks). Upon delivery aliquot. Store at -20°C or -80°C. Avoid freeze / thaw cycle.
バッファー	pH: 7.40 Preservative: 0.02% Sodium azide Constituent: PBS Batches of this product that have a concentration < 1mg/ml may have BSA added as a stabilising agent. If you would like information about the formulation of a specific lot, please contact our scientific support team who will be happy to help.
精製度	Immunogen affinity purified
ポリ/モノ	ポリクローナル
アイソタイプ	IgG

アプリケーション

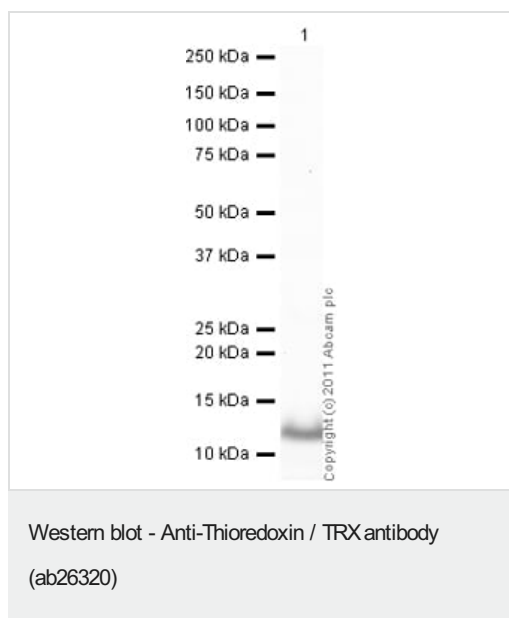
The Abpromise guarantee Abpromise保証は、次のテスト済みアプリケーションにおけるab26320の使用に適用されます
アプリケーションノートには、推奨の開始希釈率がありますが、適切な希釈率につきましてはご検討ください。

アプリケーション	Abreviews	特記事項
IP		Use a concentration of 5 µg/ml.
WB	★★★★★ (2)	Use a concentration of 1 µg/ml. Detects a band of approximately 12 kDa (predicted molecular weight: 12 kDa).
ICC/IF	★★★★★ (2)	Use at an assay dependent concentration.

ターゲット情報

機能	Participates in various redox reactions through the reversible oxidation of its active center dithiol to a disulfide and catalyzes dithiol-disulfide exchange reactions. Plays a role in the reversible S-nitrosylation of cysteine residues in target proteins, and thereby contributes to the response to intracellular nitric oxide. Nitrosylates the active site Cys of CASP3 in response to nitric oxide (NO), and thereby inhibits caspase-3 activity. Induces the FOS/JUN AP-1 DNA-binding activity in ionizing radiation (IR) cells through its oxidation/reduction status and stimulates AP-1 transcriptional activity. ADF augments the expression of the interleukin-2 receptor TAC (IL2R/P55).
配列類似性	Belongs to the thioredoxin family. Contains 1 thioredoxin domain.
翻訳後修飾	In the fully reduced protein, both Cys-69 and Cys-73 are nitrosylated in response to nitric oxide (NO). When two disulfide bonds are present in the protein, only Cys-73 is nitrosylated. Cys-73 can serve as donor for nitrosylation of target proteins. In case of infection, ubiquitinated by S.typhimurium protein slrP, leading to its degradation.
細胞内局在	Nucleus. Cytoplasm. Secreted. Secreted by a leaderless secretory pathway. Predominantly in the cytoplasm in non irradiated cells. Radiation induces translocation of TRX from the cytoplasm to the nucleus.

画像



Anti-Thioredoxin / TRX antibody (ab26320) at 1 µg/ml +
Recombinant human Thioredoxin / TRX protein (Active) ([ab51064](#))
at 0.01 µg

Secondary

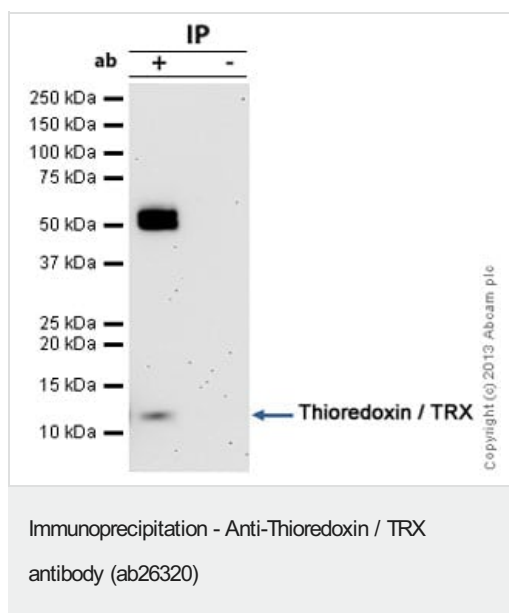
Goat Anti-Rabbit IgG H&L (HRP) preadsorbed ([ab97080](#)) at
1/5000 dilution

Developed using the ECL technique.

Performed under reducing conditions.

Predicted band size: 12 kDa

Exposure time: 30 seconds



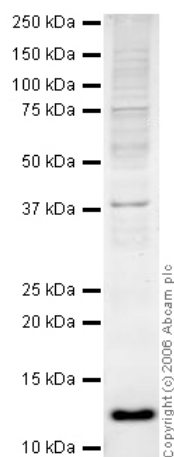
Thioredoxin / TRX was immunoprecipitated using 0.5mg Hela whole cell extract, 5µg of Rabbit polyclonal to Thioredoxin / TRX and 50µl of protein G magnetic beads (+). No antibody was added to the control (-).

The antibody was incubated under agitation with Protein G beads for 10min, Hela whole cell extract lysate diluted in RIPA buffer was added to each sample and incubated for a further 10min under agitation.

Proteins were eluted by addition of 40µl SDS loading buffer and incubated for 10min at 70°C; 10µl of each sample was separated on a SDS PAGE gel, transferred to a nitrocellulose membrane, blocked with 5% BSA and probed with ab26320.

Secondary: Mouse monoclonal [SB62a] Secondary Antibody to Rabbit IgG light chain (HRP) ([ab99697](#)).

Band: 12kDa; Thioredoxin / TRX



Western blot - Anti-Thioredoxin / TRX antibody (ab26320)

Anti-Thioredoxin / TRX antibody (ab26320) at 1 µg/ml + HeLa whole cell lysate at 20 µg

Secondary

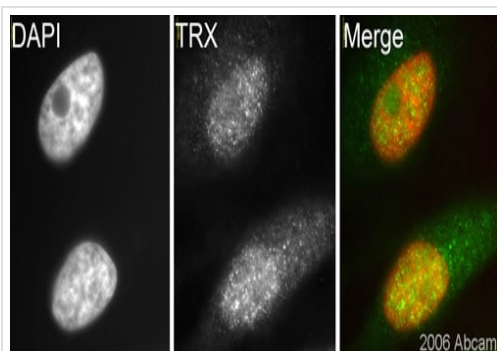
Goat polyclonal to Rabbit IgG (Alexa Fluor® 680) at 1/10000 dilution

Performed under reducing conditions.

Predicted band size: 12 kDa

Observed band size: 12 kDa

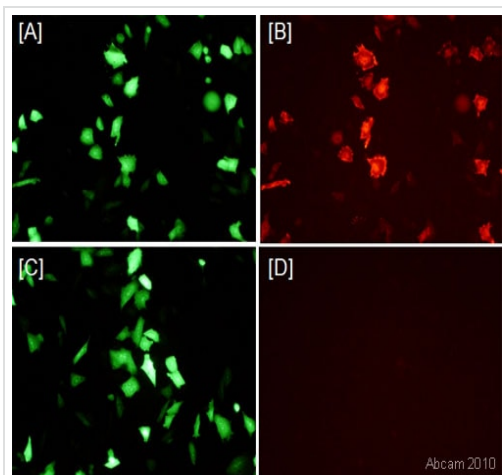
ab26320 detects a band of 12 kDa in HeLa, Jurkat and A431 whole cell lysates. The data for the Jurkat and A431 lysates is not shown.



Immunocytochemistry/ Immunofluorescence - Anti-Thioredoxin / TRX antibody (ab26320)

This image is courtesy of an Abreview submitted by Dr Kirk McManus

ab26320, at 1/200 dilution, staining human TRX in asynchronous HeLa cells by ICC/IF.



Immunocytochemistry/ Immunofluorescence - Anti-Thioredoxin / TRX antibody (ab26320)

This image is courtesy of an abreview submitted by Dr David Tonge, Wolfson CARD, Kings College London

Immunofluorescent detection of Thioredoxin /TRX using antibody ab26320. Chinese Hamster Cell (Ovary cells) were fixed in formaldehyde and permeabilized in 0.1% Triton X in PBS/3% BSA. Primary antibody was incubated at 1/1000 for 1h @ 4°C in PBS containing 3% BSA. Secondary antibody: anti-rabbit conjugated to Alexa Fluor® 568 used @ 1/300. CHO cells co-transfected with plasmids encoding GFP and a mutated form of human thioredoxin which does not enter the nucleus, and labelled using ab26320 (1/1000) and Alexa 568 (1/300). Panel [A] demonstrates GFP immunoreactivity. [B] thioredoxin immunoreactivity; many of the same cells are immunoreactive for both GFP and thioredoxin. Panel [D] thioredoxin primary antibody was omitted, hence there is no immunoreactivity.

Please note: All products are "FOR RESEARCH USE ONLY. NOT FOR USE IN DIAGNOSTIC PROCEDURES"

Our Abpromise to you: Quality guaranteed and expert technical support

- Replacement or refund for products not performing as stated on the datasheet
- Valid for 12 months from date of delivery
- Response to your inquiry within 24 hours
- We provide support in Chinese, English, French, German, Japanese and Spanish
- Extensive multi-media technical resources to help you
- We investigate all quality concerns to ensure our products perform to the highest standards

If the product does not perform as described on this datasheet, we will offer a refund or replacement. For full details of the Abpromise, please visit <https://www.abcam.co.jp/abpromise> or contact our technical team.

Terms and conditions

- Guarantee only valid for products bought direct from Abcam or one of our authorized distributors