

Anti-THEM4 antibody ab106435

2 References [画像数 3](#)

製品の概要

製品名	Anti-THEM4 antibody
製品の詳細	Rabbit polyclonal to THEM4
由来種	Rabbit
アプリケーション	適用あり: ICC/IF, IHC-P, WB
種交差性	交差種: Mouse, Rat, Human
免疫原	18 amino acid synthetic peptide designed near the center of Human THEM4 (NP_444283).
ポジティブ・コントロール	Human liver tissue / tissue lysate.
特記事項	<p>The Life Science industry has been in the grips of a reproducibility crisis for a number of years. Abcam is leading the way in addressing this with our range of recombinant monoclonal antibodies and knockout edited cell lines for gold-standard validation. Please check that this product meets your needs before purchasing.</p> <p>If you have any questions, special requirements or concerns, please send us an inquiry and/or contact our Support team ahead of purchase. Recommended alternatives for this product can be found below, along with publications, customer reviews and Q&As</p>

製品の特性

製品の状態	Liquid
保存方法	Shipped at 4°C. Store at 4°C (stable for up to 12 months).
バッファー	pH: 7.2 Preservative: 0.02% Sodium azide Constituent: PBS
精製度	Immunogen affinity purified
ポリ/モノ	ポリクローナル
アイソタイプ	IgG

アプリケーション

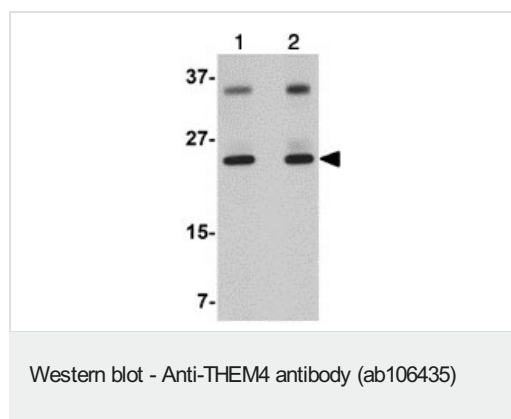
The Abpromise guarantee **Abpromise保証は、** 次のテスト済みアプリケーションにおけるab106435の使用に適用されます
アプリケーションノートには、推奨の開始希釈率がありますが、適切な希釈率につきましてはご検討ください。

アプリケーション	Abreviews	特記事項
ICC/IF		Use a concentration of 20 µg/ml.
IHC-P		Use a concentration of 2.5 µg/ml.
WB		Use a concentration of 1 - 2 µg/ml. Predicted molecular weight: 27 kDa.

ターゲット情報

機能	According to PubMed:11598301, inhibits AKT1 phosphorylation and activity. According to PubMed:17615157, enhances AKT1 activity by favoring its phosphorylation and translocation to plasma membrane.
組織特異性	Expressed predominantly in skeletal muscle, testis, uterus, brain and kidney. Down-regulated in glioblastoma or glioma compared to non-neoplastic brain due to promoter hypermethylation.
翻訳後修飾	Phosphorylated.
細胞内局在	Cell membrane. Cell projection > ruffle membrane. Cytoplasm.

画像



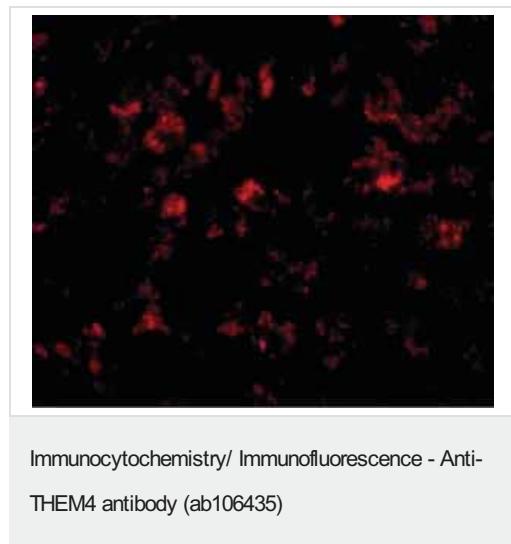
Lane 1 : Anti-THEM4 antibody (ab106435) at 1 µg/ml

Lane 2 : Anti-THEM4 antibody (ab106435) at 2 µg/ml

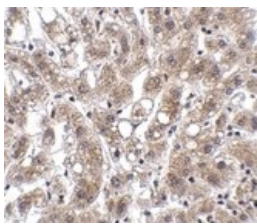
All lanes : Human liver tissue lysate

Lysates/proteins at 15 µg per lane.

Predicted band size: 27 kDa



Immunofluorescence of THEM4 in Human liver tissue with ab106435 at 20 µg/mL.



ab106435 at 2.5µg staining THEM4 in paraffin embedded Human liver tissue by immunohistochemistry.

Immunohistochemistry (Formalin/PFA-fixed paraffin-embedded sections) - Anti-THEM4 antibody (ab106435)

Please note: All products are "FOR RESEARCH USE ONLY. NOT FOR USE IN DIAGNOSTIC PROCEDURES"

Our Abpromise to you: Quality guaranteed and expert technical support

- Replacement or refund for products not performing as stated on the datasheet
- Valid for 12 months from date of delivery
- Response to your inquiry within 24 hours
- We provide support in Chinese, English, French, German, Japanese and Spanish
- Extensive multi-media technical resources to help you
- We investigate all quality concerns to ensure our products perform to the highest standards

If the product does not perform as described on this datasheet, we will offer a refund or replacement. For full details of the Abpromise, please visit <https://www.abcam.co.jp/abpromise> or contact our technical team.

Terms and conditions

- Guarantee only valid for products bought direct from Abcam or one of our authorized distributors