

### Anti-TGN46 antibody - Golgi Marker ab16059

★★★★★ [7 Abreviews](#) [34 References](#) [画像数 4](#)

#### 製品の概要

製品名	Anti-TGN46 antibody - Golgi Marker
製品の詳細	Rabbit polyclonal to TGN46 - Golgi Marker
由来種	Rabbit
特異性	This antibody does not cross react with TGN46 - the human homologue of TGN46. A Rabbit polyclonal to human TGN46 is available ( <a href="#">ab16052</a> ).
アプリケーション	<b>適用あり:</b> IHC-P, ICC, ICC/IF <b>適用なし:</b> WB
種交差性	<b>交差種:</b> Mouse, Rat, Chinese hamster <b>非交差種:</b> Human
免疫原	Synthetic peptide. This information is proprietary to Abcam and/or its suppliers.
ポジティブ・コントロール	ICC/IF: MEF1 cells. IHC-P: mouse e14 whole fetus; Rat E14 Embryo.
特記事項	<p>The Life Science industry has been in the grips of a reproducibility crisis for a number of years. Abcam is leading the way in addressing this with our range of recombinant monoclonal antibodies and knockout edited cell lines for gold-standard validation. Please check that this product meets your needs before purchasing.</p> <p>If you have any questions, special requirements or concerns, please send us an inquiry and/or contact our Support team ahead of purchase. Recommended alternatives for this product can be found below, along with publications, customer reviews and Q&amp;As</p>

#### 製品の特性

製品の状態	Liquid
保存方法	Shipped at 4°C. Store at +4°C short term (1-2 weeks). Upon delivery aliquot. Store at -20°C or -80°C. Avoid freeze / thaw cycle.
バッファー	pH: 7.40 Preservative: 0.02% Sodium azide Constituent: PBS
	Batches of this product that have a concentration < 1mg/ml may have BSA added as a stabilising agent. If you would like information about the formulation of a specific lot, please contact our scientific support team who will be happy to help.

精製度	Immunogen affinity purified
ポリ/モノ	ポリクローナル
アイソタイプ	IgG

## アプリケーション

**The Abpromise guarantee** **Abpromise保証は、次のテスト済みアプリケーションにおけるab16059の使用に適用されます**  
アプリケーションノートには、推奨の開始希釈率がありますが、適切な希釈率につきましてはご確認ください。

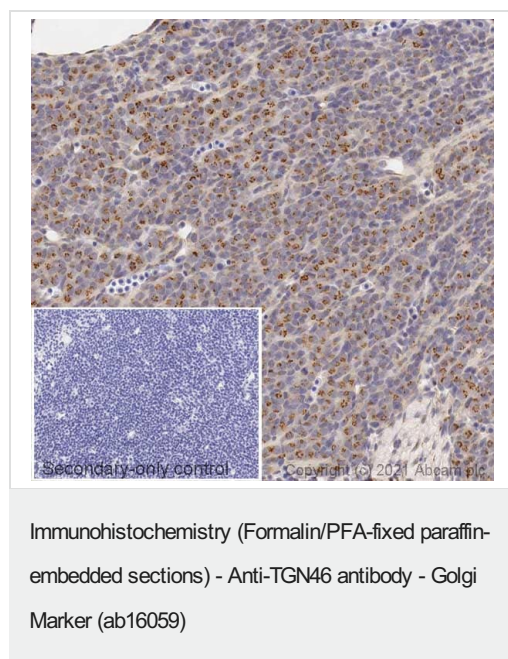
アプリケーション	Abreviews	特記事項
IHC-P		Use a concentration of 5 µg/ml. Perform heat mediated antigen retrieval before commencing with IHC staining protocol.
ICC	★★★★★ (1)	Use a concentration of 1 µg/ml.
ICC/IF	★★★★★ (3)	Use at an assay dependent concentration.

**追加情報** Is unsuitable for WB.

## ターゲット情報

<b>機能</b>	May be involved in regulating membrane traffic to and from trans-Golgi network.
<b>組織特異性</b>	Isoform TGN46 is widely expressed. Isoform TGN51 is more abundant in fetal lung and kidney. Isoform TGN48 is barely expressed in embryonic kidney and promyelocytic cells.
<b>細胞内局在</b>	Cell membrane. Golgi apparatus > trans-Golgi network membrane. Primarily in trans-Golgi network. Cycles between the trans-Golgi network and the cell surface returning via endosomes.

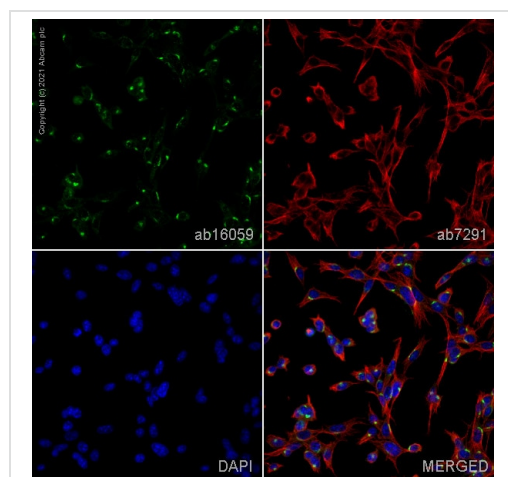
## 画像



IHC image of TGN46 staining in a section of formalin-fixed paraffin-embedded normal mouse E14 embryo performed on a Leica BOND™ system using the standard protocol F. The section was pre-treated using heat mediated antigen retrieval with sodium citrate buffer (pH6, epitope retrieval solution 1) for 20mins. The section was then incubated with ab16059, 1µg/ml, for 15 mins at room temperature and detected using an HRP conjugated compact polymer system. DAB was used as the chromogen. The section was then counterstained with haematoxylin and mounted with DPX. The inset secondary-only control image is taken from an identical assay without primary antibody.

For other IHC staining systems (automated and non-automated) customers should optimize variable parameters such as antigen retrieval conditions, primary antibody concentration and antibody

incubation times.

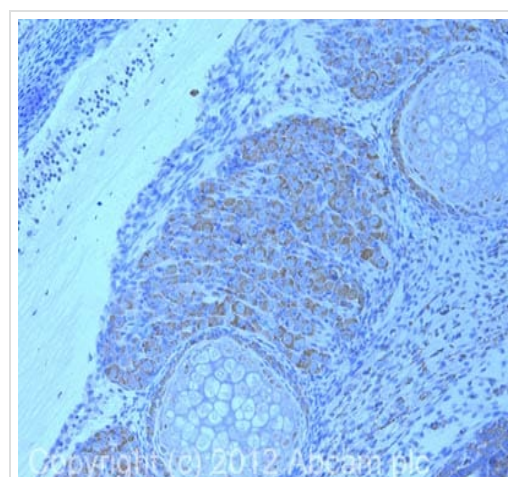


Immunocytochemistry - Anti-TGN46 antibody - Golgi Marker (ab16059)

ab16059 staining TGN46 in MEF1 cells. The cells were fixed with 100% methanol (5 min), permeabilized with 0.1% PBS-Tween for 5 minutes and then blocked with 1% BSA/10% normal goat serum/0.3M glycine in 0.1% PBS-Tween for 1h. The cells were then incubated overnight at 4°C with ab16059 at 1µg/ml and **ab7291**, Mouse monoclonal [DM1A] to alpha Tubulin - Loading Control. Cells were then incubated with **ab150081**, Goat polyclonal Secondary Antibody to Rabbit IgG - H&L (Alexa Fluor® 488), pre-adsorbed at 1/1000 dilution (shown in green) and **ab150120**, Goat polyclonal Secondary Antibody to Mouse IgG - H&L (Alexa Fluor® 594), pre-adsorbed at 1/1000 dilution (shown in pseudocolour red). Nuclear DNA was labelled with DAPI (shown in blue).

Also suitable in cells fixed with 4% paraformaldehyde (10 min).

Image was acquired with a high-content analyser (Operetta CLS, Perkin Elmer) and a maximum intensity projection of confocal sections is shown.



Immunohistochemistry (Formalin/PFA-fixed paraffin-embedded sections) - Anti-TGN46 antibody - Golgi Marker (ab16059)

IHC image of ab16059 staining in mouse e14 whole foetus formalin fixed paraffin embedded tissue section, performed on a Leica Bond™ system using the standard protocol B. The section was pre-treated using heat mediated antigen retrieval with sodium citrate buffer (pH6, epitope retrieval solution 1) for 20 mins. The section was then incubated with ab16059, 5µg/ml, for 15 mins at room temperature. A goat anti-rabbit biotinylated secondary antibody was used to detect the primary, and visualized using an HRP conjugated ABC system. DAB was used as the chromogen. The section was then counterstained with haematoxylin and mounted with DPX.

For other IHC staining systems (automated and non-automated) customers should optimize variable parameters such as antigen retrieval conditions, primary antibody concentration and antibody incubation times.



Immunocytochemistry - Anti-TGN46 antibody - Golgi Marker (ab16059)

Paraformaldehyde-fixed, Triton-X 100-permeabilised mouse keratinocytes stained for TGN46 at 1/200 dilution in ICC.

**Please note:** All products are "FOR RESEARCH USE ONLY. NOT FOR USE IN DIAGNOSTIC PROCEDURES"

### **Our Abpromise to you: Quality guaranteed and expert technical support**

---

- Replacement or refund for products not performing as stated on the datasheet
- Valid for 12 months from date of delivery
- Response to your inquiry within 24 hours
  
- We provide support in Chinese, English, French, German, Japanese and Spanish
- Extensive multi-media technical resources to help you
- We investigate all quality concerns to ensure our products perform to the highest standards

If the product does not perform as described on this datasheet, we will offer a refund or replacement. For full details of the Abpromise, please visit <https://www.abcam.co.jp/abpromise> or contact our technical team.

### **Terms and conditions**

---

- Guarantee only valid for products bought direct from Abcam or one of our authorized distributors