


### Anti-TFPI2 antibody ab86933

2 References [画像数 2](#)

医薬用外劇物

#### 製品の概要

製品名	Anti-TFPI2 antibody
製品の詳細	Rabbit polyclonal to TFPI2
由来種	Rabbit
アプリケーション	<b>適用あり:</b> WB, IHC-P
種交差性	<b>交差種:</b> Rat, Human <b>交差が予測される動物種:</b> Mouse 
免疫原	A synthetic peptide corresponding to internal sequence of Human TFPI2
ポジティブ・コントロール	Rat brain and pancreas tissue lysates; MM453, MM231, HeLa, HT1080 and Jurkat whole cell lysates; Human mammary cancer tissue.
特記事項	<p>The Life Science industry has been in the grips of a reproducibility crisis for a number of years. Abcam is leading the way in addressing this with our range of recombinant monoclonal antibodies and knockout edited cell lines for gold-standard validation. Please check that this product meets your needs before purchasing.</p> <p>If you have any questions, special requirements or concerns, please send us an inquiry and/or contact our Support team ahead of purchase. Recommended alternatives for this product can be found below, along with publications, customer reviews and Q&amp;As</p>

#### 製品の特性

製品の状態	Liquid
保存方法	Shipped at 4°C. Upon delivery aliquot and store at -20°C. Avoid repeated freeze / thaw cycles.
バッファー	Preservatives: 0.025% Sodium azide, 0.025% Thimerosal (merthiolate) Constituents: 2.5% BSA, 0.45% Sodium chloride, 0.1% Dibasic monohydrogen sodium phosphate
精製度	Immunogen affinity purified
ポリ/モノ	ポリクローナル
アイソタイプ	IgG

## アプリケーション

### The Abpromise guarantee

**Abpromise保証は、**次のテスト済みアプリケーションにおけるab86933の使用に適用されます

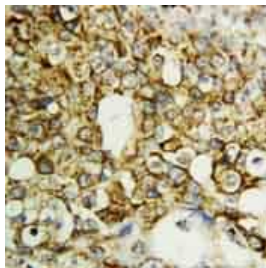
アプリケーションノートには、推奨の開始希釈率がありますが、適切な希釈率につきましてはご確認ください。

アプリケーション	Abreviews	特記事項
WB		Use a concentration of 1 µg/ml. Predicted molecular weight: 27 kDa.
IHC-P		Use a concentration of 2 µg/ml. Perform heat mediated antigen retrieval before commencing with IHC staining protocol.

## ターゲット情報

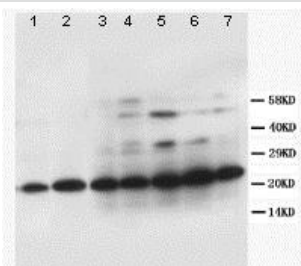
機能	May play a role in the regulation of plasmin-mediated matrix remodeling. Inhibits trypsin, plasmin, factor VIIa/tissue factor and weakly factor Xa. Has no effect on thrombin.
組織特異性	Umbilical vein endothelial cells, liver, placenta, heart, pancreas, and maternal serum at advanced pregnancy.
配列類似性	Contains 3 BPTI/Kunitz inhibitor domains.
ドメイン	This inhibitor contains three inhibitory domains.
細胞内局在	Secreted.

## 画像



Immunohistochemistry (Formalin/PFA-fixed paraffin-embedded sections) - Anti-TFPI2 antibody (ab86933)

ab86933, at 2µg/ml, staining paraffin-embedded Human Mammary cancer tissue by Immunohistochemistry.



Western blot - Anti-TFPI2 antibody (ab86933)

**All lanes :** Anti-TFPI2 antibody (ab86933) at 1 µg/ml

**Lane 1 :** Rat brain tissue lysate

**Lane 2 :** Rat pancreas tissue lysate

**Lane 3 :** MM453 whole cell lysate

**Lane 4 :** MM231 whole cell lysate

**Lane 5 :** HeLa whole cell lysate

**Lane 6 :** HT1080 whole cell lysate

**Lane 7 :** Jurkat whole cell lysate

**Predicted band size:** 27 kDa

**Observed band size:** 25 kDa

**Please note:** All products are "FOR RESEARCH USE ONLY. NOT FOR USE IN DIAGNOSTIC PROCEDURES"

#### **Our Abpromise to you: Quality guaranteed and expert technical support**

---

- Replacement or refund for products not performing as stated on the datasheet
- Valid for 12 months from date of delivery
- Response to your inquiry within 24 hours
- We provide support in Chinese, English, French, German, Japanese and Spanish
- Extensive multi-media technical resources to help you
- We investigate all quality concerns to ensure our products perform to the highest standards

If the product does not perform as described on this datasheet, we will offer a refund or replacement. For full details of the Abpromise, please visit <https://www.abcam.co.jp/abpromise> or contact our technical team.

#### **Terms and conditions**

---

- Guarantee only valid for products bought direct from Abcam or one of our authorized distributors