

Anti-TEM4 antibody ab67278

[2 References](#) [画像数 2](#)

製品の概要

| | |
|--------------|---|
| 製品名 | Anti-TEM4 antibody |
| 製品の詳細 | Rabbit polyclonal to TEM4 |
| 由来種 | Rabbit |
| アプリケーション | 適用あり: ICC/IF, WB, IHC-P |
| 種交差性 | 交差種: Human |
| 免疫原 | Synthetic peptide. This information is proprietary to Abcam and/or its suppliers. |
| ポジティブ・コントロール | Jurkat cell lysate. Human spleen tissue. |
| 特記事項 | <p>The Life Science industry has been in the grips of a reproducibility crisis for a number of years. Abcam is leading the way in addressing this with our range of recombinant monoclonal antibodies and knockout edited cell lines for gold-standard validation. Please check that this product meets your needs before purchasing.</p> <p>If you have any questions, special requirements or concerns, please send us an inquiry and/or contact our Support team ahead of purchase. Recommended alternatives for this product can be found below, along with publications, customer reviews and Q&As</p> |

製品の特性

| | |
|--------|---|
| 製品の状態 | Liquid |
| 保存方法 | Shipped at 4°C. Store at +4°C. |
| バッファー | pH: 7.2 Preservative: 0.02% Sodium azide Constituent: PBS |
| 精製度 | Immunogen affinity purified |
| ポリ/モノ | ポリクローナル |
| アイソタイプ | IgG |

アプリケーション

The Abpromise guarantee **Abpromise保証は、次のテスト済みアプリケーションにおけるab67278の使用に適用されます**
アプリケーションノートには、推奨の開始希釈率がありますが、適切な希釈率につきましてはご検討ください。

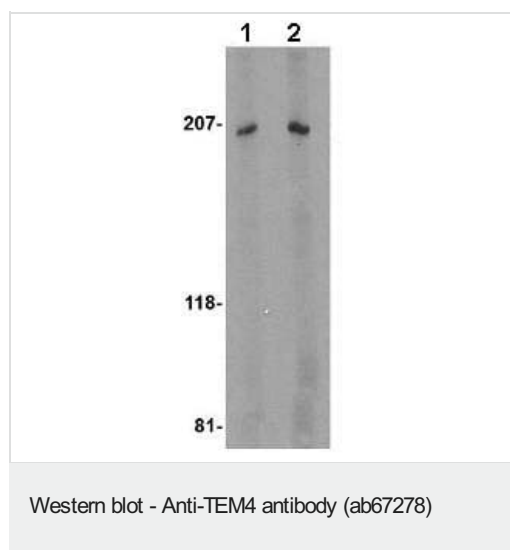
| アプリケーション | Abreviews | 特記事項 |
|----------|-----------|--|
| ICC/IF | | Use at an assay dependent concentration. |
| WB | | Use a concentration of 1 - 2 µg/ml. Detects a band of approximately 200 kDa (predicted molecular weight: 222 kDa). |
| IHC-P | | Use at an assay dependent concentration. |

ターゲット情報

関連性

TEM4 (Tumor endothelial marker 4) is a Rho-specific GEF (guanine-nucleotide exchange factor) with novel structural and regulatory properties and predominant expression in the heart. Rho GTPases, which are activated by specific GEFs, play pivotal roles in several cellular functions. TEM4, encoding a protein containing 1510 amino acids, contains a RhoGEF-specific Dbl homology (DH) domain but lacks their typical pleckstrin homology domain. TEM4 couples tyrosine kinase signals with the activation of the rho/rac GTPases, thus leading to cell differentiation and/or proliferation. Elevated levels of TEM4, TEM5, TEM6, TEM7 and TEM7R were also raised in breast cancer tissues. TEM4 could also prove to be useful as a target, therapeutically.

画像



Lane 1 : Anti-TEM4 antibody (ab67278) at 1 µg/ml

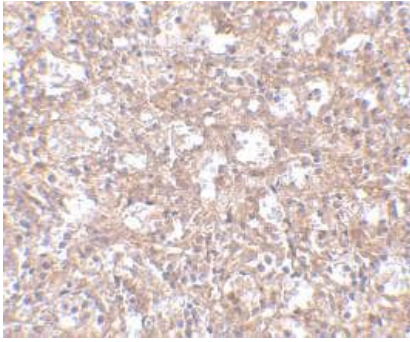
Lane 2 : Anti-TEM4 antibody (ab67278) at 2 µg/ml

All lanes : Jurkat cell lysate

Lysates/proteins at 15 µg per lane.

Predicted band size: 222 kDa

Observed band size: 200 kDa



ab67278 at 2.5 µg/ml staining of TEM4 in human spleen tissue using IHC-P.

Immunohistochemistry (Formalin/PFA-fixed paraffin-embedded sections) - Anti-TEM4 antibody (ab67278)

Please note: All products are "FOR RESEARCH USE ONLY. NOT FOR USE IN DIAGNOSTIC PROCEDURES"

Our Abpromise to you: Quality guaranteed and expert technical support

- Replacement or refund for products not performing as stated on the datasheet
- Valid for 12 months from date of delivery
- Response to your inquiry within 24 hours
- We provide support in Chinese, English, French, German, Japanese and Spanish
- Extensive multi-media technical resources to help you
- We investigate all quality concerns to ensure our products perform to the highest standards

If the product does not perform as described on this datasheet, we will offer a refund or replacement. For full details of the Abpromise, please visit <https://www.abcam.co.jp/abpromise> or contact our technical team.

Terms and conditions

- Guarantee only valid for products bought direct from Abcam or one of our authorized distributors