

# Anti-TELO2 antibody ab122722

**3 References** [画像数 3](#)

### 製品の概要

製品名	Anti-TELO2 antibody
製品の詳細	Rabbit polyclonal to TELO2
由来種	Rabbit
アプリケーション	<b>適用あり:</b> IHC-P, WB, ICC/IF
種交差性	<b>交差種:</b> Human
免疫原	Recombinant Protein Epitope Signature Tag antigen, corresponding to amino acids 361 - 462 of Human TELO2 (Q9Y4R8).
ポジティブ・コントロール	Human urinary bladder tissue RT-4, U-251 MG and Human tonsil lysate Human cell line U-251 MG
特記事項	<p>The Life Science industry has been in the grips of a reproducibility crisis for a number of years. Abcam is leading the way in addressing this with our range of recombinant monoclonal antibodies and knockout edited cell lines for gold-standard validation. Please check that this product meets your needs before purchasing.</p> <p>If you have any questions, special requirements or concerns, please send us an inquiry and/or contact our Support team ahead of purchase. Recommended alternatives for this product can be found below, along with publications, customer reviews and Q&amp;As</p>

### 製品の特性

製品の状態	Liquid
保存方法	Shipped at 4°C. Upon delivery aliquot and store at -20°C. Avoid freeze / thaw cycles.
バッファー	pH: 7.20 Preservative: 0.02% Sodium azide Constituents: 59% PBS, 40% Glycerol (glycerin, glycerine)
精製度	Immunogen affinity purified
ポリ/モノ	ポリクローナル
アイソタイプ	IgG

### アプリケーション

## The Abpromise guarantee

**Abpromise保証は、次のテスト済みアプリケーションにおけるab122722の使用に適用されます**

アプリケーションノートには、推奨の開始希釈率がありますが、適切な希釈率につきましてはご検討ください。

アプリケーション	Abreviews	特記事項
IHC-P		1/50 - 1/200. Perform heat mediated antigen retrieval with citrate buffer pH 6 before commencing with IHC staining protocol.
WB		Use a concentration of 0.04 - 0.4 µg/ml.
ICC/IF		Use a concentration of 0.25 - 2 µg/ml.

## ターゲット情報

### 機能

May be involved in telomere length regulation. Promotes assembly, stabilizes and maintains the activity of mTORC1 and mTORC2 complexes, which regulate cell growth and survival in response to nutrient and hormonal signals.

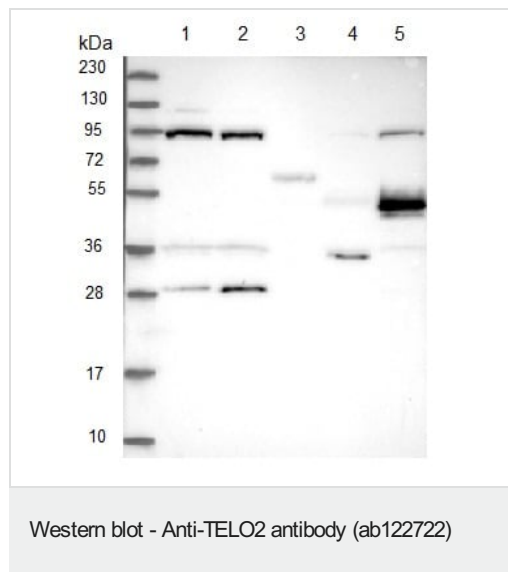
### 配列類似性

Belongs to the TEL2 family.

### 細胞内局在

Cytoplasm. Membrane. Nucleus. Chromosome > telomere.

## 画像



**All lanes :** Anti-TELO2 antibody (ab122722) at 1/250 dilution

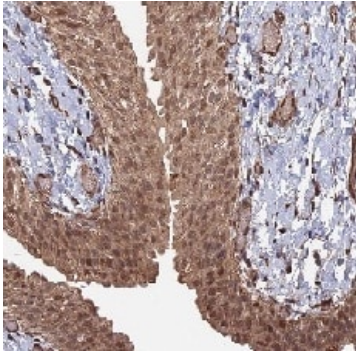
**Lane 1 :** RT-4

**Lane 2 :** U-251 MG

**Lane 3 :** Human plasma

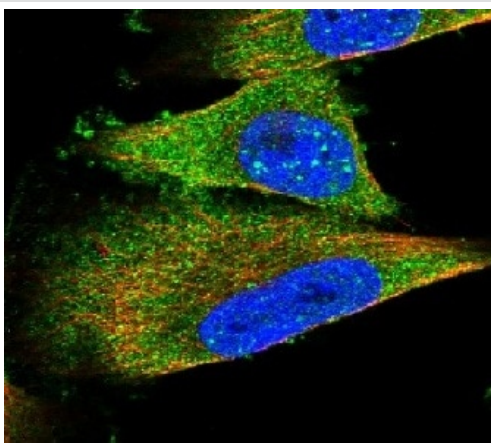
**Lane 4 :** Human liver lysate

**Lane 5 :** Human tonsil lysate



Immunohistochemistry (Formalin/PFA-fixed paraffin-embedded sections) - Anti-TELO2 antibody (ab122722)

ab122722, at 1/50 dilution, staining TELO2 in paraffin-embedded Human urinary bladder tissue by Immunohistochemistry.



Immunocytochemistry/ Immunofluorescence - Anti-TELO2 antibody (ab122722)

ab122722, at 4 ug/ml, staining TELO2 in Human cell line U-251 MG by Immunofluorescence.

**Please note:** All products are "FOR RESEARCH USE ONLY. NOT FOR USE IN DIAGNOSTIC PROCEDURES"

### Our Abpromise to you: Quality guaranteed and expert technical support

- Replacement or refund for products not performing as stated on the datasheet
- Valid for 12 months from date of delivery
- Response to your inquiry within 24 hours
- We provide support in Chinese, English, French, German, Japanese and Spanish
- Extensive multi-media technical resources to help you
- We investigate all quality concerns to ensure our products perform to the highest standards

If the product does not perform as described on this datasheet, we will offer a refund or replacement. For full details of the Abpromise, please visit <https://www.abcam.co.jp/abpromise> or contact our technical team.

### Terms and conditions

- Guarantee only valid for products bought direct from Abcam or one of our authorized distributors