


### Anti-TEA domain family member 2/ETF antibody ab92279

[4 References](#) [画像数 2](#)

#### 製品の概要

製品名	Anti-TEA domain family member 2/ETF antibody
製品の詳細	Goat polyclonal to TEA domain family member 2/ETF
由来種	Goat
特異性	Not expected to cross-react with other TEA domain family proteins.
アプリケーション	適用あり: WB
種交差性	交差種: Human 交差が予測される動物種: Mouse, Rat, Dog 
免疫原	Synthetic peptide corresponding to Human TEA domain family member 2/ETF aa 238-249 (internal sequence). Sequence: C-EPPDAVDSYQRH

Database link: [NP\\_003589.1](#)

 [Run BLAST with](#)

 [Run BLAST with](#)

ポジティブ・コントロール Human ileum tissue lysate

**特記事項**  
The Life Science industry has been in the grips of a reproducibility crisis for a number of years. Abcam is leading the way in addressing this with our range of recombinant monoclonal antibodies and knockout edited cell lines for gold-standard validation. Please check that this product meets your needs before purchasing.

If you have any questions, special requirements or concerns, please send us an inquiry and/or contact our Support team ahead of purchase. Recommended alternatives for this product can be found below, along with publications, customer reviews and Q&As

#### 製品の特性

製品の状態	Liquid
保存方法	Shipped at 4°C. Upon delivery aliquot and store at -20°C or -80°C. Avoid repeated freeze / thaw cycles.
バッファー	pH: 7.30 Preservative: 0.02% Sodium azide Constituents: Tris buffered saline, 0.5% BSA

精製度	Immunogen affinity purified
特記事項(精製)	Purified from Goat serum by ammonium sulphate precipitation followed by antigen affinity chromatography using the immunizing peptide.
ポリモノ	ポリクローナル
アイソタイプ	IgG

## アプリケーション

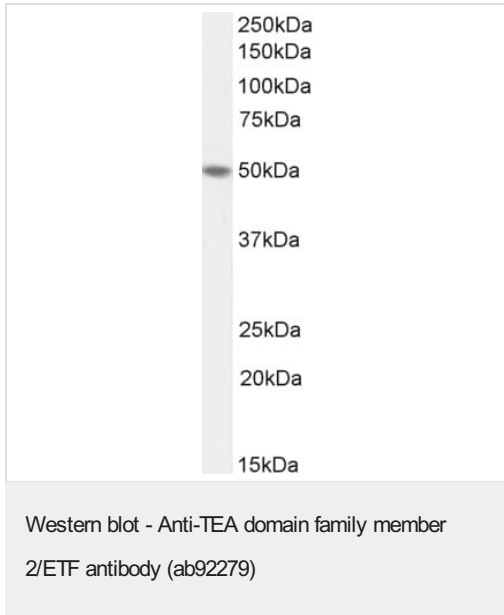
**The Abpromise guarantee** Abpromise保証は、次のテスト済みアプリケーションにおけるab92279の使用に適用されず  
 アプリケーションノートには、推奨の開始希釈率がありますが、適切な希釈率につきましてはご検討ください。

アプリケーション	Abreviews	特記事項
WB		Use a concentration of 1 - 3 µg/ml. Detects a band of approximately 50 kDa (predicted molecular weight: 49 kDa). 1 hour primary incubation is recommended for this product.

## ターゲット情報

機能	Transcription factor which plays a key role in the Hippo signaling pathway, a pathway involved in organ size control and tumor suppression by restricting proliferation and promoting apoptosis. The core of this pathway is composed of a kinase cascade wherein MST1/MST2, in complex with its regulatory protein SAV1, phosphorylates and activates LATS1/2 in complex with its regulatory protein MOB1, which in turn phosphorylates and inactivates YAP1 oncoprotein and WWTR1/TAZ. Acts by mediating gene expression of YAP1 and WWTR1/TAZ, thereby regulating cell proliferation, migration and epithelial mesenchymal transition (EMT) induction. Binds to the SPH and GT-IIC 'enhancers' (5'-GTGGAATGT-3'). May be involved in the gene regulation of neural development. Binds to the M-CAT motif.
配列類似性	Contains 1 TEA DNA-binding domain.
細胞内局在	Nucleus.

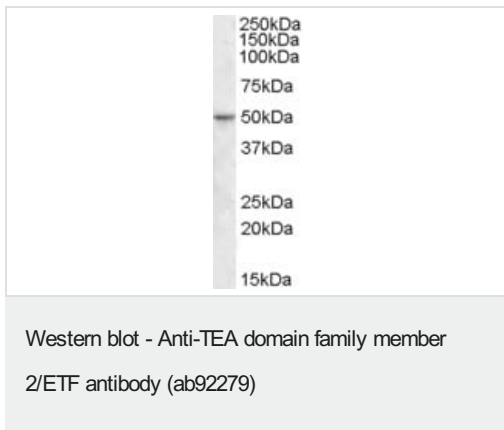
## 画像



Anti-TEA domain family member 2/ETF antibody (ab92279) at 1 µg/ml + Human colon lysate (35µg protein in RIPA buffer)

**Predicted band size:** 49 kDa

Detected by chemiluminescence.



Anti-TEA domain family member 2/ETF antibody (ab92279) at 1 µg/ml + Human ileum lysate in RIPA buffer at 35 µg

Developed using the ECL technique.

**Predicted band size:** 49 kDa

**Observed band size:** 50 kDa

**Please note:** All products are "FOR RESEARCH USE ONLY. NOT FOR USE IN DIAGNOSTIC PROCEDURES"

### Our Abpromise to you: Quality guaranteed and expert technical support

- Replacement or refund for products not performing as stated on the datasheet
- Valid for 12 months from date of delivery
- Response to your inquiry within 24 hours
- We provide support in Chinese, English, French, German, Japanese and Spanish
- Extensive multi-media technical resources to help you
- We investigate all quality concerns to ensure our products perform to the highest standards

If the product does not perform as described on this datasheet, we will offer a refund or replacement. For full details of the Abpromise, please visit <https://www.abcam.co.jp/abpromise> or contact our technical team.

### Terms and conditions

- Guarantee only valid for products bought direct from Abcam or one of our authorized distributors